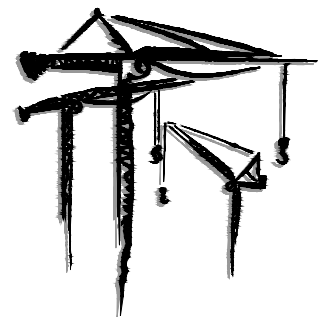


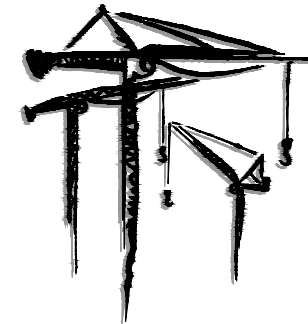
• Tower Crane • Hoist • Mobile •
Rentals and Sales



LEWIS
CRANE & HOIST

2214 HWY. 1187 BLDG. 1
Mansfield, TX76063
817-225-1090

"Your Turnkey Crane and Hoist Provider"



LEWIS
CRANE & HOIST

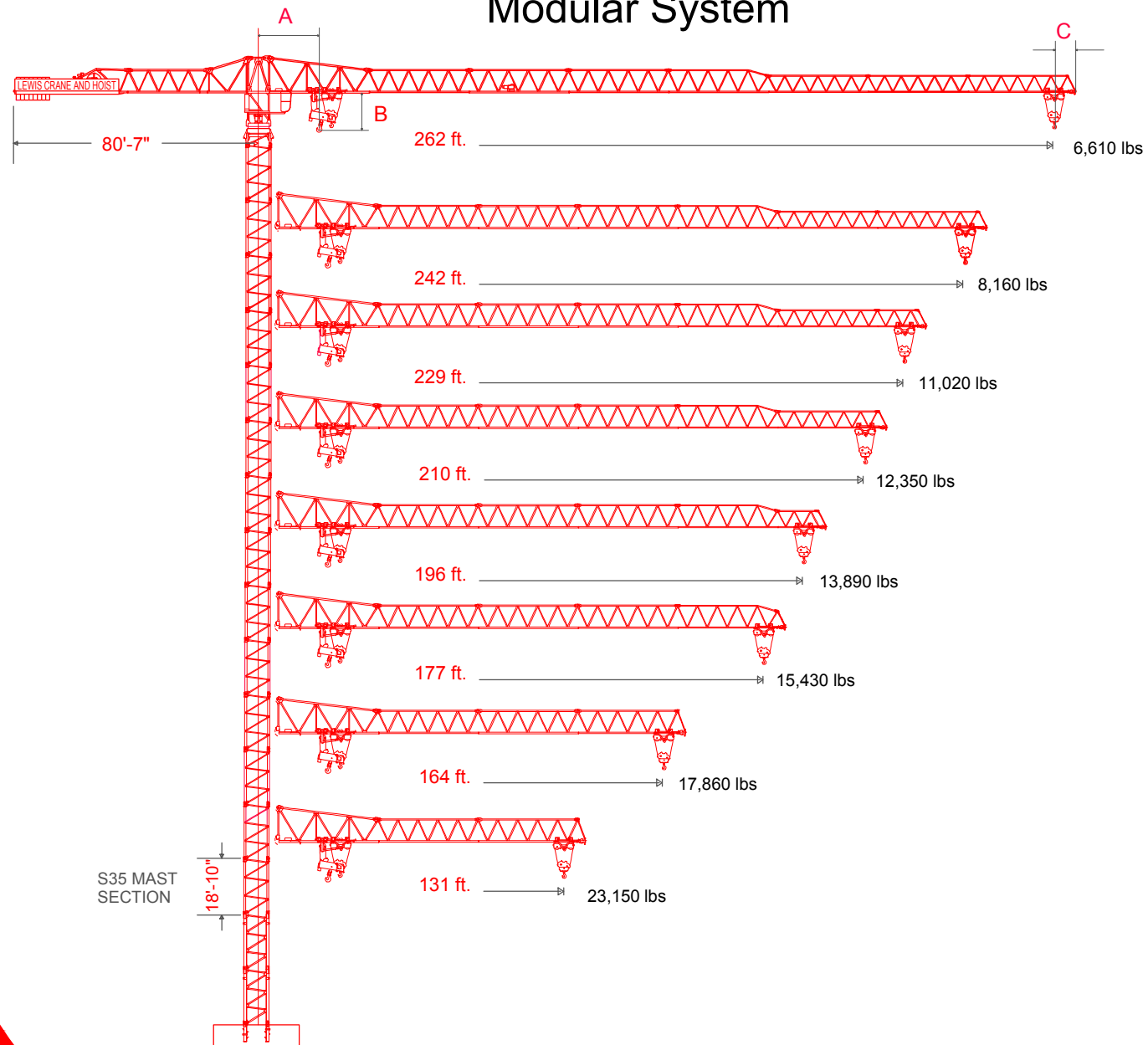
LINDEN  COMANSA

COMANSA LC400
Topless Tower Crane





Topless Tower Crane
Modular System



A =Centerline crane to minimum 2 part hook radius 8'-6"
 B =Bottom of jib to hook block 6'-7"
 C =Add for jib tip radius 2'-11"

Line Speeds and Power Requirements

Power Requirements

87 hp (65 kW)

2 - Part Line	Line Speed	Capacity
19,850 lbs 9t	131.2 ft/min 40 m/min	19,850 lbs 9t
	328 ft/min 99 m/min	6,610 lbs 3.3t
	459 ft/min 139 m/min	4,410 lbs 2.2t

4 - Part Line	Line Speed	Capacity
39,690 lbs 18t	66 ft/min 20 m/min	39,690 lbs 18t
	164 ft/min 49 m/min	13,225 lbs 6.6t
	229 ft/min 69 m/min	8,820 lbs 4.4t

Unit	Horsepower	Kilowatts	Speed
Trolley	10	7.5	0 - 226.4 ft/min 0 - 69 m/min
Swing	2 x 107ft-lb	2 x 145 Nm	0 - 0.8 rpm
Traveling	6 x 4.6	6 x 3.4	52.5 - 105 ft/min 16 - 32 m/min

Power Requirements

480 volts, 3 phase, 60 Hz, 300 amp service

Additional Equipment and Services Available

- Moritsch Tower Cranes
- Comedil Tower Cranes
- Peiner Tower Cranes
- Sun Tower Cranes
- Comansa Tower Cranes
- Timberland Derricks
- Hardrock Elevators
- Hercules Elevators
- Specialized Rigging
- Technical Services
- Third Party Inspections
- Parts and Repair Services
- Erection and Dismantlement Services

*Due to product improvement specifications are subject to change without notice.

EQUIPMENT RENTALS - SALES- 24 HOUR SERVICE - YARD STORAGE & TRANSFERS - REGIONAL SERVICE

2214 FM 1187, SUITE 1
 MANSFIELD, TX 76063

OFFICE: 817-225-1090 FAX: 817-225-1095

WWW.LEWISCRANEANDHOIST.COM

DESCRIPTION	DIMENSION L x W x H	WEIGHT
Mast Section D33	8'7" x 8'7" x 19'2" 2.6m x 2.6m x 5.8m	9,570 lbs 4,340 kg
Mast Section S35	8'7" x 8'7" x 18'10" 2.6m x 2.6m x 5.7m	8,160 lbs 3,701 kg
Mast Section TD33A	8'7" x 8'7" x 18'10" 2.6m x 2.6m x 5.7m	8,160 lbs 3,701 kg
Telescoping Cage J4.1 w/platform	9'11" x 10'9" x 30'8" 6.2m x 4.4m x 5.7m	28,660 lbs 3,160 kg
Turntable Complete SM218/S35	10'0" x 10'0" x 10'3" 3.0m x 3.0m x 3.1m	19,620 lbs 8,899 kg
Cathead SM218	8'2" x 5'2" x 22'0" 2.4m x 1.5m x 3.1m	11,025 lbs 5,000 kg
Counter - weight deck BM215	EFU4-65-45 37'10" x 7'2" x 8'5" 11.5m x 2.1m x 2.5m	24,691 lbs 11,199 kg
Counter Jib Complete Fm215 Fm218	40'3" x 7'2" x 12'1" 12.2m x 2.1m x 2.5m	11,360 lbs 5,152 kg
Hook Block TALC09+GA09	6'3" x 5'4" x 4'6" 1.9m x 1.3m x 1.3m	1,190 lbs 539 kg
Anchors PD3-2	1'6" x 1'6" x 6'10" .4m x .4m x 2.1m	2,440 lbs 1,106 kg
Jib Section 1 AM298	34'1" x 4'7" x 12'1" 10.3m x 1.4m x 3.6m	12,120 lbs 5,524 kg
Jib Section 2 AM282A	33'10" x 4'7" x 8'1" 10.3m x 1.4m x 2.4m	10,690 lbs 4,848 kg
Jib Section 3 AM272A	33'9" x 4'7" x 7'10" 10.3m x 1.4m x 2.4m	9,480 lbs 4,300 kg
Jib Section 4 AM262A	33'8" x 4'7" x 7'10" 10.2m x 1.4m x 2.4m	7,930 lbs 3,596 kg

DESCRIPTION	DIMENSION L x W x H	WEIGHT
Jib Section 5 AM250A	33'7" x 4'7" x 7'9" 10.2m x 1.4m x 2.74m	5,090 lbs 2,308 kg
Jib Section 6 AM240	33'7" x 4'7" x 5'9" 10.2m x 1.4m x 1.7m	3,770 lbs 1,710 kg
Jib Section 7 Am230	33'6" x 4'7" x 5'7" 10.2m x 1.4m x 1.7m	2,890 lbs 1,310 kg
Jib Section 9 Am220	33'1" x 4'7" x 5'7" 10.0m x 1.4m x 1.7m	2,050 lbs 929 kg
Jib Tip Section With Jib End 8 Am244	13'8" x 4'7" x 5'8" 4.1m x 1.4m x 1.7m	870 lbs 394 kg
Counter weights A B C		A- 8,818 lb B- 4,409 lb C- 2,204 lb
262.4 ft. Jib Assembly (80M) 1 2 3 4 5 6 7 9	262' x 4'7" x 12'1" 80m x 1.4m x 3.6m	54,280 lbs 24,620 kg
242.7ft. Jib Assembly (73.7M) 1 2 3 4 5 6 7 8	242' x 4'7" x 12'1" 73.7m x 1.4m x 3.6m	52,840 lbs 23,967 kg
229.6 ft. Jib Assembly (69.7M) 1 2 3 4 5 6 7	229' x 4'7" x 12'1" 69.7m x 1.4m x 3.6m	51,970 lbs 23,573 kg
209.9 ft. Jib Assembly (63.9M) 1 2 3 4 5 6 8	209' x 4'7" x 12'1" 63.9m x 1.4m x 3.6m	49,950 lbs 22,656 kg
196.8 ft. Jib Assembly (59.9M) 1 2 3 4 5 6	196' x 4'7" x 12'1" 59.9m x 1.4m x 3.6m	49,080 lbs 22,622 kg
177.1 ft. Jib Assembly (53.9M) 1 2 3 4 5 8	177' x 4'7" x 12'1" 53.9m x 1.4m x 3.6m	46,180 lbs 20,946 kg
164.0 ft. Jib Assembly (49.9M) 1 2 3 4 5	164' x 4'7" x 12'1" 49.9m x 1.4m x 3.6m	45,310 lbs 20,552 kg
131.2 ft. Jib Assembly (39.9M) 1 2 3 4	131' x 4'7" x 12'1" 39.9m x 1.4m x 3.6m	40,220 lbs 18,243 kg

NOTE: Weights and dimension are approximate. Weigh components before lifting.

- Jib assembly doesn't include trolley, pulley support and load block.
- Counter-Jib include hoist winch, handrails, platforms and tie bars
- Turntable complete does not include platform and operator cabin
- Cathead includes cabin, rails, platform, and ladder
- Telescope cage does not include platform and ladder
- Counter-weight deck includes wire-rope

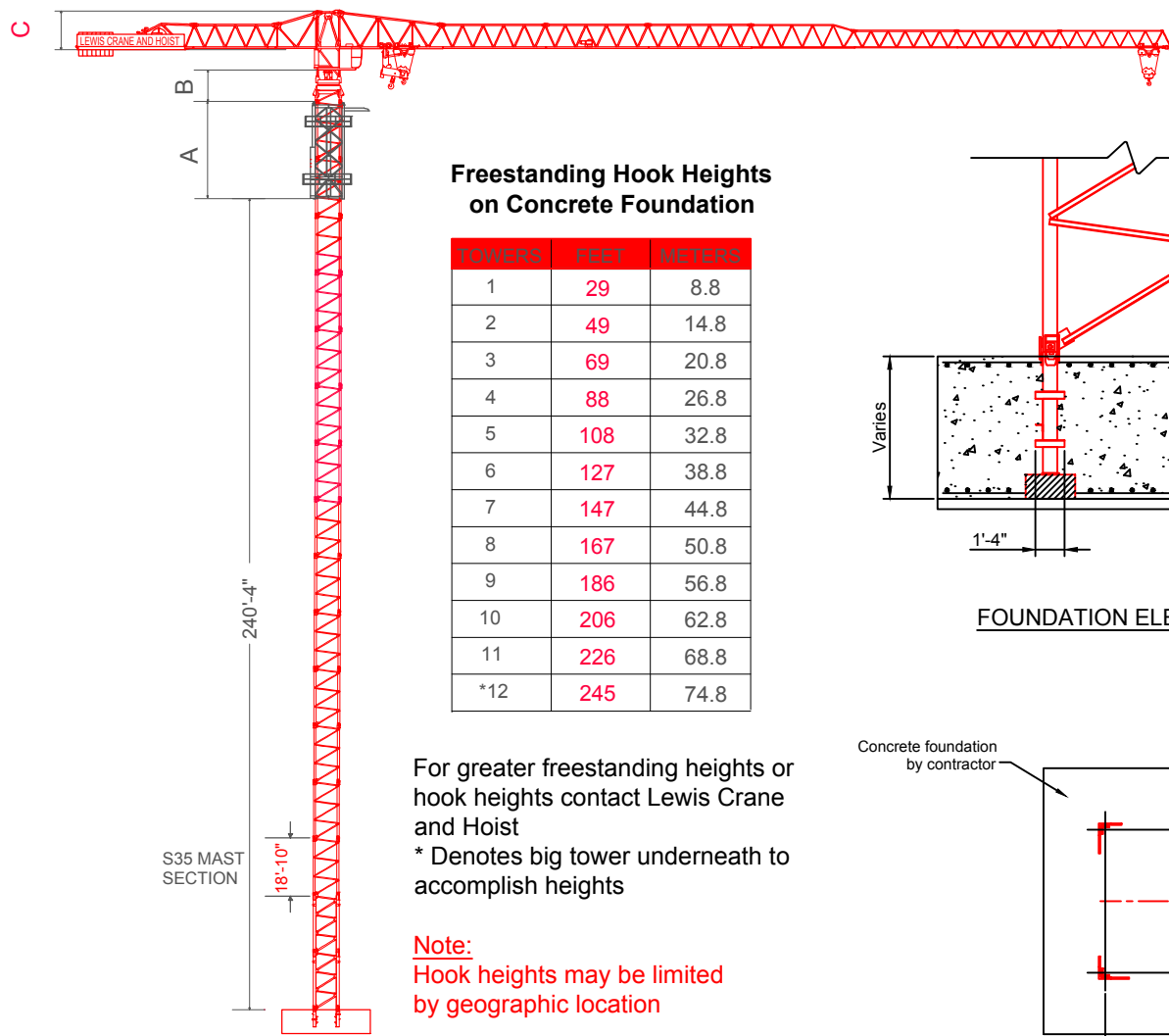
Radius and capacity (meter and tons)		2-Part - line										ft
Hook Radius		111	131	144	164	177	196	210	229	242	262	
262FT	19,840 lbs - 98'- 0"	17,580	14,680	13,190	11,430	10,470	9,280	8,600	7,740	7,260	6,614	
242FT	19,840 lbs - 108'- 0"	19,560	16,350	14,710	13,050	11,700	10,380	9,640	8,690	8,157		
229FT	19,840 lbs - 134'- 0"	19,840	19,840	18,440	16,030	14,720	13,100	12,190	11,023			
210FT	19,840 lbs - 134'- 0"	19,840	19,840	18,670	16,220	14,910	13,270	12,346				
196FT	19,840 lbs - 141'- 0"	19,840	19,840	19,510	17,350	15,590	13,889					
177FT	19,840 lbs - 137'- 0"	19,840	19,840	19,300	17,160	15,432						
164FT	19,840 lbs - 147'- 0"	19,840	19,840	19,840	18,254							
131FT	19,840 lbs - 131'- 0"	19,840	19,840									

Radius and capacity (meter and tons)		4-Part - line										ft
Hook Radius		101	134	142	161	174	194	207	227	240	262	
262FT	39,670 lbs - 52'- 0"	19,180	13,635	12,478	10,769	9,722	8,411	7,680	6,746	6,217	5,512	
242FT	39,670 lbs - 59'- 0"	21,208	15,157	13,889	12,026	10,880	9,458	8,664	7,639	7,055		
229FT	39,670 lbs - 68'- 0"	26,411	19,059	17,516	15,256	13,856	12,125	11,150				
210FT	39,670 lbs - 69'- 0"	26,576	19,191	17,637	15,355	13,955	12,213	11,243				
196FT	39,670 lbs - 72'- 0"	27,613	19,985	18,386	16,027	14,583	12,787					
177FT	39,670 lbs - 72'- 0"	27,172	19,654	18,078	15,752	14,330						
164FT	39,670 lbs - 75'- 0"	28,781	20,856	19,202	16,755							
131FT	39,670 lbs - 78'- 0"	30,401										

Radius and capacity (meter and tons)		2-Part - line										m
Hook Radius		34	40	44	50	54	60	64	70	74	80	
80m	9t - 30.0m	7.9	6.6	5.3	4.7	4.2	4.2	3.9	3.5	3.2	3.0	
74m	9t - 32.9m	8.8	7.4	6.8	5.9	5.3	4.7	4.3	3.9	3.7		
70m	9t - 40.9m	9.0	9.0	8.3	7.2	6.6	5.9	5.5	5.0			
64m	9t - 40.9m	9.0	9.0	8.4	7.3	6.7	6.0	5.6				
60m	9t - 42.9m	9.0	9.0	8.8	7.7	7.0	6.3					
54m	9t - 42.0m	9.0	9.0	8.7	7.6	7.0						
50m	9t - 44.9m	9.0	9.0	9.0	8.1							
40m	9t - 40.0m	9.0	9.0									

Radius and capacity (meter and tons)		4-Part - line										m
Hook Radius		34	40	44	50	54	60	64	70	74	80	
80m	18t - 16m	7.7	6.5	5.8	4.8	4.4	3.8	3.4	3.5	2.8	2.5	
74m	18t - 18m	8.6	7.2	6.4	5.4	4.9	4.2	3.9	3.4	3.2		
70m	18t - 21m	9.0	9.0	8.1	6.9	6.2	5.4	5.0	4.5			
64m	18t - 21m	10.8	9.1	8.2	6.0	6.3	5.5	5.0				
60m	18t - 22m	11.2	9.5	8.5	7.2	6.6	5.8					
54m	18t - 22m	11.8	9.3	8.4	7.1	6.4						
50m	18t - 23m	11.8	9.3	8.9	7.5							
40m	18t - 23.9m	12.4	10.4									

Hook Heights / Freestanding



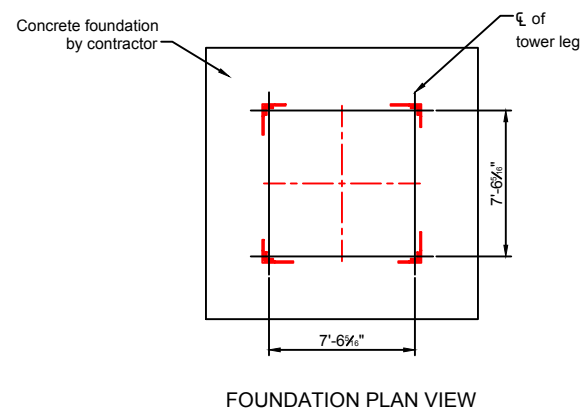
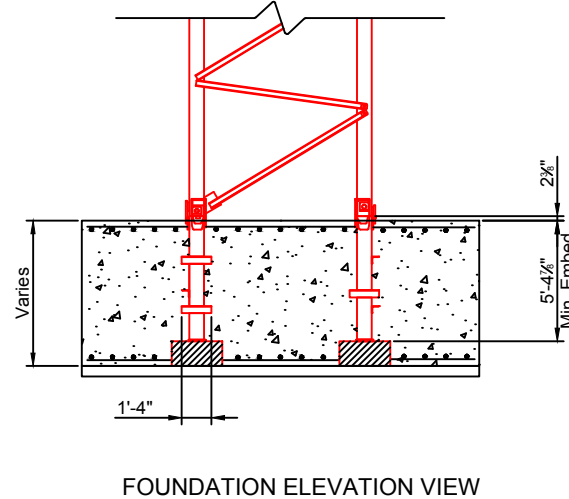
Freestanding Hook Heights on Concrete Foundation

TOWERS	FEET	METERS
1	29	8.8
2	49	14.8
3	69	20.8
4	88	26.8
5	108	32.8
6	127	38.8
7	147	44.8
8	167	50.8
9	186	56.8
10	206	62.8
11	226	68.8
*12	245	74.8

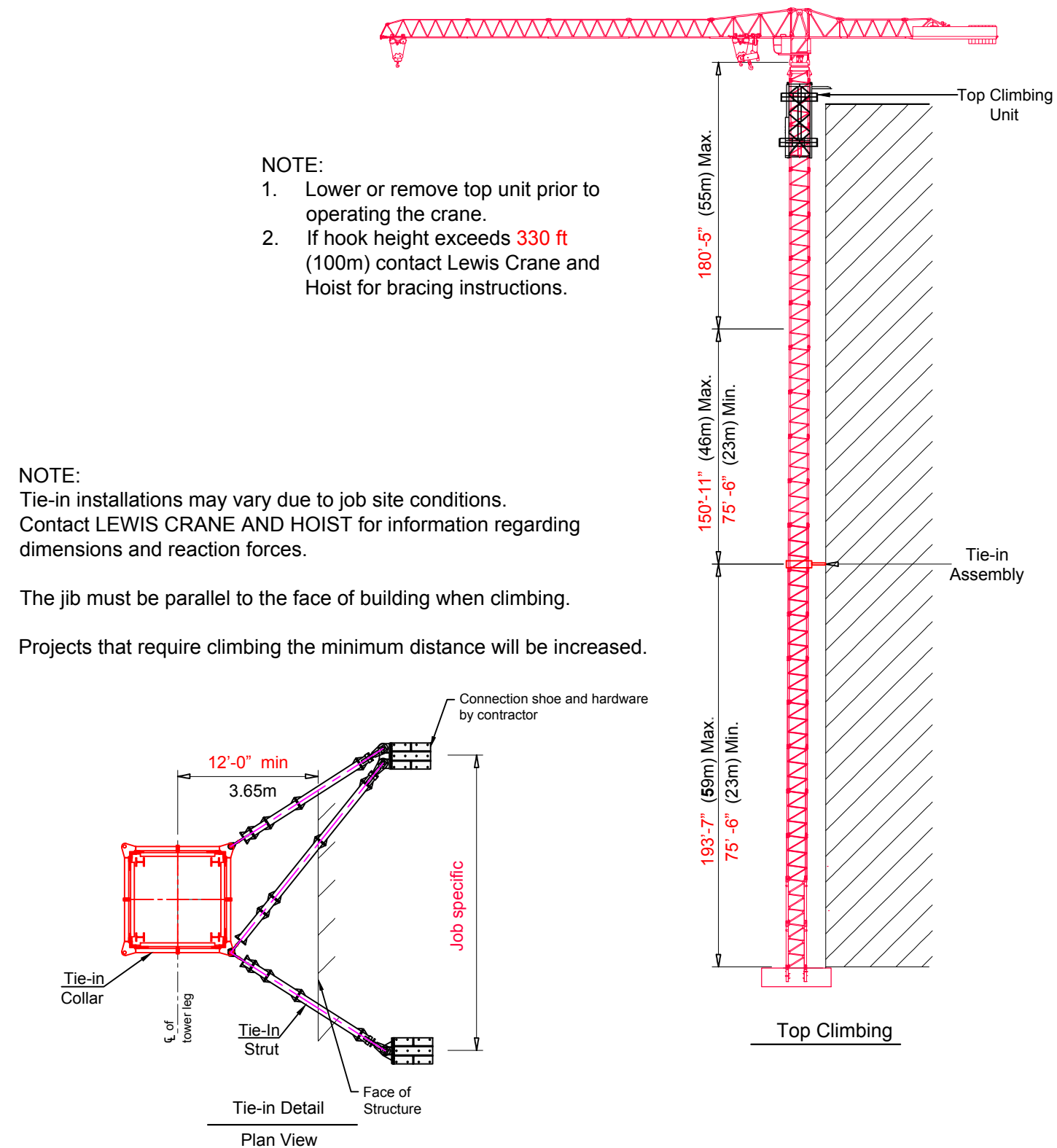
For greater freestanding heights or hook heights contact Lewis Crane and Hoist
 * Denotes big tower underneath to accomplish heights

Note:
 Hook heights may be limited by geographic location

A = Height of telescoping unit 30'-8" (9.3m)
 B = Height of complete slewing unit 10'-3" (3.12m)
 C = Height of jib section 12'-6" (3.8m)



Climbing / Tie - in Assembly



- NOTE:
1. Lower or remove top unit prior to operating the crane.
 2. If hook height exceeds 330 ft (100m) contact Lewis Crane and Hoist for bracing instructions.

NOTE:
 Tie-in installations may vary due to job site conditions.
 Contact LEWIS CRANE AND HOIST for information regarding dimensions and reaction forces.

The jib must be parallel to the face of building when climbing.
 Projects that require climbing the minimum distance will be increased.