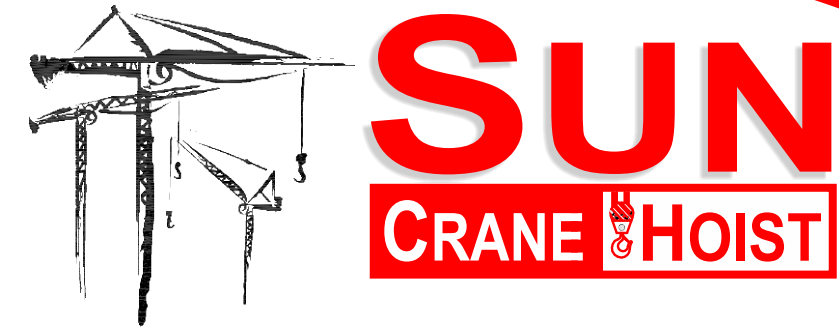


COMEDIL CTT331-16



Turnkey Solutions * Parts and Service * Training and Safety * Transportation



COMEDIL CTT331-16

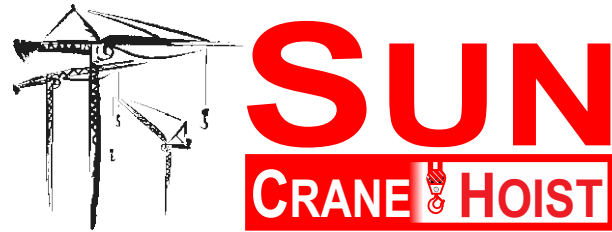
Tower Crane

Revised 05/08/2014

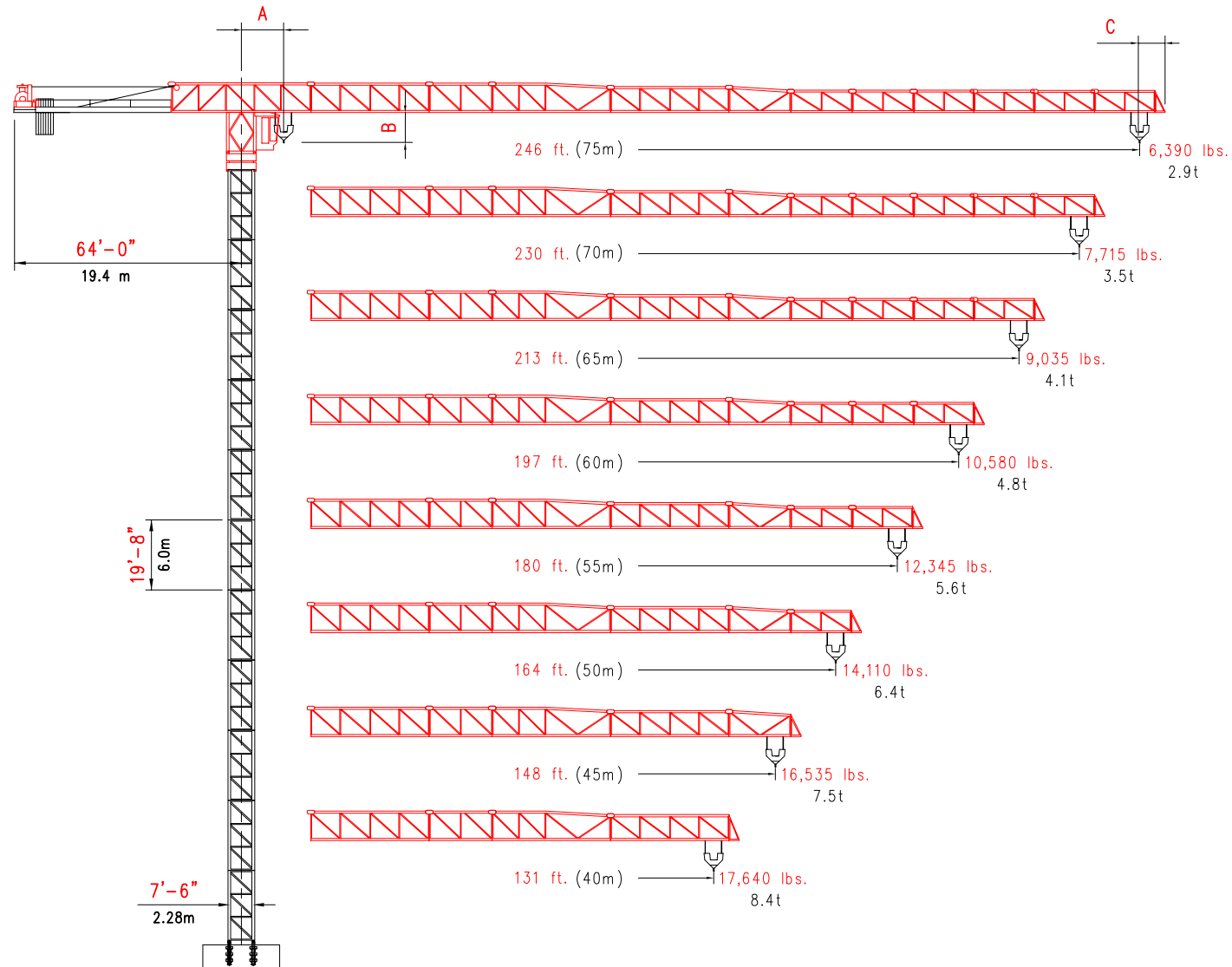


2214 Hwy 1187 - BLDG 1
Mansfield, TX. 76063
Office : 817.225.1090 * Fax : 817.225.1035
Website : www.suncraneandhoist.com





FLATTOP TOWER CRANE
MODULAR SYSTEM



- A = Centerline crane to minimum 2 part hook radius 8'-2" (2.5m)
- B = Bottom of jib to hook block 16'-2" (5.0m)
- C = Add for jib tip radius 4'-11" (1.5m)

Hoist Unit

90 hp 67 kW

2 - Part Line	Line Speed	Capacity
Gear 1	134 ft/min 41 m/min	17,840 lbs 8t
Gear 2	174 ft/min 53 m/min	13,230 lbs 6t
Gear 3	250 ft/min 76 m/min	8,820 lbs 4t
Gear 4	442 ft/min 135 m/min	4,410 lbs 2t
Gear 5	476 ft/min 145 m/min	4,079 lbs 1.9t

4 - Part Line	Line Speed	Capacity
Gear 1	67 ft/min 21 m/min	35,280 lbs 16t
Gear 2	87 ft/min 27 m/min	26,460 lbs 12t
Gear 3	125 ft/min 38 m/min	17,640 lbs 9t
Gear 4	221 ft/min 68 m/min	8,820 lbs 4t
Gear 5	238 ft/min 73 m/min	8,158 lbs 3.7t

Unit	Horsepower	Kilowatts	Speed
Luffing	14.8	11	0 - 312 ft/min 0 - 95 m/min
Swing	4 x 48	4 x 65 Nm	0.73 rpm
Traveling	4 x 59	4 x 90 Nm	39 - 79 ft/min 12 - 24 m/min

Power Requirements

480 volts, 60 cycle, 3 phase: 250 amp service

Additional Equipment and Services Available

- Peiner Tower Cranes
- Sun Tower Cranes
- Hercules Elevators
- Timberland Derricks
- Specialized Rigging
- Technical Services
- Third Party Inspections
- Parts and Repair Services
- Erection and Dismantlement Services

*Due to product improvement specifications are subject to change without notice.

EQUIPMENT RENTALS - SALES - 24 HOUR SERVICE - YARD STORAGE & TRANSFERS - NATIONWIDE SERVICE

2214 FM 1187, Suite 1
Mansfield, TX 76063
O 817.225.1090
F 817.225.1095

WWW.SUNCRANEANDHOIST.COM

Crane Component List

DESCRIPTION	DIMENSION L x W x H	WEIGHT
HD23 26.6 * Tower section	19'8" x 7'8" x 7'7" 6m x 2.34m x 2.32m	14,270 lbs 6473 kg
HD23 22.6 * Tower section	19'8" x 7'6" x 7'6" 6m x 2.28m x 2.29m	10,630 lbs 4823 kg
26 x 26 ft (8 x 8 m) Undercarriage Strut Mounting Tower Section	9'6" x 9'6" x 9'6" 2.9m x 2.9m x 2.9m	20,176 lbs 9150 kg
26 x 26 ft (8 x 8 m) Undercarriage Strut	9'6" x 9'6" x 9'6" 4.3m x 0.3m x 2.25m	4,013 lbs 1820 kg
100 HD23 33 x 33 ft (10 x 10 m) Undercarriage Strut Mounting Tower Section	9'10" x 9'10" x 9'10" 3m x 3m x 3m	22,138 lbs 10040 kg
100 HD23 33 x 33 ft (10 x 10 m) Undercarriage Strut	19' x 1' x 8'2" 5.80m x 0.30m x 2.50m	7,080 lbs 3215 kg
Counterjib "C5"	39'4" x 6'11" x 2'4" 12m x 2.10m x 0.70m	6,610 lbs 3000 kg
Cab tower section "LX" cab	6'7" x 7'7" x 11'10" 2m x 2.3m x 3.61m	4,631 lbs 2100 kg
Operator's Cabin "LX" cab	5'4" x 3'7" x 6'11" 1.63m x 1.10m x 2.1m	1,411 lbs 640 kg
Top climbing unit frontal panel	16'3" x 8'7" 4.96m x 2.62m	1,874 lbs 850 kg
Top climbing unit back panel	38'1" x 9'7" 11.61m x 2.92m	8,884 lbs 4030 kg
Top climbing unit side panel	37'8" x 8'7" 11.48m x 2.62m	4,090 lbs 1855 kg
Top climbing unit side panel	37'8" x 8'7" 11.48m x 2.62m	4,090 lbs 1855 kg
Hoisting Unit 67 kw W/O Platforms	10'10" x 6'12" x 7'9" 3.3m x 2.13m x 2.37m	7,277 lbs 3300 kg
Complete HD23 slewing unit	7'7" x 9'9" x 6'7" 2.30m x 2.96m x 2m	18,566 lbs 8420 kg
Jib Section - 14 th	39'3" x 6'4" x 8'2" 11.97m x 1.92m x 2.50m	16,979 lbs 7700 kg
Jib Section - 15 th	33'6" x 6'2" x 8'3" 10.20m x 1.87m x 2.52m	8,600 lbs 3900 kg

* Inclusive of ladders, platforms and assembly equipment

** Complete with trolley winch and various accessories

NOTE: Weights and dimensions are approximate. Weigh components before lifting.

Turntable upper weight (slewing motors incl.)	5300 kg/11,690 lbs
Turntable lower weight (slewing ring incl.)	6700 kg/14,770 lbs
Top climbing unit total weight (all included)	16000 kg/35,200 lbs
Double Hook block	937 kg/2,070 lbs
Double trolley	490 kg/1,080 lbs
Counterweight E1 type	4200 kg/9,261 lbs
Counterweight C1 type	2500 kg/5,510 lbs
Counterjib long tie bar set	2100 kg/4,620 lbs
Jib tip	210 kg/465 lbs

- Jib assembly doesn't include trolley and load block
- Hoist unit doesn't include wire rope, counterjib frame, platforms
- Long counterjib doesn't include hoist winch frame and tie bars
- Operator's cabin doesn't include platform (400 kg/880 lbs)
- Turntable complete doesn't include platform and operator cabin
- Counterjib includes handrails and platforms
- Cabin tower includes platform and ladder

Radius and Capacities

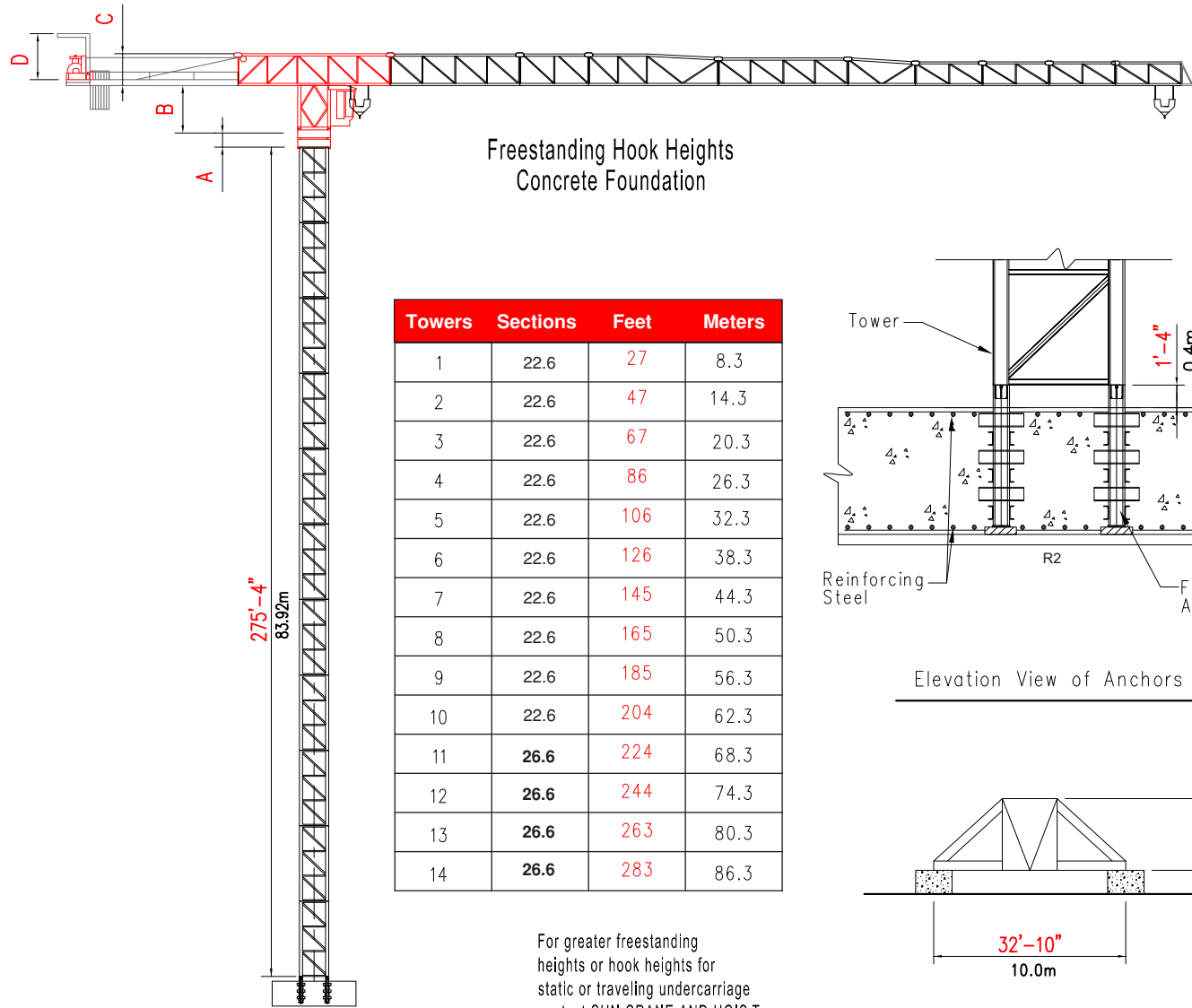
Radius and capacity (feet and pounds) 2-Part-Line														
ft														
Hook Radius	57	66	82	98	115	131	148	164	180	197	213	230	246	
246ft	17,640 lbs - 105'-0"	17,640	17,640	17,640	17,640	15,964	13,693	11,951	10,540	9,415	8,467	7,673	6,990	6,390
230ft	17,640 lbs - 113'-0"	17,640	17,640	17,640	17,640	17,331	14,906	13,031	11,532	10,319	9,305	8,445	7,715	
213ft	17,640 lbs - 119'-0"	17,640	17,640	17,640	17,640	17,640	15,810	13,847	12,282	11,003	9,944	9,035		
197ft	17,640 lbs - 125'-0"	17,640	17,640	17,640	17,640	17,640	16,736	14,663	13,031	11,686	10,580			
180ft	17,640 lbs - 131'-0"	17,640	17,640	17,640	17,640	17,640	17,640	15,479	13,759	12,345				
164ft	17,640 lbs - 134'-0"	17,640	17,640	17,640	17,640	17,640	17,640	15,876	14,110					
148ft	17,640 lbs - 139'-0"	17,640	17,640	17,640	17,640	17,640	17,640	16,535						
131ft	17,640 lbs - 131'-0"	17,640	17,640	17,640	17,640	17,640	17,640							

Radius and capacity (feet and pounds) 4-Part-Line														
ft														
Hook Radius	57	66	82	98	115	131	148	164	180	197	213	230	246	
246ft	35,280 lbs - 57'-0"	35,280	29,856	23,108	18,698	15,567	13,230	11,444	9,989	8,820	7,850	7,034	6,328	5,733
230ft	35,280 lbs - 60'-0"	35,280	31,884	24,762	20,088	16,780	14,332	12,436	10,915	9,680	8,666	7,806	7,056	
213ft	35,280 lbs - 64'-0"	35,280	34,045	26,526	21,587	18,103	15,498	13,495	11,907	10,606	9,503	8,599		
197ft	35,280 lbs - 66'-0"	35,280	35,280	27,761	22,645	19,029	16,339	14,266	12,613	11,267	10,143			
180ft	35,280 lbs - 69'-0"	35,280	35,280	29,194	23,836	20,065	17,243	15,060	13,318	11,907				
164ft	35,280 lbs - 71'-0"	35,280	35,280	29,922	24,431	20,551	17,684	15,435	13,671					
148ft	35,280 lbs - 73'-0"	35,280	35,280	31,090	25,424	21,388	18,412	16,096						
131ft	35,280 lbs - 73'-0"	35,280	35,280	31,289	25,578	21,521	18,522							

Radius and capacity (meters and tons) 2-Part-Line														
m														
Hook Radius	17.3	20	25	30	35	40	45	50	55	60	65	70	75	
8t	8t - 32.1m	8	8	8	8	7.24	6.21	5.42	4.78	4.27	3.84	3.48	3.17	2.90
8t	8t - 34.5m	8	8	8	8	7.86	6.76	5.91	5.23	4.68	4.22	3.83	3.50	
8t	8t - 36.3m	8	8	8	8	8	7.17	6.28	5.57	4.99	4.51	4.10		
8t	8t - 38.1m	8	8	8	8	8	7.59	6.65	5.91	5.30	4.80			
8t	8t - 40.0m	8	8	8	8	8	8	7.02	6.24	5.60				
8t	8t - 40.9m	8	8	8	8	8	8	7.20	6.40					
8t	8t - 42.5m	8	8	8	8	8	8	7.50						
8t	8t - 40.0m	8	8	8	8	8	8							

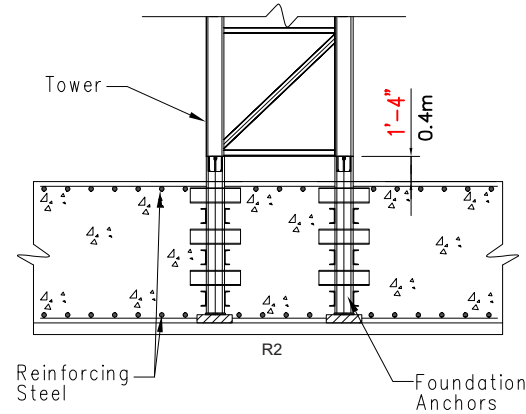
Radius and capacity (meters and tons) 4-Part-Line														
m														
Hook Radius	17.3	20	25	30	35	40	45	50	55	60	65	70	75	
16t	16t - 17.3m	16	13.54	10.48	8.48	7.06	6	5.19	4.53	4.00	3.56	3.19	2.87	2.60
16t	16t - 18.3m	16	14.46	11.23	9.11	7.61	6.50	5.64	4.95	4.39	3.93	3.54	3.20	
16t	16t - 19.4m	16	15.44	12.03	9.79	8.21	7.03	6.12	5.40	4.81	4.31	3.90		
16t	16t - 20.1m	16	16	12.59	10.27	8.63	7.41	6.47	5.72	5.11	4.60			
16t	16t - 21.1m	16	16	13.24	10.81	9.10	7.82	6.83	6.04	5.40				
16t	16t - 21.5m	16	16	13.57	11.08	9.32	8.02	7	6.20					
16t	16t - 22.3m	16	16	14.10	11.53	9.70	8.35	7.30						
16t	16t - 22.4m	16	16	14.19	11.60	9.76	8.40							

Hook Heights / Freestanding

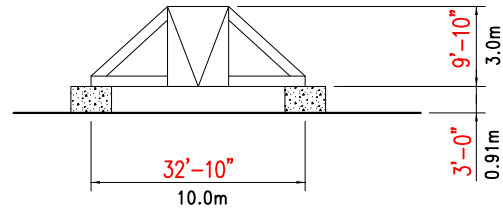


Freestanding Hook Heights
Concrete Foundation

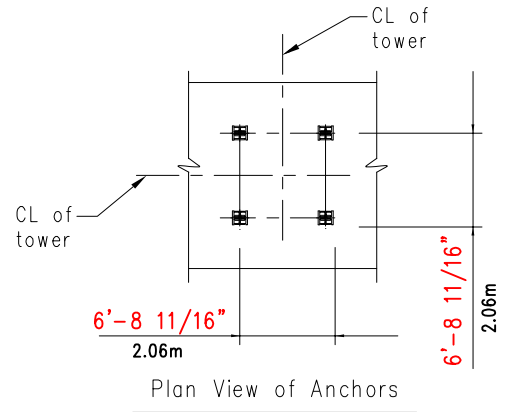
Towers	Sections	Feet	Meters
1	22.6	27	8.3
2	22.6	47	14.3
3	22.6	67	20.3
4	22.6	86	26.3
5	22.6	106	32.3
6	22.6	126	38.3
7	22.6	145	44.3
8	22.6	165	50.3
9	22.6	185	56.3
10	22.6	204	62.3
11	26.6	224	68.3
12	26.6	244	74.3
13	26.6	263	80.3
14	26.6	283	86.3



Elevation View of Anchors



Elevation View of Undercarriage



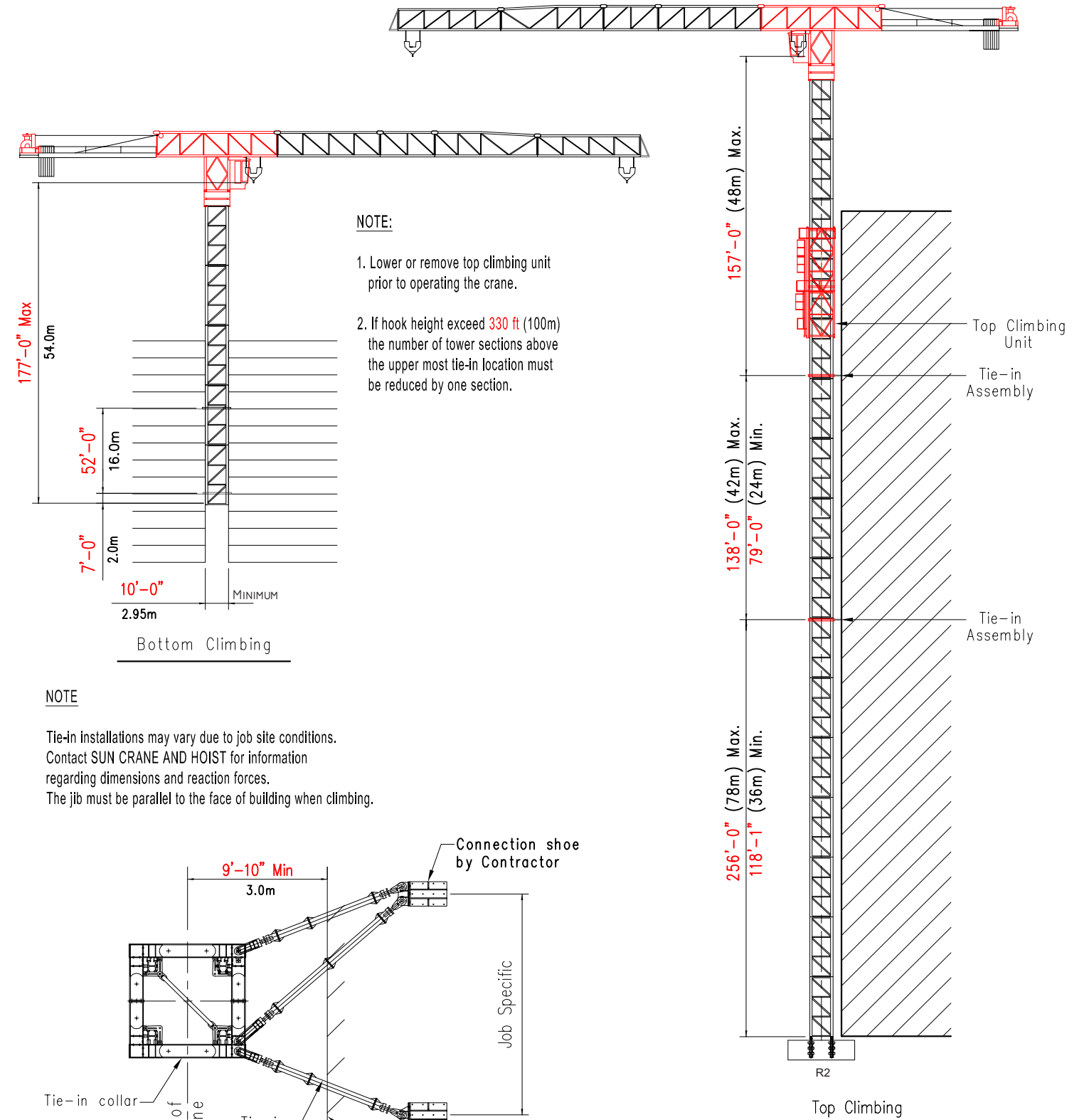
Plan View of Anchors

For greater freestanding heights or hook heights for static or traveling undercarriage contact SUN CRANE AND HOIST

Note:
Hook heights may be limited by geographic location.

- A = Height of complete slewing unit 6'-7" (2 m)
- B = Height of cab tower section 10'-0" (3.05m)
- C = Height of jib section 9'-5" (2.88m)
- D = Height of Service Derrick 12'-0" (3.6m)

Climbing / Tie-in Assembly

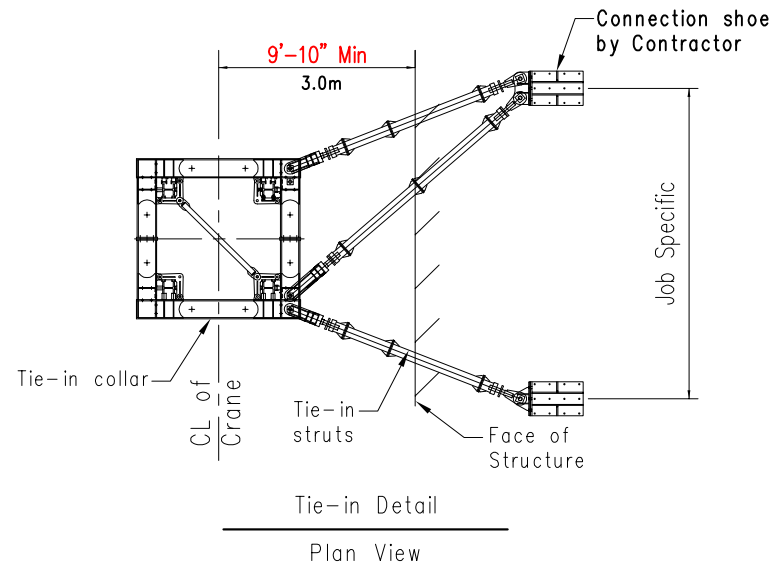


NOTE:

1. Lower or remove top climbing unit prior to operating the crane.
2. If hook height exceed 330 ft (100m) the number of tower sections above the upper most tie-in location must be reduced by one section.

NOTE

Tie-in installations may vary due to job site conditions. Contact SUN CRANE AND HOIST for information regarding dimensions and reaction forces. The jib must be parallel to the face of building when climbing.



Tie-in Detail

Plan View