

FEATURES

SAFETY FEATURES

- Electronic and mechanical door interlocks on elevator cars and ground enclosure unit
- Overload device to prevent elevator operation when rated payload has been exceeded
- Spring buffer assembly
- Low and medium speed elevators do not require counterweights
- Galvanized tower sections and tie-ins

DESIGN FEATURES

- Smooth starting and stopping without surging or jarring the elevator car
- The lifting speed can be easily controlled and is infinitely variable
- The elevator starting current is lower than the rated current
- Using the frequency conversion drive greatly reduces mechanical wear and tear on the elevator and its components
- The frequency conversion drive is more efficient and uses less power.

INSTALLATION

- For instructions regarding the erection, climbing, dismantling, operation and maintenance of the elevator car refer to the operations manual.
- This product must be operated by competent, orientated personnel and used in a safe manner to conform with the manufacturers specifications and in compliance with all federal, state standards and regulations.
- Drawings are for illustrative purposes only and do not necessarily show the exact configurations of products offered on the market at a particular time.

SUN CRANE AND HOIST Company not only owns and maintains one of the largest elevator fleets in the United States, but also exclusively offers the Hercules elevators. Hercules elevators are the newest, fastest, highest capacity of counterweightless elevators available in America.

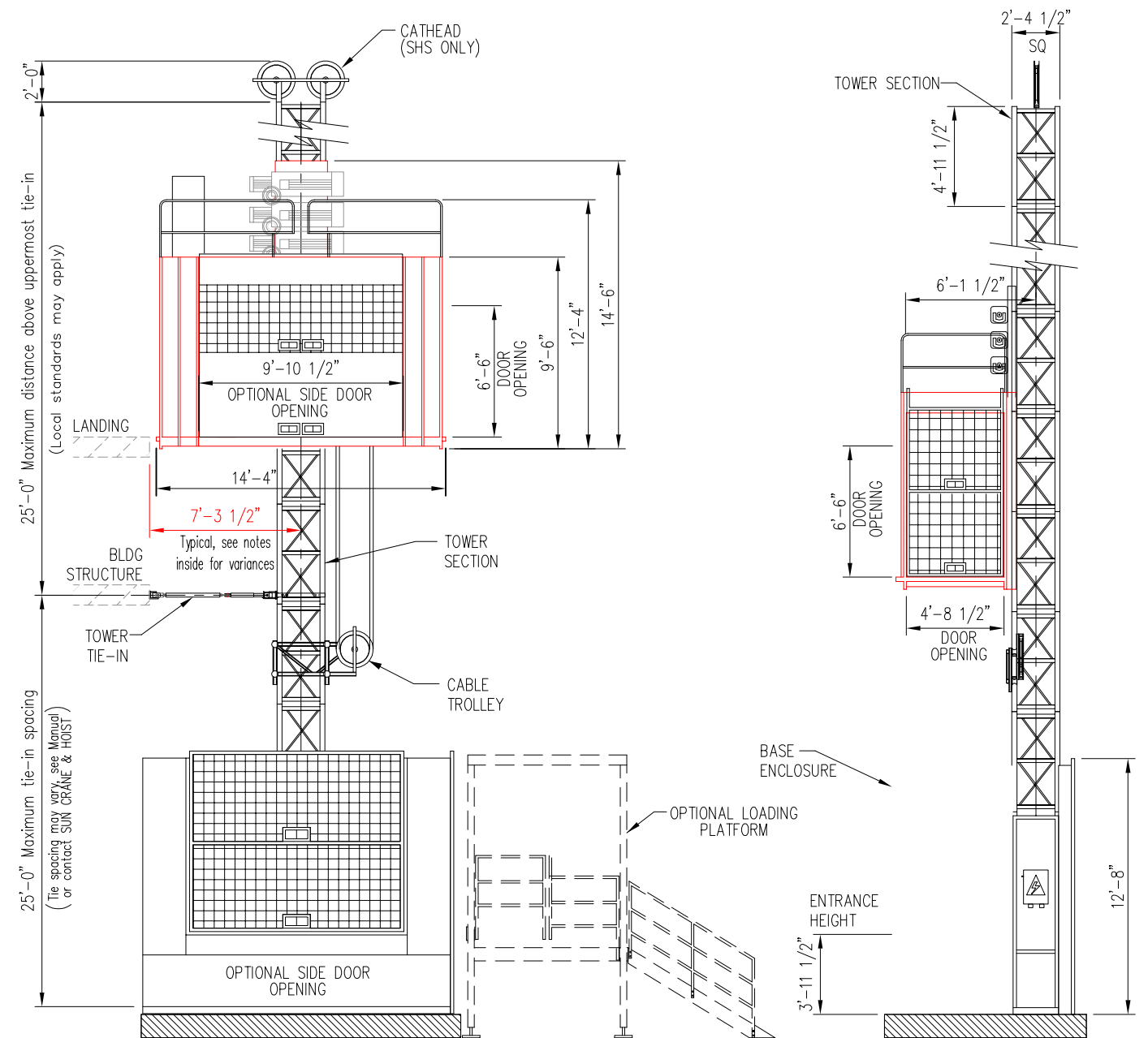
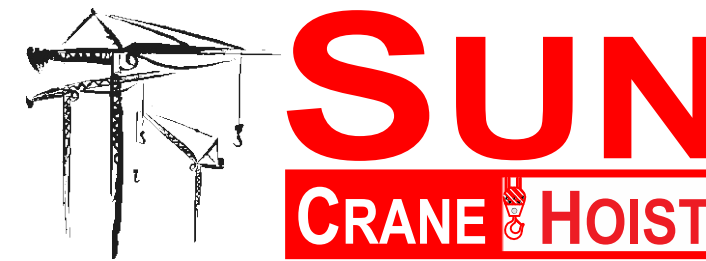
At SUN CRANE AND HOIST Company, we believe that our business is not only equipment but also service. Because of this belief, Sun Crane and Hoist Company offers services for all rigging, mechanical, electrical and engineering needs. We make it our business to ensure that the services we offer are far superior to any of our competitors because we understand that your project is only as good as the equipment used to build it.



EQUIPMENT RENTALS - SALES - 24 HOUR SERVICE - YARD STORAGE & TRANSFERS - NATIONWIDE SERVICE

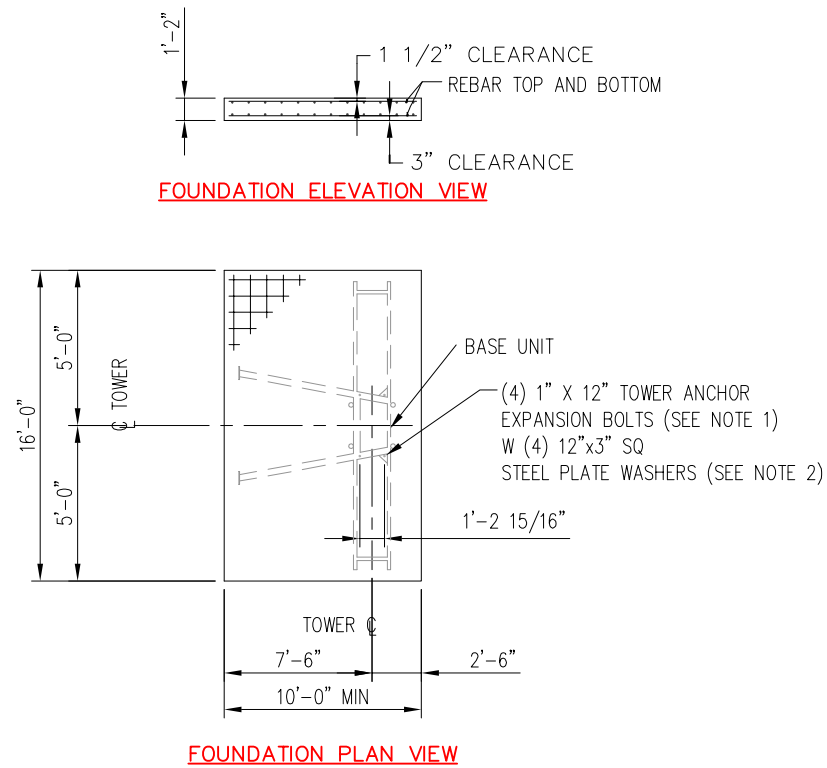
2214 FM 1187, Suite 1  
 Mansfield, TX 76063  
 O 817.225.1090  
 F 817.225.1095

WWW.SUNCRANEANDHOIST.COM



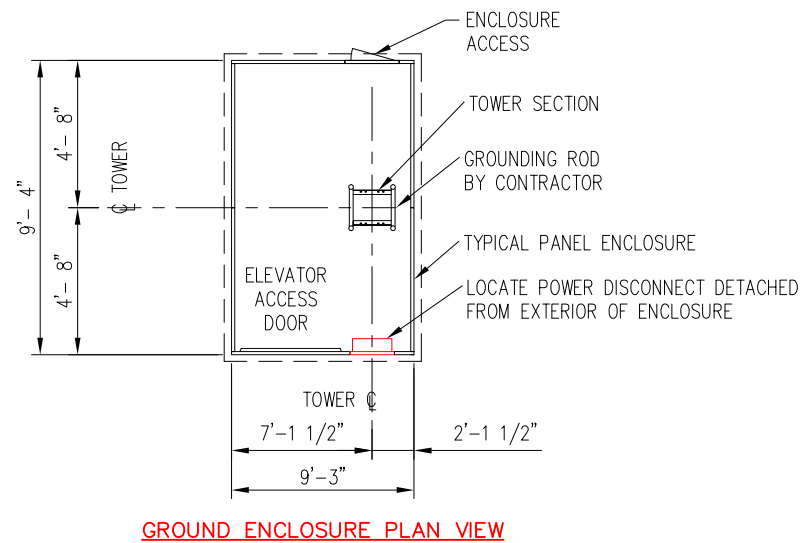
Note: Specification sheet intended for information only\*

**Foundation Details**



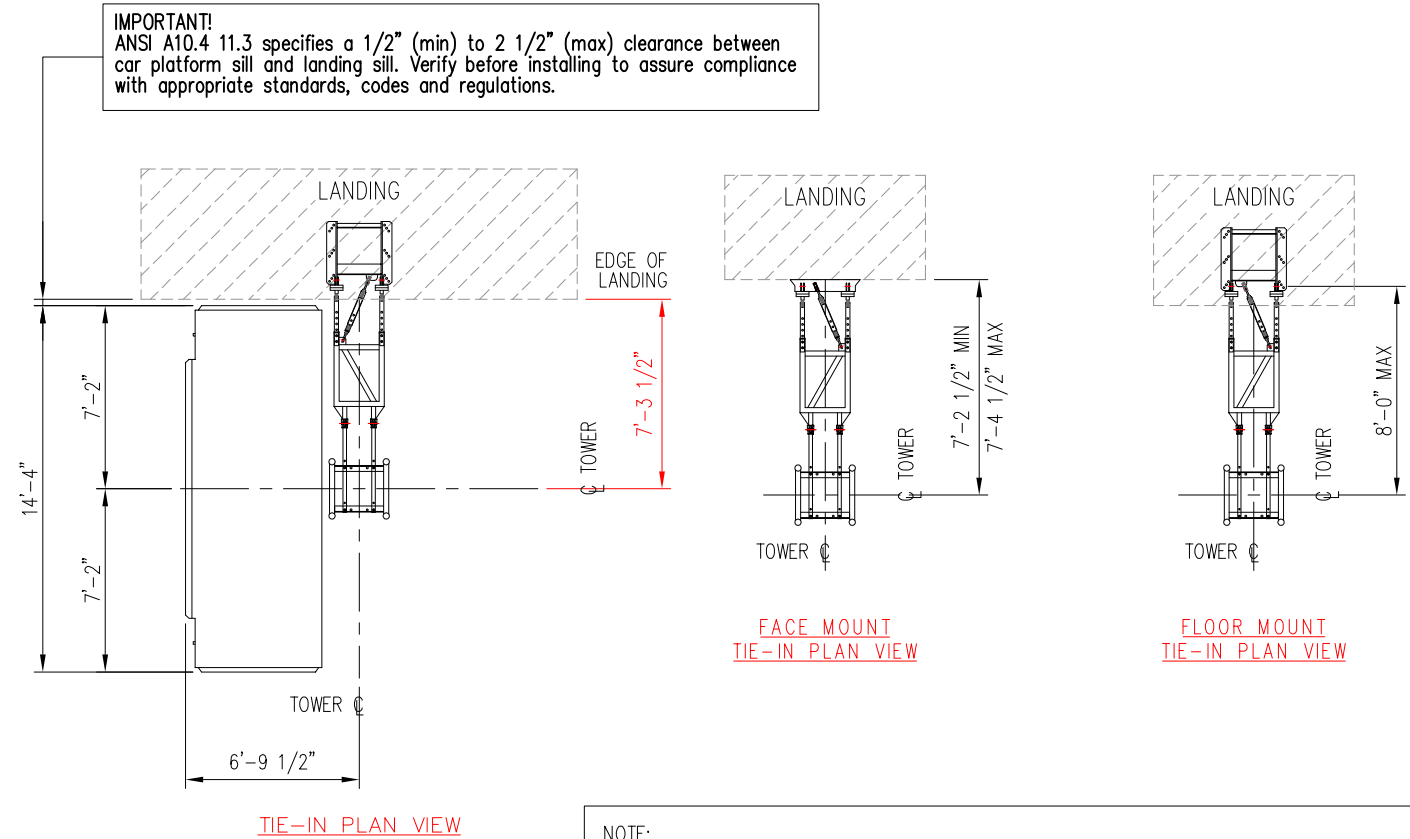
**NOTES:**

- 1" x 12" HILTI Kwik Bolt II anchor bolt or approved equal. Bolt by contractor. Install according to bolt manufacturer's requirements.
- Foundation slab: 10'-0" x 16'-0" x 1'-2" with 3,500 psi concrete.
- Reinforcing bars are #5 ASTM 615-60 10" o.c. each way, top and bottom.
- Foundation based on 490 foot mast height. For greater heights contact Sun Crane & Hoist for design.
- Foundation pad designed for a minimum soil bearing of 1,000 psf.
- Refer to manufacturers manual before installing, operating, servicing, repairing, jumping or dismantling.



Note: Specification sheet intended for information only\*

**Tie-In Details**



NOTE:  
Distances above are for a typical type 5 tie-in. Alternate anchoring methods are available. Contact SUN CRANE AND HOIST for information.

**MODEL VARIATIONS**

- F7000 DLS (WITHOUT COUNTERWEIGHT)
- F7000 DHS (WITH COUNTERWEIGHT)

**GENERAL**

- LOAD CAPACITY: 7,000 lb (PER CAR)
- INSIDE ELEVATOR CAR DIMENSIONS: 4'-10 wide x 7'-9 high x 13'-9 long
- DOOR OPENING (END): 4'-8 1/2 x 6'-6"
- OPTIONAL SIDE DOOR OPENING: 9'-10 1/2 x 6'-6"
- TOWER SECTION LENGTH: 4'-11 1/2"
- MAXIMUM TOWER HEIGHT: 490'-0" (For greater heights consult SUN CRANE AND HOIST)
- MAXIMUM TIE-IN SPACING: 25'-0"

**WEIGHTS**

- GROUND ENCLOSURE: 1,980 lb
- BASE UNIT: 1,200 lb
- ELEVATOR CAR: 7,880 lb
- COUNTERWEIGHT (DHS ONLY): 4,400 lb each
- TOWER SECTION (8 mm): 265 lb
- TIE-IN (TYPE 4): 212 lb per set

**ELECTRICAL**

- POWER REQUIREMENTS (PER CAR): 480 VOLTS - 150 AMPS - 3 PHASE - 60 HZ
- MOTORS (PER CAR): 3 x 30 HP