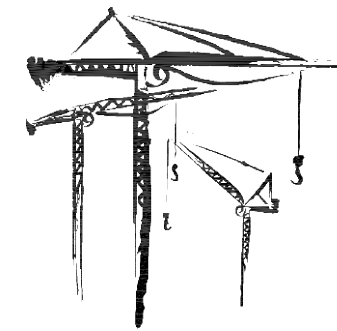




2214 Hwy 1187 - BLDG 1
Mansfield, TX. 76063
Office : 817.225.1090 * Fax : 817.225.1035
Website : www.suncraneandhoist.com

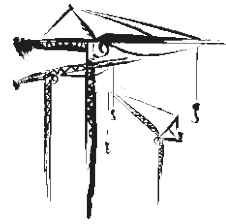
Turnkey Solutions * Parts and Service * Training and Safety * Transportation



PEINER SK405

Tower Crane
PRODUCT SPEC SHEET





SUN

CRANE & HOIST

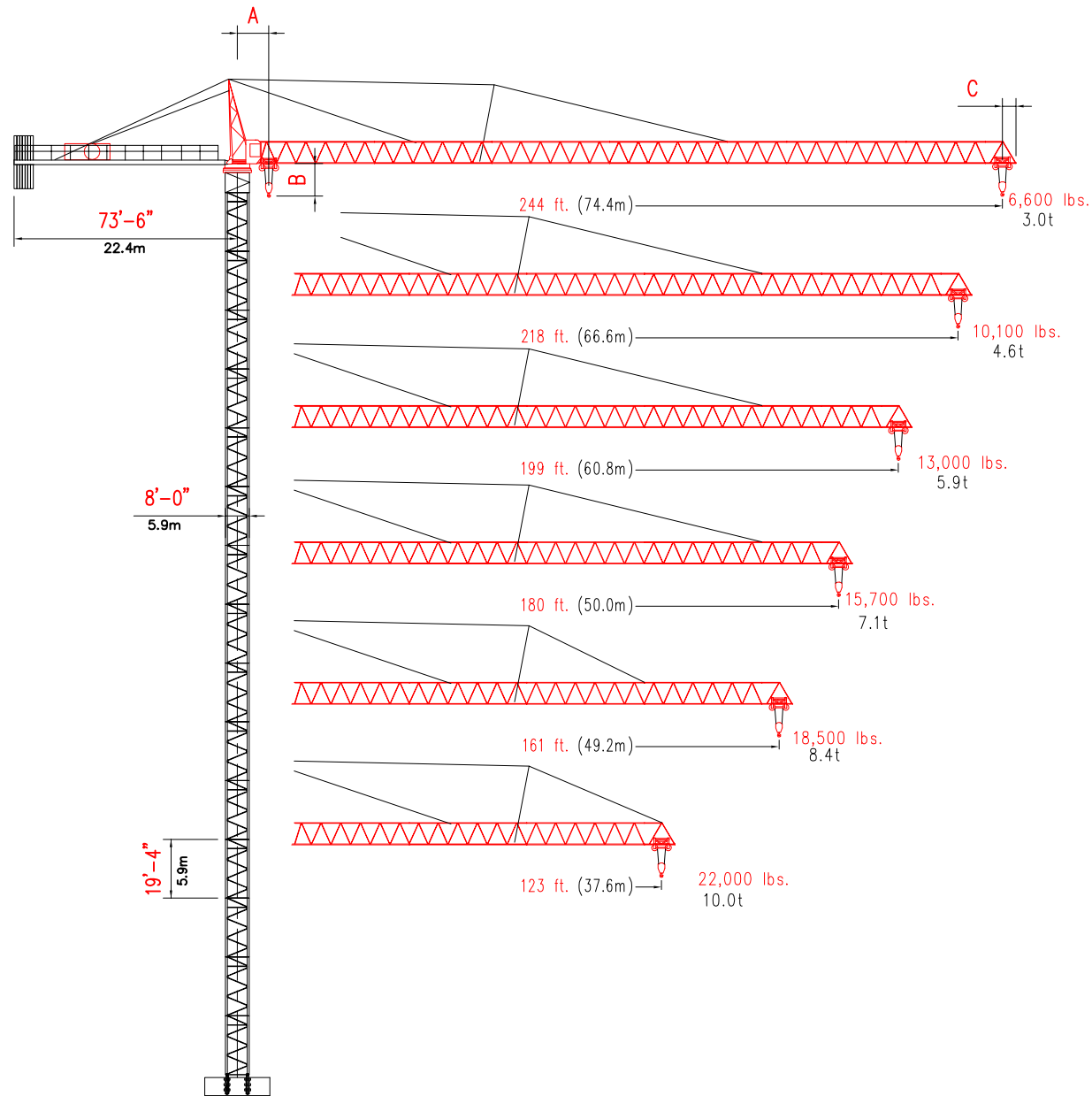
PEINER SK 405

PEINER SK 405

LINE SPEEDS AND POWER REQUIREMENTS

Hoist Unit
108 hp 79 kW

Tower Crane



- A = Centerline crane to minimum 2-part hook radius 9'-10" (3.0m)
- B = Bottom of jib to hook block 9'-10" (3.0m)
- C = Add for jib tip radius 4'-11" (1.5m) (2-Part)

2 - Part Line	Line Speed	Capacity
Gear 1	108 ft/min 34 m/min	22,000 lbs 10t
Gear 2	180 ft/min 54 m/min	15,700 lbs 7.1t
Gear 3	276 ft/min 84 m/min	9,000 lbs 4.2t
Gear 4	444 ft/min 134 m/min	5,500 lbs 2.5t

4 - Part Line	Line Speed	Capacity
Gear 1	54 ft/min 17 m/min	44,000 lbs 20t
Gear 2	90 ft/min 27 m/min	31,400 lbs 14.2t
Gear 3	138 ft/min 42 m/min	18,600 lbs 8.4t
Gear 4	222 ft/min 67 m/min	11,000 lbs 5.0t

Unit	Horsepower	Kilowatts	Speed
Trolley	15	11	0 - 312 f/min 0 - 95 m/min
Swing	4 x 8.1	4 x 80 Nm	.73 rpm
Traveling	4 x 6.5	4 x 65 Nm	39 - 79 ft/min 12 - 24 m/min

Power Requirements
480 volts, 60 cycle, 3 phase: 300 amp service

Additional Equipment and Services Available

- Peiner Tower Cranes
- Sun Tower Cranes
- Hercules Elevators
- Timberland Derricks
- Specialized Rigging
- Technical Services
- Third Party Inspections
- Parts and Repair Services
- Erection and Dismantlement Services

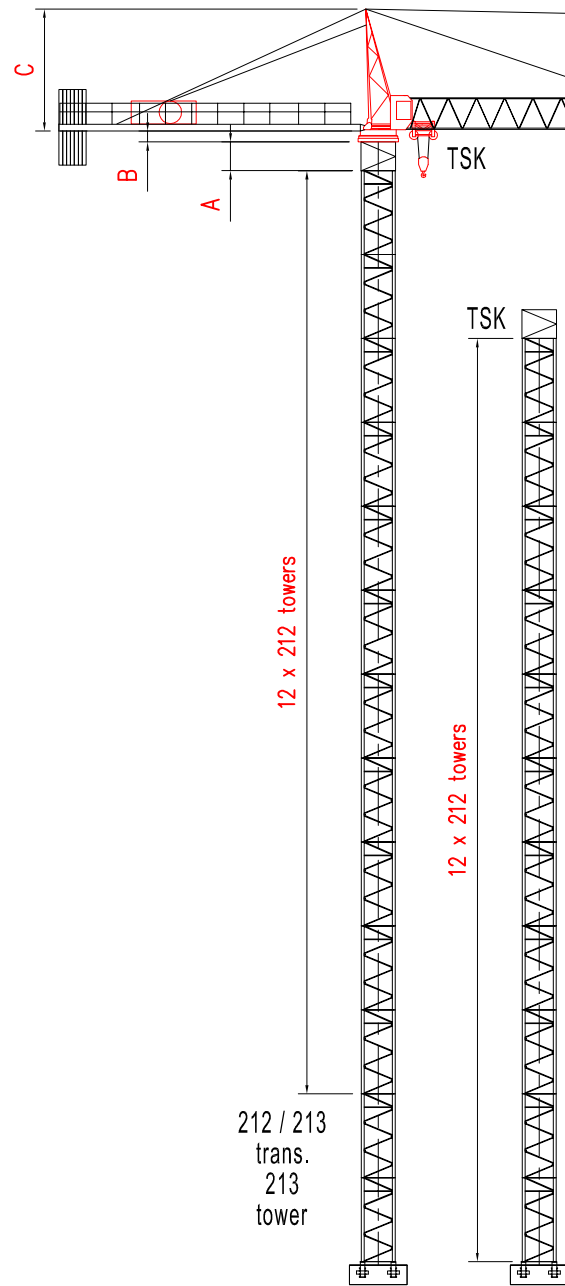
*Due to product improvement specifications are subject to change without notice.

EQUIPMENT RENTALS - SALES - 24 HOUR SERVICE - YARD STORAGE & TRANSFERS - NATIONWIDE SERVICE

2214 FM 1187, Suite 1
Mansfield, TX 76063
O 817.225.1090
F 817.225.1095

WWW.SUNCRANEANDHOIST.COM

Hook Heights / Freestanding



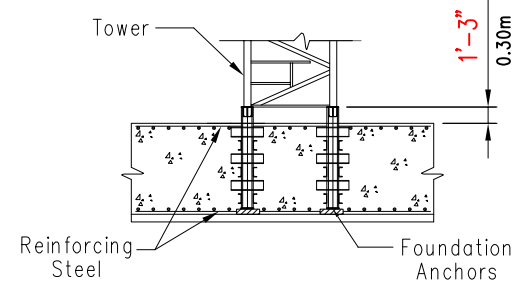
Freestanding Hook Heights
Concrete Foundation

Towers	Feet	Meters
1	25	7.4
2	44	13.3
3	63	19.2
4	82	25.1
5	102	31.0
6	121	36.9
7	140	42.8
8	160	54.6
9	179	60.5
10	199	66.4
11	218	66.4
12	237	72.3
13	256	78.2
14	273	83.1

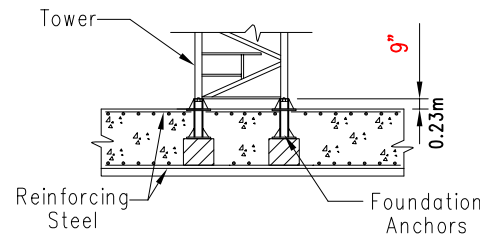
* Above hook heights include TSK tower. For greater freestanding heights contact SUN CRANE AND HOIST.

Note: Hook heights may be limited by geographic location.

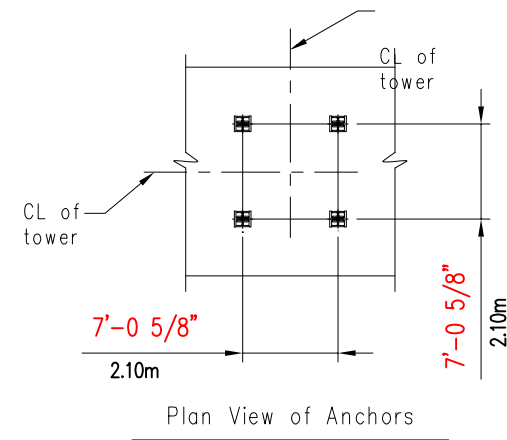
A = Height of TSK tower section 6'-8" (2.02m)
 B = Height of of complete slewing unit 4'-7" (2.3m)
 C = Height of jib section 29'-4" (8.95m)



Elevation View of 213 Anchors

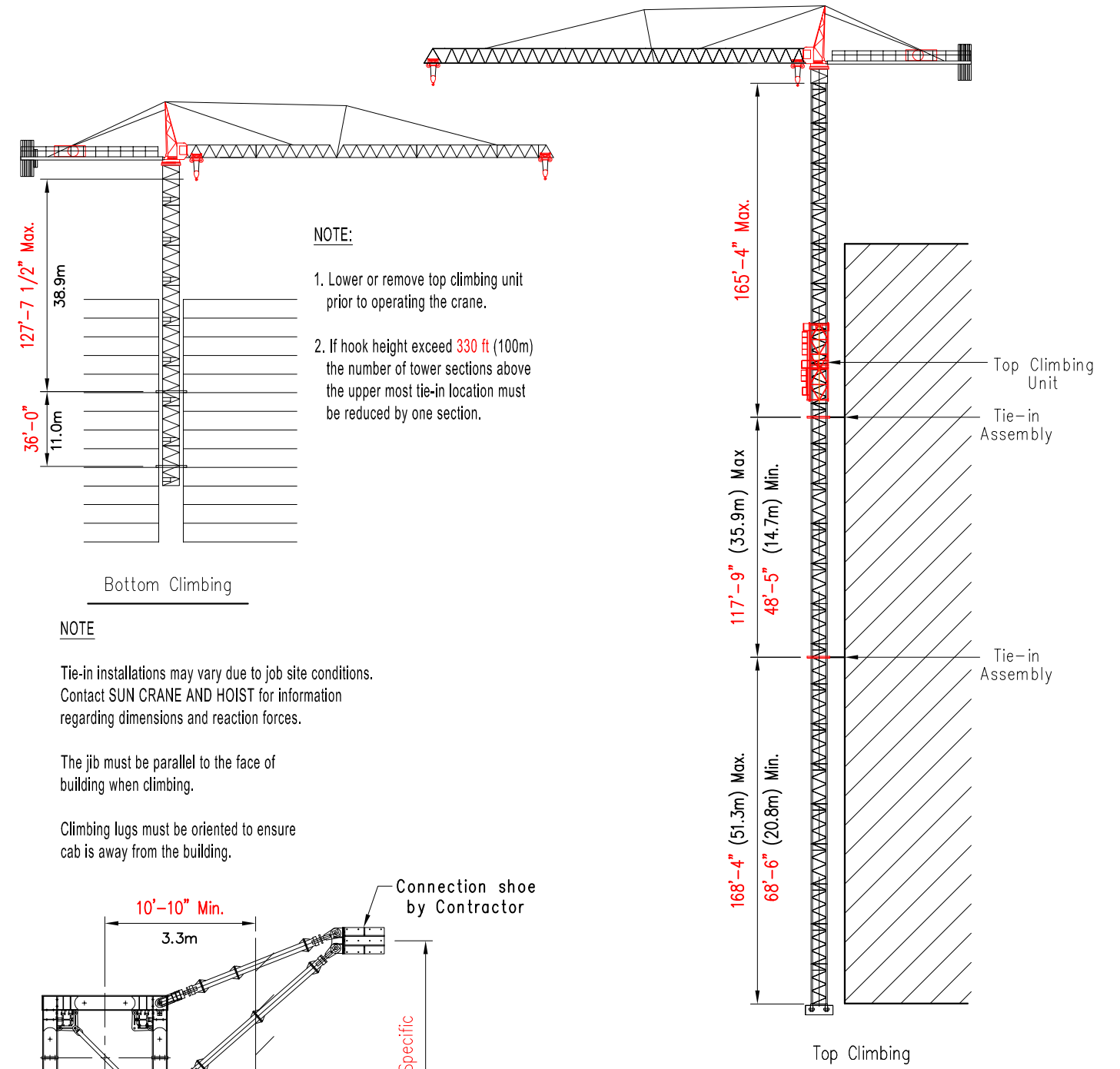


Elevation View of 212 Anchors



Plan View of Anchors

Climbing / Tie-in Assembly



NOTE:

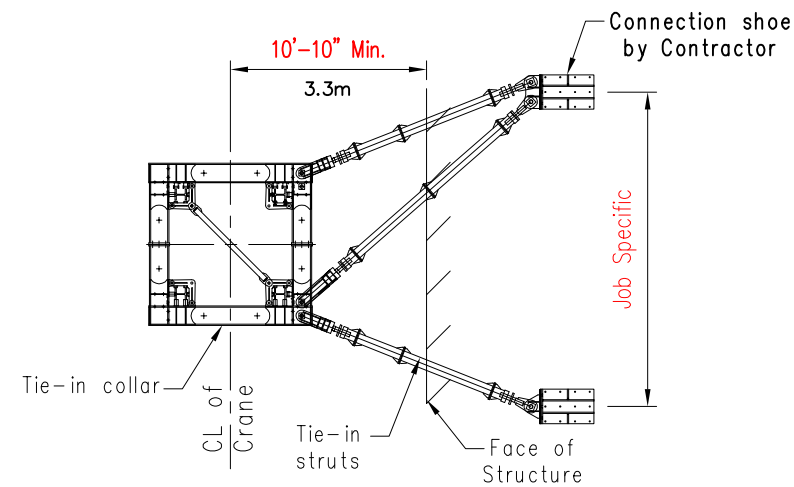
1. Lower or remove top climbing unit prior to operating the crane.
2. If hook height exceed 330 ft (100m) the number of tower sections above the upper most tie-in location must be reduced by one section.

NOTE

Tie-in installations may vary due to job site conditions. Contact SUN CRANE AND HOIST for information regarding dimensions and reaction forces.

The jib must be parallel to the face of building when climbing.

Climbing lugs must be oriented to ensure cab is away from the building.



Tie-in Detail
Plan View