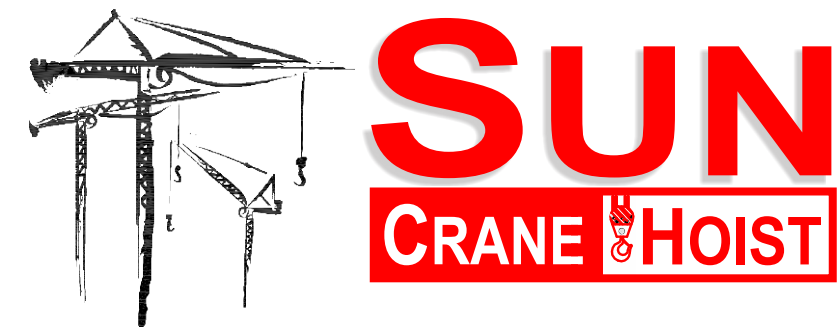




Turnkey Solutions * Parts and Service * Training and Safety * Transportation

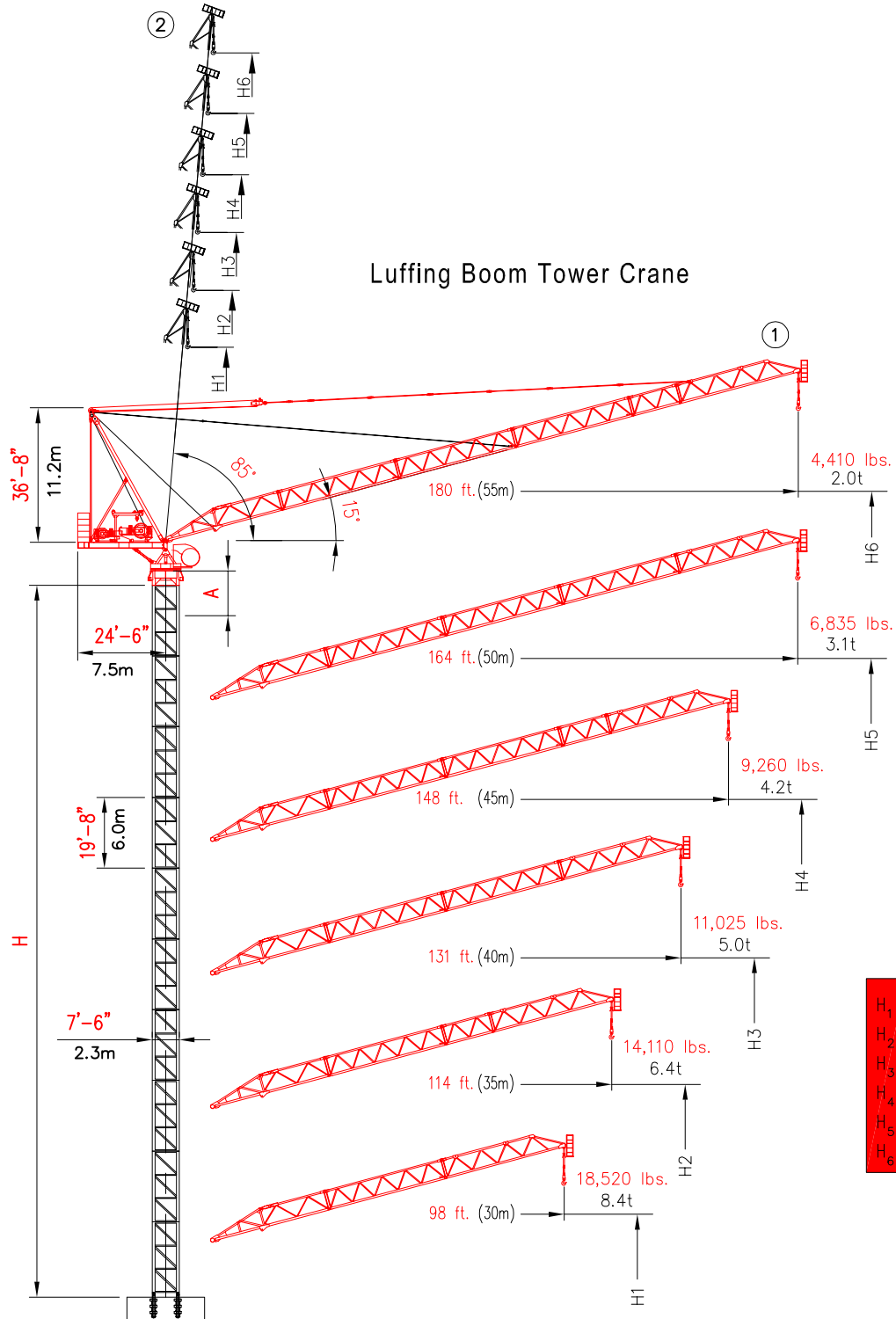


SUN STL 230-18

Luffing Boom Tower Crane

2214 Hwy 1187 - BLDG 1
Mansfield, TX. 76063
Office : 817.225.1090 * Fax : 817.225.1035
Website : www.suncraneandhoist.com

SUN STL 230-18



Luffing Boom Tower Crane

A = Bottom of jib to top of tower 12'-6" (3.8m)
 B = Maximum out of service jib angle 65°

	H	
	①	②
H ₁	H + 16.4 ft (5.0m)	H + 84.3 ft (25.7m)
H ₂	H + 20.7 ft (6.3m)	H + 101.4 ft (30.9m)
H ₃	H + 24.9 ft (7.6m)	H + 118.4 ft (36.1m)
H ₄	H + 29.5 ft (9.0m)	H + 135.5 ft (41.3m)
H ₅	H + 33.8 ft (10.3m)	H + 152.2 ft (46.4m)
H ₆	H + 38.1 ft (11.6m)	H + 169.0 ft (51.5m)

H TOWER HEIGHT
 ① MAXIMUM JIB
 ② MINIMUM JIB (IN SERVICE)

Min. Hook Radius	H1	H2	H3	H4	H5	H6
	8'-6"	9'-11"	11'-5"	12'-11"	14'-4"	15'-8"

SUN STL 230-18

LINE SPEEDS AND POWER REQUIREMENTS

Hoist Unit
 100 hp (75kW)

2 - Part Line	Line Speed	Capacity
19,850 lbs 9t	131 ft/min 40 m/min	19,842 lbs 9t
	315 ft/min 96 m/min	9,921 lbs 4.5t
	525 ft/min 160 m/min	3,086 lbs 1.4t

4 - Part Line	Line Speed	Capacity
39,683 lbs 18t	66 ft/min 20 m/min	39,690 lbs 18t
	157 ft/min 48 m/min	19,842 lbs 9t
	262 ft/min 80 m/min	6,173 lbs 2.8t

Unit	Horsepower	Kilowatts	Speed
Luffing	80	45	15'-85' 3min
Swing	2 x 6.3	2 x 4.7	0 - 0.7 rpm

Power Requirements
 480 volts, 60 cycle, 3 phase: 300 amp service

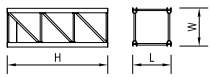
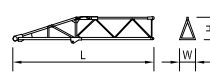
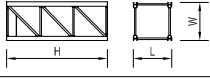
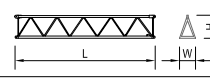

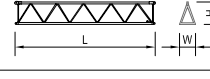

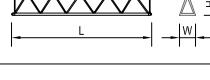
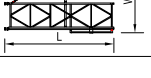
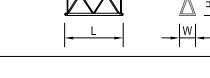
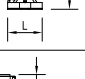
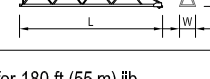
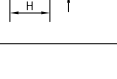

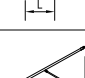
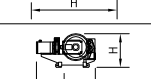
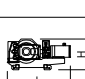


Additional Equipment and Services Available

- Peiner Tower Cranes
- Sun Tower Cranes
- Hercules Elevators
- Timberland Derricks
- Specialized Rigging
- Technical Services
- Third Party Inspections
- Parts and Repair Services
- Erection and Dismantlement Services

*Due to product improvement specifications are subject to change without notice.

EQUIPMENT RENTALS - SALES - 24 HOUR SERVICE - YARD STORAGE & TRANSFERS - NATIONWIDE SERVICE

2214 FM 1187, Suite 1
 Mansfield, TX 76063
 O 817.225.1090
 F 817.225.1095
 WWW.SUNCRANEANDHOIST.COM

DESCRIPTION	DIMENSION L x W x H	WEIGHT	DESCRIPTION	DIMENSION L x W x H	WEIGHT
Mast H205B	 7'6" x 7'6" x 19'8" 2.3m x 2.3m x 6.0m	10,170 lbs 4,853 kg	Jib Section ① 	34'6" x 5'9" x 5'8" 10.5m x 1.8m x 1.7m	3,109 lbs 1,410 kg
Mast H205A	 7'8" x 7'8" x 19'8" 2.3m x 2.3m x 6.0m	14,396 lbs 6,530 kg	Jib Section ② 	34'5" x 5'8" x 5'6" 10.5m x 1.7m x 1.7m	2,189 lbs 993 kg
Anchor Stool H205B	 6'11" x 1'11" x 1'11" 2.13m x 0.6m x 0.6m	997 lbs 452 kg	Jib Section ③ 	34'5" x 5'9" x 5'6" 10.5m x 1.7m x 1.7m	2,189 lbs 993 kg
Anchor Stool H205A	 8'4" x 2'7" x 2'7" 2.55m x 0.8m x 0.8m	1,824 lbs 827 kg	Jib Section ④ 	34'5" x 5'9" x 5'6" 10.5m x 1.7m x 1.7m	2,108 lbs 956 kg
Climbing Cage	 14'7" x 14'7" x 39'0" 4.4m x 4.4m x 11.9m	30,159 lbs 13,680 kg	Jib Section ⑤ 	17'6" x 5'9" x 5'6" 5.3m x 1.7m x 1.7m	1,177 lbs 534 kg
Upper Slewing Unit	 8'3" x 8'2" x 3'7" 2.5m x 2.4m x 1.1m	8,684 lbs 3,939 kg	Jib Section ⑥ 	36' x 5'8" x 5'6" 10.7m x 1.7m x 1.7m	2,939 lbs 1,333 kg
Lower Slewing Unit	 8'2" x 8'1" x 19'8" 2.5m x 2.4m x 1.1m	5,586 lbs 2,534 kg	Jib Assembly for 180 ft (55 m) jib ①②③④⑤⑥	180' x 5'9" x 9'2" 55m x 1.8m x 2.8m	14,987 lbs 6,798 kg
Counter-jib	 25'8" x 11'9" x 9'3" 7.8m x 3.6m x 2.8m	14,286 lbs 6,480 kg	Jib Assembly for 164 ft (50 m) jib ①②③④⑥	164' x 5'9" x 9'2" 50m x 1.8m x 2.8m	12,857 lbs 5,832 kg
Operator's Cabin	 7'5" x 4'4" x 6'4" 2.3m x 1.3m x 1.9m	1,543 lbs 700 kg	Jib Assembly for 148 ft (45 m) jib ①②③⑤⑥	148' x 5'9" x 9'2" 45m x 1.8m x 2.8m	11,927 lbs 5,410 kg
Tower Head	 12'7" x 7'5" x 37'2" 6.9m x 2.3m x 11.3m	8,408 lbs 3,814 kg	Jib Assembly for 131 ft (40 m) jib ①②③⑥	131' x 5'9" x 9'2" 40m x 1.8m x 2.8m	10,750 lbs 4,876 kg
Hoisting Winch	 9'6" x 7'6" x 5'4" 2.9m x 2.3m x 1.6m	10,362 lbs 4,700 kg	Jib Assembly for 114 ft (35 m) jib ①②⑤⑥	114' x 5'9" x 9'2" 35m x 1.8m x 2.8m	9,738 lbs 4,417 kg
Luffing Winch	 7'10" x 5'10" x 3'10" 2.4m x 1.8m x 1.2m	7,716 lbs 3,500 kg	Jib Assembly for 98 ft (30 m) jib ①②⑥	98' x 5'9" x 9'2" 30m x 1.8m x 2.8m	8,560 lbs 3,883 kg
Undercarriage YZ86X	 19'8" x 19'8" x 7'9" 6.0m x 6.0m x 2.4m	34,502 lbs 15,650 kg			

NOTE: Weights and dimensions are approximate. Weigh components before lifting.

Turntable upper weight (slewing motors not incl.)	3939 kg/8684 lbs
Turntable lower weight (slewing ring not incl.)	2534 kg/5586 lbs
Top climbing unit total weight (all included)	5171 kg/11,400 lbs
Counter-jib Ballast Block A	4990 kg/11,000 lbs
Counter-jib Ballast Block B	4990 kg/11,000 lbs
Counter-jib Ballast Block C	1996 kg/4,400 lbs
Base Ballast A	6577 kg/14,500 lbs
Base Ballast D	8001 kg/17,640 lbs

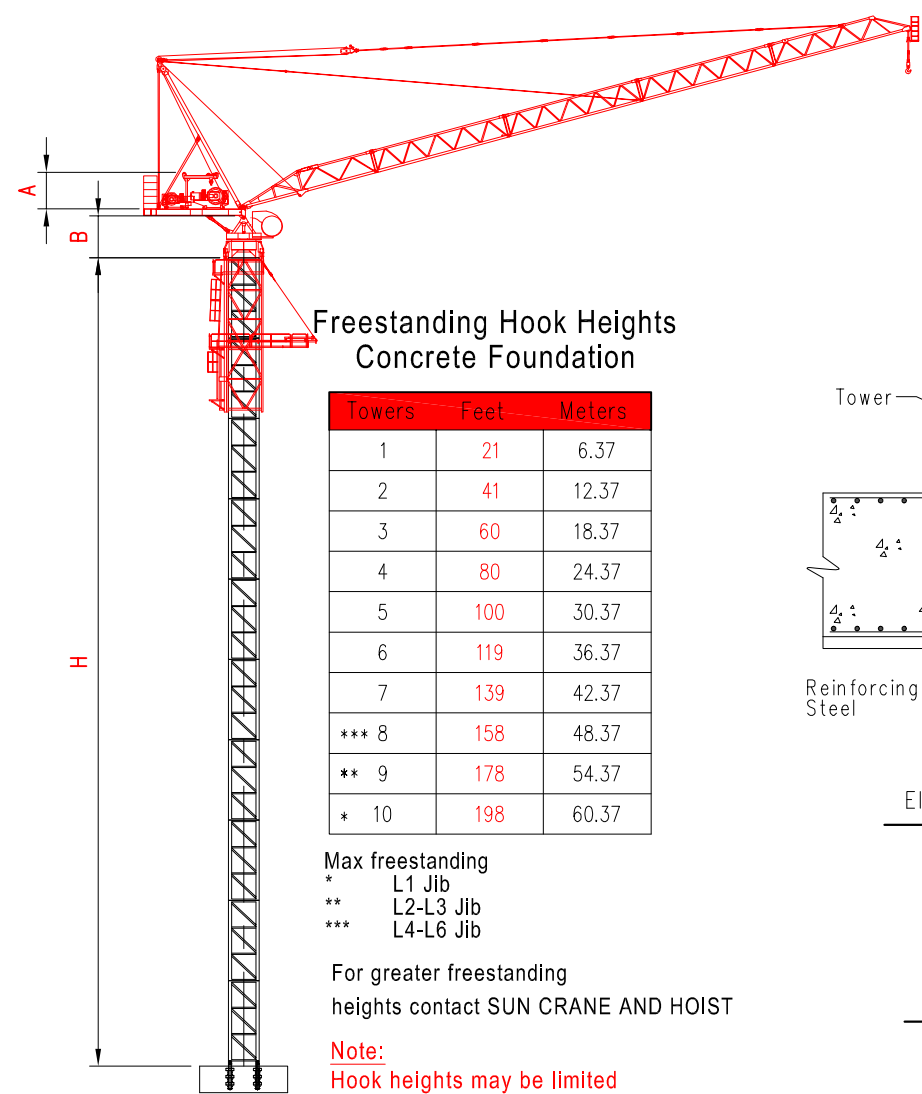
- Jib assembly doesn't include trolley and load block
- Hoist unit doesn't include wire rope, counterjib frame, platforms
- Long counterjib doesn't include hoist winch frame and tie bars
- Operator's cabin doesn't include platform (400 kg/880 lbs)
- Turntable complete doesn't include platform and operator cabin
- Counterjib includes handrails and platforms
- Cabin tower includes platform and ladder

Radius and capacity (feet and pounds)		2-Part-Line								
		ft								
Hook		49	66	82	98	114	131	148	164	180
Radius		lbs								
180ft	19,841lbs - 76'-10"	19,841	19,841	18,078	13,955	10,957	8,708	6,945	5,556	4,410
164ft	19,841lbs - 86'-4"	19,841	19,841	19,841	16,446	13,007	10,428	8,422	6,835	
148ft	19,841lbs - 91'-2"	19,841	19,841	19,841	17,416	13,911	11,288	9,260		
131ft	19,841lbs - 88'-3"	19,841	19,841	19,841	17,086	13,624	11,025			
114ft	19,841lbs - 89'-2"	19,841	19,841	19,841	17,527	14,110				
98ft	19,841lbs - 92'-10"	19,841	19,841	19,841	18,520					

Radius and capacity (feet and pounds)		4-Part-Line					
		ft					
Hook		49	66	82	98	114	131
Radius		lbs					
131ft	39,683lbs - 50'-10"	39,683	29,233	21,958	17,086	13,625	11,025
114ft	39,683lbs - 50'-10"	39,683	29,476	22,311	17,527	14,110	
98ft	39,683lbs - 52'-6"	39,683	30,666	23,369	18,520		

Radius and capacity (meters and tons)		2-Part-Line								
		m								
Hook		15	20	25	30	35	40	45	50	55
Radius		t								
55m	9t - 23.4m	9.00	9.00	8.20	6.33	4.97	3.95	3.15	2.52	2.00
50m	9t - 26.3m	9.00	9.00	9.00	7.46	5.90	4.73	3.82	3.10	
45m	9t - 27.8m	9.00	9.00	9.00	7.90	6.31	5.12	4.20		
40m	9t - 26.9m	9.00	9.00	9.00	7.75	6.18	5.00			
35m	9t - 27.2m	9.00	9.00	9.00	7.95	6.40				
30m	9t - 28.3m	9.00	9.00	9.00	8.40					

Radius and capacity (meters and tons)		4-Part-Line					
		m					
Hook		15	20	25	30	35	40
Radius		t					
40m	18t - 15.5m	18.00	13.26	9.96	7.75	6.18	5.00
35m	18t - 15.5m	18.00	13.37	10.12	7.95	6.40	
30m	18t - 16.0m	18.00	13.91	10.60	8.40		



Freestanding Hook Heights
Concrete Foundation

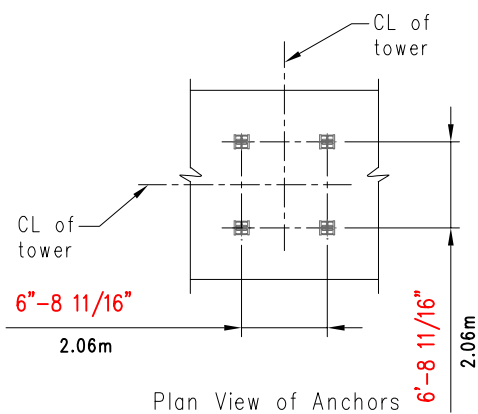
Towers	Feet	Meters
1	21	6.37
2	41	12.37
3	60	18.37
4	80	24.37
5	100	30.37
6	119	36.37
7	139	42.37
*** 8	158	48.37
** 9	178	54.37
* 10	198	60.37

Max freestanding
* L1 Jib
** L2-L3 Jib
*** L4-L6 Jib

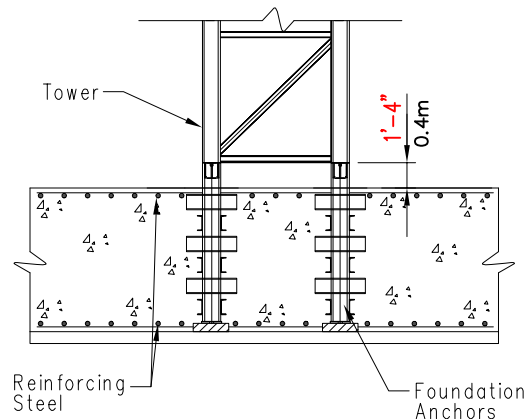
For greater freestanding heights contact SUN CRANE AND HOIST

Note:
Hook heights may be limited by geographic location.

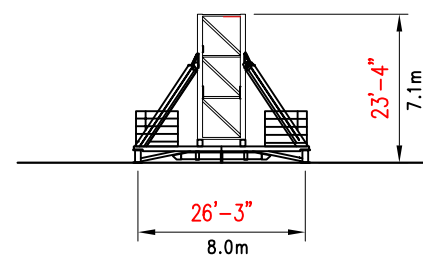
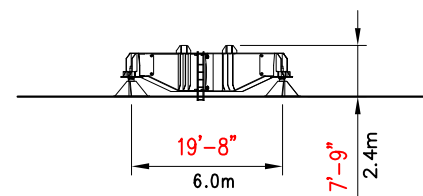
A = Height of service derrick 8'-8" (2.6m)
B = Height of complete slewing unit 9'-9" (3m)



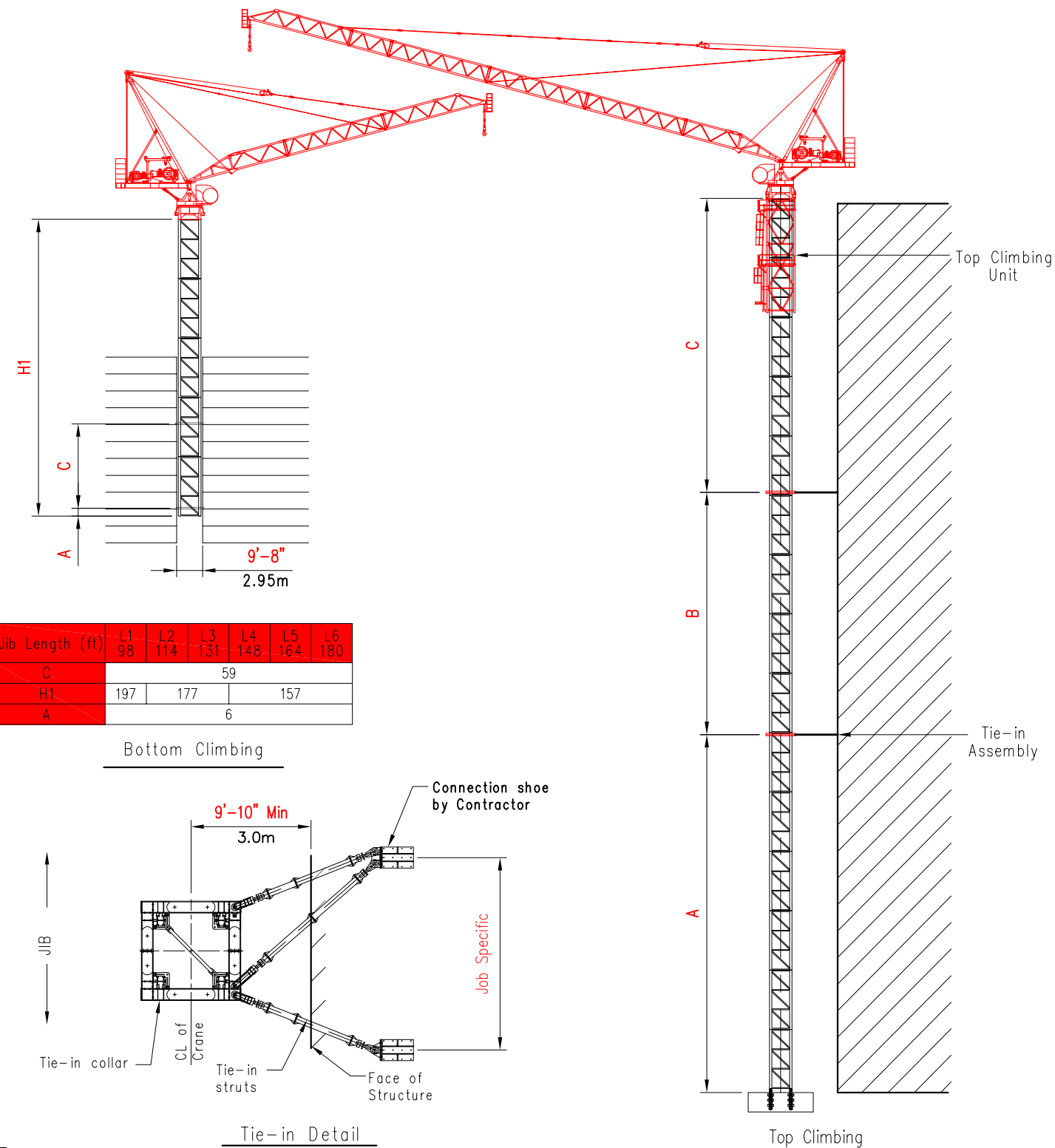
Plan View of Anchors



Elevation View of Anchors

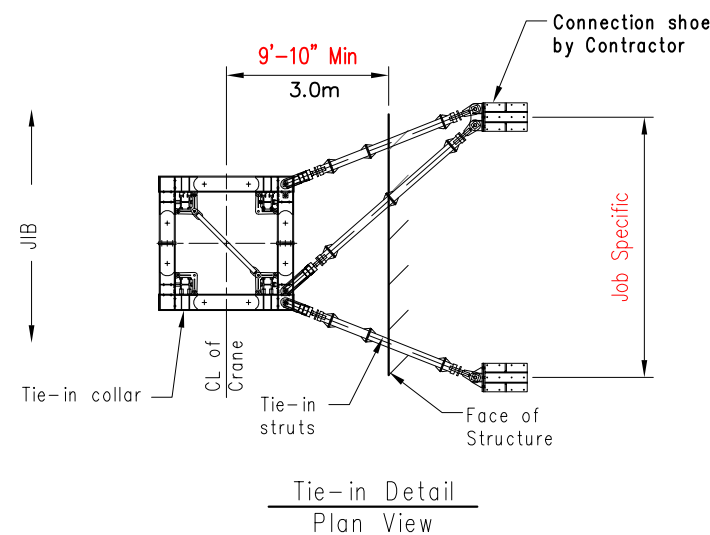


Elevation View of Undercarriage



Jib Length (ft)	L1	L2	L3	L4	L5	L6
C	59					
H1	197	177	157			
A	6					

Bottom Climbing



Tie-in Detail
Plan View

NOTE

Tie-in installations may vary due to job site conditions. Contact SUN CRANE AND HOIST for information regarding dimensions and reaction forces. The jib must be parallel to the face of building when climbing.

Jib Length (ft)	98	114	131	148	164	180
A Min/Max	98/177	98/177	98/157	98/157	98/157	98/138
B Min/Max	79/118	79/118	79/118	79/118	79/118	79/98
C Min/Max	112	112	98	98	98	85