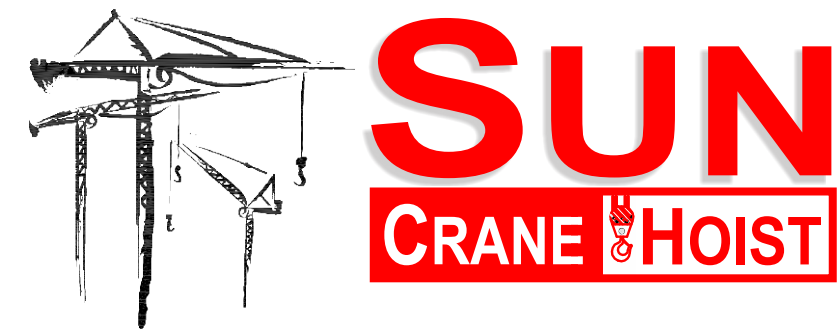




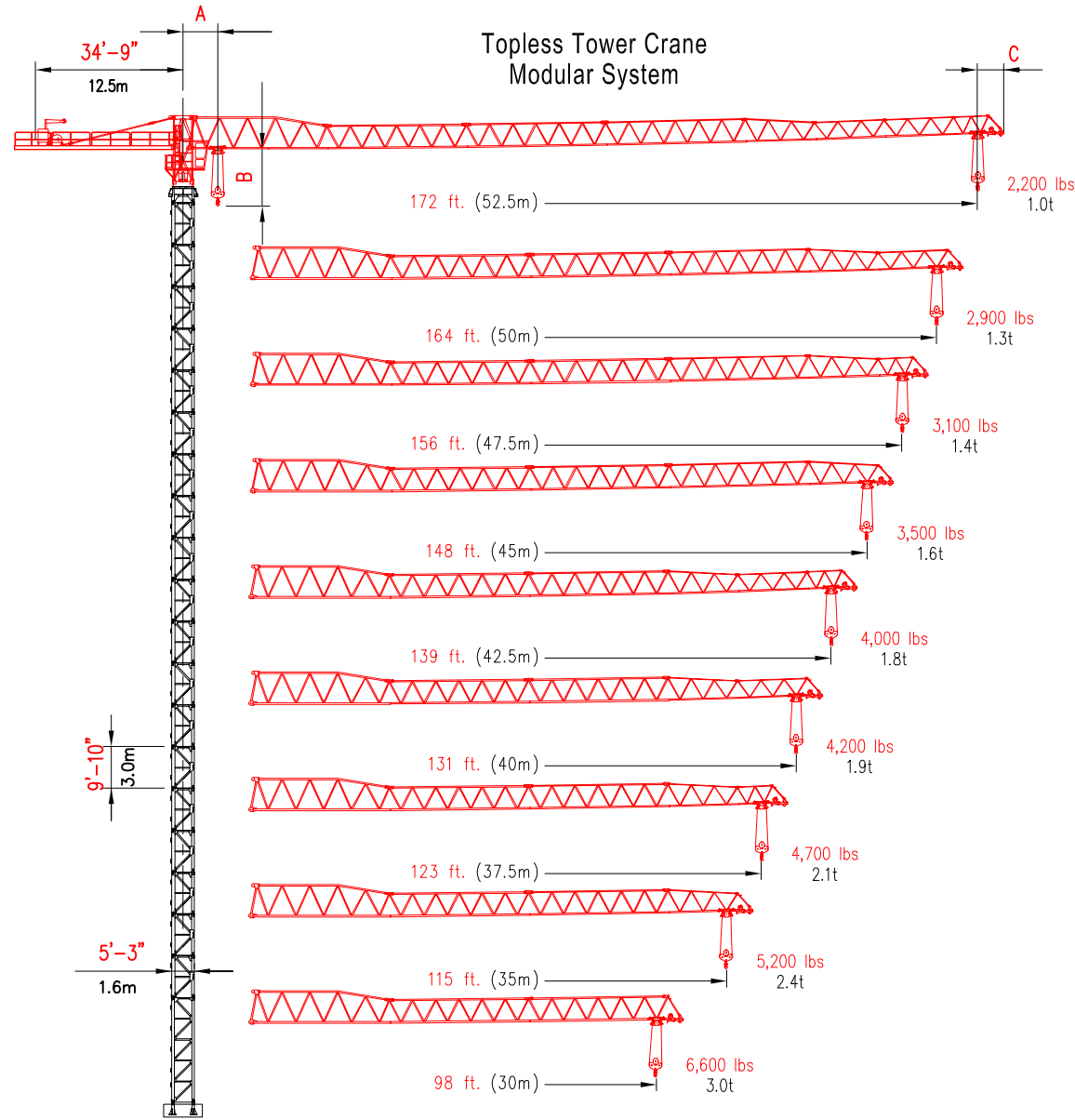
Turnkey Solutions * Parts and Service * Training and Safety * Transportation



SUN STT 100-6T

Topless Tower Crane

SUN STT 100-6t



Note: Specification sheet intended for information only*

- A = Centerline crane to minimum 2 part hook radius 8'-2" (2.5m)
- B = Bottom of jib to hook block 10'-6" (3.2m)
- C = Add for jib tip radius 5'-7" (1.7m)

SUN STT 100-6t

LINE SPEEDS AND POWER REQUIREMENTS

Hoist Unit
32 hp (24 kW)

2 - Part Line	Line Speed	Capacity
6,600 lbs 3t	0 - 131 ft/min 0 - 40 m/min	6,600 lbs
	0 - 197 ft/min 0 - 60 m/min	5,300 lbs
	0 - 328 ft/min 0 - 100 m/min	2,600 lbs

4 - Part Line	Line Speed	Capacity
13,200 lbs 6t	0 - 66 ft/min 0 - 20 m/min	13,200 lbs
	0 - 98 ft/min 0 - 30 m/min	10,600 lbs
	0 - 164 ft/min 0 - 50 m/min	5,300 lbs

Unit	Horsepower	Kilowatts	Speed
Trolley	3 hp	2.2 kw	0 - 187 ft/min 0 - 57 m/min
Swing	5 hp	3.7 kw	0 - 0.7 rpm

Power Requirements
480 volts, 60 cycle, 3 phase: 100 amp service

Additional Equipment and Services Available

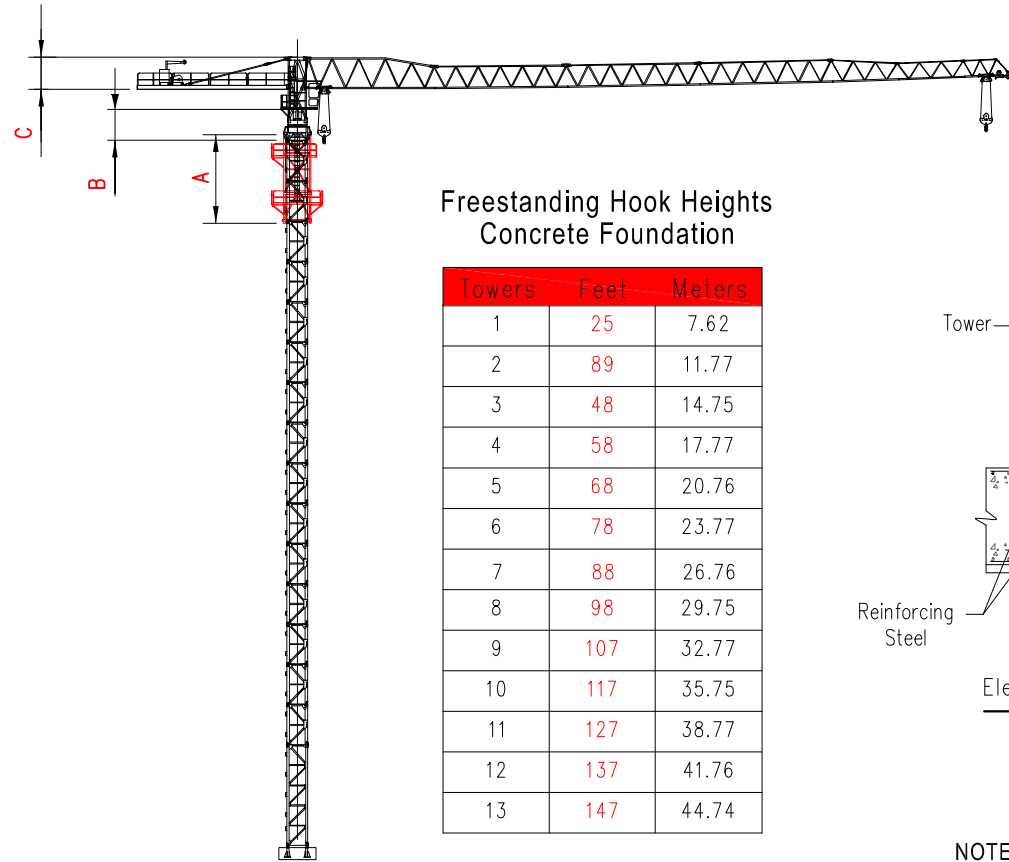
- Peiner Tower Cranes
- Sun Tower Cranes
- Hercules Elevators
- Timberland Derricks
- Specialized Rigging
- Technical Services
- Third Party Inspections
- Parts and Repair Services
- Erection and Dismantlement Services

*Due to product improvement specifications are subject to change without notice.

EQUIPMENT RENTALS - SALES - 24 HOUR SERVICE - YARD STORAGE & TRANSFERS - NATIONWIDE SERVICE

2214 FM 1187, Suite 1
Mansfield, TX 76063
O 817.225.1090
F 817.225.1095
WWW.SUNCRANEANDHOIST.COM

Hook Heights / Freestanding

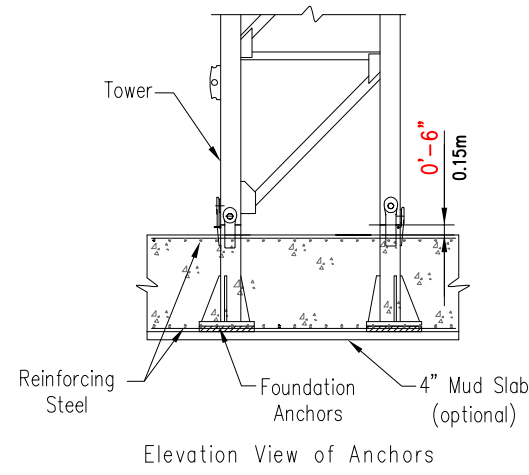
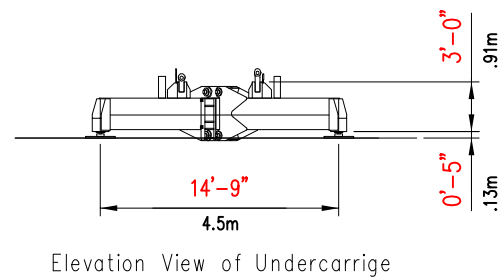


Freestanding Hook Heights
Concrete Foundation

Towers	Feet	Meters
1	25	7.62
2	89	11.77
3	48	14.75
4	58	17.77
5	68	20.76
6	78	23.77
7	88	26.76
8	98	29.75
9	107	32.77
10	117	35.75
11	127	38.77
12	137	41.76
13	147	44.74

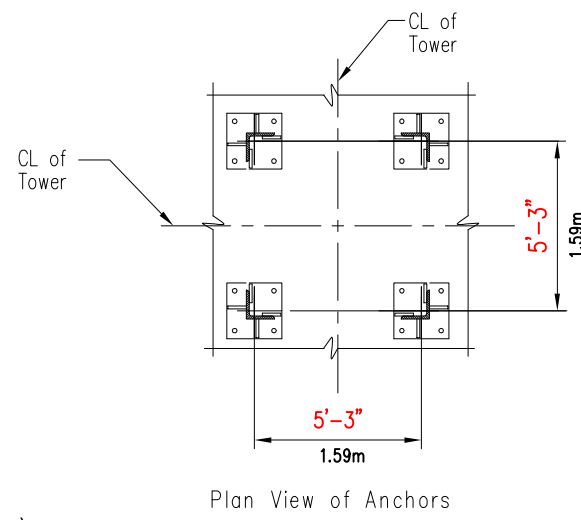
For greater freestanding heights or hook heights for the 14'-9" undercarriage contact SUN CRANE AND HOIST

Note:
Hook heights may be limited by geographic location.



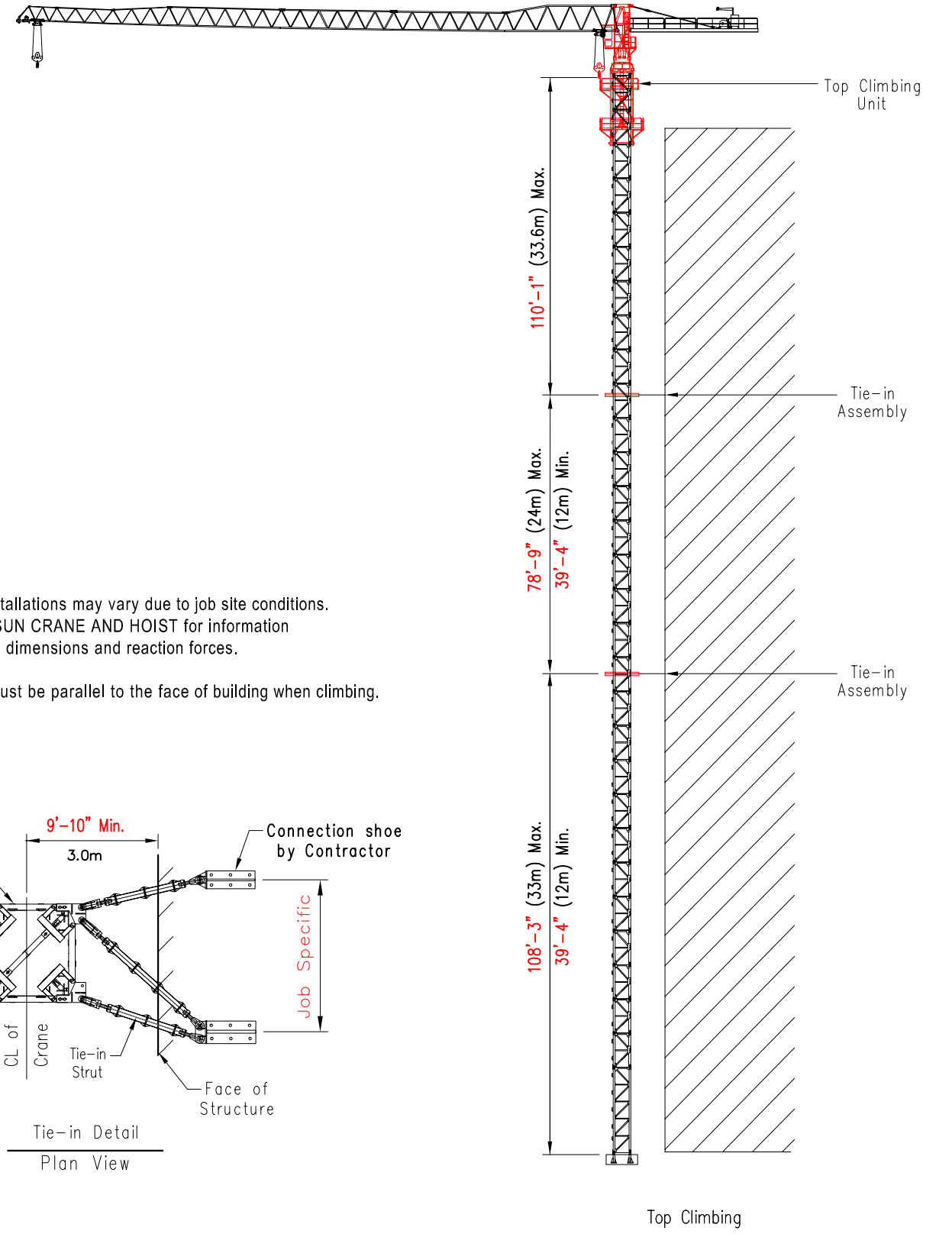
NOTE:

1. Lower or remove top climbing unit prior to operating the crane.

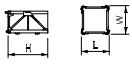
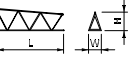
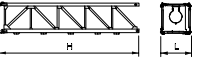
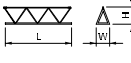
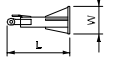
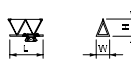


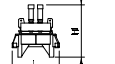
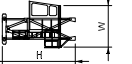
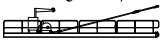

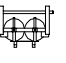
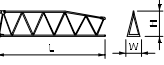
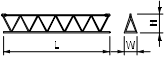
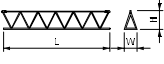
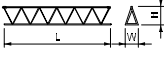


- A = Height of telescoping unit 22'-3" (6.8m)
- B = Height of complete slewing unit 8'-1" (2.5m)
- C = Height of jib section 7'-8" (2.35m)

Climbing / Tie-in Assembly



Crane Component List

DESCRIPTION	DIMENSION L x W x H	WEIGHT	DESCRIPTION	DIMENSION L x W x H	WEIGHT
Standard Tower Section L46A1 	5'3" x 5'3" x 9'10" 1.6m x 1.6m x 3.02m	2,712 lbs 1,230 kg	Jib Section ⑤ 	5'7" x 3'11" x 16'5" 1.7m x 1.2m x 5.0m	794 lbs 360 kg
Basic Mast L46G20 	25'3" x 5'7" x 5'7" 7.7m x 1.7m x 1.7m	6,185 lbs 2,805 kg	Jib Section ⑥ 	4'3" x 3'11" x 16'9" 1.3m x 1.2m x 5.11m	750 lbs 320 kg
Anchor Stool D46 	6'11" x 1'11" x 1'11" 2.13m x 0.6m x 0.6m	? lbs ? kg	Jib Section ⑦ 	4'3" x 3'11" x 8'7" 1.3m x 1.2m x 2.61m	375 lbs 170 kg
Climbing Cage 	12'0" x 11'9" x 22'3" 3.67m x 3.6m x 6.78m	6,174 lbs 2,800 kg	Jib Tip Nose 	3'10" x 3'11" x 2'1" 1.17m x 1.2m x 0.63m	198 lbs 90 kg
Complete Slewing Unit 	6'11" x 6'11" x 8'1" 1.86m x 1.86m x 2.5m	9,702 lbs 4,400 kg	Jib Assembly for 172 ft (52.5m) jib ①②③④⑤⑥⑦ + Jib Tip	172'3" x 3'11" x 8'0" 52.5m x 1.20m x 1.2m	13,455 lbs 6,103 kg
Cathead 	9'8" x 10'2" x 15'5" 2.96m x 3.12m x 4.69m	4,741 lbs 2,150 kg	Jib Assembly for 164 ft (50m) jib ①②③④⑤⑥ + Jib Tip	164'0" x 5'11" x 8'0" 50m x 1.20m x 1.2m	13,080 lbs 5,933 kg
Counter-Jib (Inc. hoisting winch) 	4'2" x 8'11" x 38'9" 1.27m x 2.72m x 11.81m	11,334 lbs 5,140 kg	Jib Assembly for 156 ft (47.5 m) jib ①②③④⑤⑦ + Jib Tip	155'10" x 3'11" x 8'0" 47.5m x 1.20m x 1.2m	12,750 lbs 5,783 kg
Hook Block 	4'5" x 0'9" x 4'3" 1.3m x 0.2m x 1.3m	560 lbs 254 kg	Jib Assembly for 148 ft (45m) jib ①②③④⑤ + Jib Tip	147'8" x 3'11" x 8'0" 45m x 1.20m x 1.2m	12,375 lbs 5,813 kg
Jib Trolley 	4'3" x 4'9" x 3'0" 1.29m x 1.45m x 0.92m	882 lbs 400 kg	Jib Assembly for 139 ft (42.5m) jib ①②③⑤⑥⑦ + Jib Tip	139'5" x 3'11" x 8'0" 42.5m x 1.20m x 1.2m	11,735 lbs 5,323 kg
Jib Section ① 	8'0" x 3'11" x 33'3" 2.44m x 1.20m x 10.15m	4,262 lbs 1,933 kg	Jib Assembly for 131 ft (40m) jib ①②③⑤⑥ + Jib Tip	131'3" x 3'11" x 8'0" 40m x 1.20m x 1.2m	11,360 lbs 5,153 kg
Jib Section ② 	33'9" x 3'11" x 33'8" 1.75m x 1.2m x 10.25m	2,976 lbs 1,350 kg	Jib Assembly for 123 ft (37.6m) jib ①②③⑤⑦ + Jib Tip	123'0" x 3'11" x 8'0" 37.5m x 1.20m x 1.2m	11,030 lbs 5,003 kg
Jib Section ③ 	5'9" x 3'11" x 33'8" 1.75m x 1.2m x 10.25m	2,425 lbs 1,110 kg	Jib Assembly for 115 ft (35m) jib ①②③⑤⑦ + Jib Tip	114'10" x 3'11" x 8'0" 35m x 1.20m x 1.2m	10,655 lbs 4,833 kg
Jib Section ④ 	5'-9" x 3'11" x 33'6" 1.75m x 1.2m x 10.2m	1,720 lbs 780 kg	Jib Assembly for 98 ft (30m) jib ①②③ + Jib Tip	98'5" x 3'11" x 8'0" 30m x 1.2m x 1.2m	9,861 lbs 4,473 kg

NOTE: Weights and dimensions are approximate. Weigh components before lifting.

- Jib assembly doesn't include trolley, pulley support nor load block.
- Counter-Jib include hoist winch frame and tie bars.
- Cathead include cabin, rails, platform and ladder.

Radius and Capacities

Radius and capacity (feet and pounds)		2-Part-Line										
		ft										
Hook		66	82	98	115	123	131	139	148	156	164	172
Radius		lbs										
172ft	6,600 lbs - 76'-0"	6,600	6,000	4,800	3,900	3,600	3,300	3,000	2,800	2,600	2,400	2,200
164ft	6,600 lbs - 86'-0"	6,600	6,600	5,600	4,600	4,200	3,900	3,600	3,300	3,100	4,900	
156ft	6,600 lbs - 86'-0"	6,600	6,600	5,600	4,600	4,200	3,900	3,600	3,300	3,100		
148ft	6,600 lbs - 90'-0"	6,600	6,600	5,900	4,900	4,500	4,100	3,800	3,500			
139ft	6,600 lbs - 93'-0"	6,600	6,600	6,200	5,100	4,700	4,300	4,000				
131ft	6,600 lbs - 91'-0"	6,600	6,600	6,000	5,000	4,500	4,200					
123ft	6,600 lbs - 94'-0"	6,600	6,600	6,200	5,200	4,700						
115ft	6,600 lbs - 94'-0"	6,600	6,600	6,300	5,200							
98ft	6,600 lbs - 98'-0"	6,600	6,600	6,600								

Radius and capacity (feet and pounds)		4-Part-Line										
		ft										
Hook		66	82	98	115	123	131	139	148	156	164	172
Radius		lbs										
172ft	13,200 lbs - 42'-0"	7,800	5,900	4,700	3,800	3,500	3,200	2,900	2,700	2,400	2,300	2,100
164ft	13,200 lbs - 47'-0"	9,000	6,900	5,500	4,500	4,100	3,800	3,500	3,200	3,000	2,800	
156ft	13,200 lbs - 47'-0"	9,000	6,900	5,500	4,500	4,100	3,800	3,500	3,200	3,000		
148ft	13,200 lbs - 49'-0"	9,500	7,300	5,800	4,800	4,400	4,000	3,700	3,400			
139ft	13,200 lbs - 51'-0"	9,900	7,600	6,000	5,000	4,600	4,200	3,900				
131ft	13,200 lbs - 50'-0"	9,600	7,400	5,900	4,900	4,400	4,100					
123ft	13,200 lbs - 52'-0"	10,000	7,700	6,200	5,000	4,600						
115ft	13,200 lbs - 52'-0"	10,000	7,700	6,200	5,100							
98ft	13,200 lbs - 56'-0"	11,000	8,500	6,800								

Radius and capacity (meters and tons)		2-Part-Line										
		m										
Hook		20	25	30	35	37.5	40	42.5	45	47.5	50	52.5
Radius		t										
52.5m	3t - 23.0m	3.00	2.72	2.18	1.77	1.63	1.50	1.38	1.27	1.18	1.09	1.00
50m	3t - 26.2m	3.00	3.00	2.54	2.09	1.91	1.77	1.63	1.50	1.41	1.91	
47.5m	3t - 26.2m	3.00	3.00	2.54	2.09	1.91	1.77	1.63	1.50	1.41		
45m	3t - 27.4m	3.00	3.00	2.78	2.22	2.04	1.86	1.72	1.59			
42.5m	3t - 28.3m	3.00	3.00	2.81	2.31	2.13	1.95	1.81				
40m	3t - 27.7m	3.00	3.00	2.72	2.27	2.04	1.91					
37.5m	3t - 28.6m	3.00	3.00	2.81	2.36	2.13						
35m	3t - 28.7m	3.00	3.00	2.86	2.36							
30m	3t - 30.0m	3.00	3.00	3.00								

Radius and capacity (meters and tons)		4-Part-Line										
		m										
Hook		20	25	30	35	37.5	40	42.5	45	47.5	50	52.5
Radius		t										
52.5m	6t - 12.8m	3.54	2.68	2.13	1.72	1.59	1.45	1.32	1.22	1.09	1.04	0.95
50m	6t - 14.4m	4.08	3.13	2.49	2.04	1.86	1.72	1.59	1.45	1.36	1.27	
47.5m	6t - 14.4m	4.08	3.13	2.49	2.04	1.86	1.72	1.59	1.45	1.36		
45m	6t - 15.1m	4.31	3.31	2.63	2.18	2.00	1.81	1.68	1.54			
42.5m	6t - 15.5m	4.49	3.45	2.72	2.27	2.09	1.91	1.77				
40m	6t - 15.2m	4.35	3.36	2.68	2.22	2.00	1.59					
37.5m	6t - 15.7m	4.54	3.49	2.81	2.27	2.09						
35m	6t - 15.8m	4.54	3.49	2.81	2.31							
30m	6t - 17.1m	4.99	3.86	3.08								