

2214 Hwy 1187
 Mansfield, TX 76063
 Phone - 817.225.1090
 Fax - 817.225.1095

www.suncraneandhoist.com



Link-Belt® HC-268 lifting crane capacities — open throat boom

PCSA Class 12-1471
 Refer to notes page 7.

Boom — tubular; 80" (2.03 m) wide, 68" (1.73 m) deep with open throat top section, 1/4" (32 mm) diameter boom pendants, boom live mast, and boom midpoint suspension pendants as required.

Jib — tubular; 32" (0.81 m) wide, 24" (0.61 m) deep.

Counterweights — Refer to charts below.

Mounting — rubber tire mobile base; FMC; 12 x 6 drive, 288" (7.32 m) wheelbase, 11' 10" (3.61 m) wide.

Counterweights							
"A" upper		"AB" upper		"A" bumper		"AB" bumper	
Pounds	kilograms	Pounds	kilograms	Pounds	kilograms	Pounds	kilograms
47,000	16 783	85,000	38 556	11,400	5 171	26,700	12 111

Open throat boom or boom + jib machine can lift off ground unassisted, without load.

Standard HC-268 must be equipped with the counterweight combinations below when the indicated boom or boom + jib lengths are used.	Minimum/maximum boom or boom + jib lengths allowed	On outriggers							
		Over rear				Over side			
		Boom		Boom + jib		Boom		Boom + jib	
		Feet	meters	Feet	meters	Feet	meters	Feet	meters
"AB" upper and No bumper	Minimum Maximum	60 300	27.21 136.08	Not applicable		60 280	27.21 127.00	Not applicable	
"A" upper and "A" bumper	Minimum Maximum	60 280	27.21 127.00	Not applicable		60 250	27.21 113.40	Not applicable	
"AB" upper and "A" bumper	Minimum Maximum	90 310	40.82 140.61	60 + 30 280 + 90	27.21 + 9.14 127.00 + 40.82	90 290	40.82 131.54	60 + 30 250 + 90	27.21 + 13.60 113.40 + 40.82
"AB" upper and "AB" bumper	Minimum Maximum	150 330	68.04 149.68	Not applicable		150 290	68.04 131.54	Not applicable	
				300 + 90	136.08 + 40.82			260 + 90	117.93 + 40.82

Machine travel ^① with open throat boom + jib, with no load ^②.

Standard HC-268 must be equipped with the counterweight combinations below when the indicated boom or boom + jib lengths are used.	Minimum/maximum boom or boom + jib lengths allowed	On tires ^③							
		Jobsite moves at 1 m.p.h. (1.61 km/h) with boom or boom + jib in the air ^④ , and with upper facing rear only.				Jobsite moves at 5 m.p.h. (8.05 km/h), with boom or boom + jib horizontal over rear only, and supporting with standard suspension.			
		Boom		Boom + jib		Boom		Boom + jib	
		Feet	meters	Feet	meters	Feet	meters	Feet	meters
"A" upper and "A" bumper	Minimum Maximum	80 280	24.38 85.33	Not applicable		60 130	18.29 39.62	Not applicable	
"AB" upper and No bumper	Minimum Maximum	80 300	24.38 91.44	Not applicable		60 140	18.29 42.67	Not applicable	
"AB" upper and "A" bumper	Minimum Maximum	90 310	27.43 94.48	60 + 30 280 + 90	18.29 + 9.14 85.34 + 27.43	90 140	27.43 42.67	60 + 30 110 + 90	18.29 + 9.14 33.53 + 27.43
"AB" upper and "AB" bumper	Minimum Maximum	150 ^⑤ 330	45.72 100.58	290 + 30 300 + 90	88.39 + 9.14 91.44 + 27.43	150 150	45.72 45.72	Not applicable	

① Hook block may be carried only when attached to carrier.

② Limited to 85% of available stability with machine standing level on firm supporting surface.

③ Air pressure in front and rear tires to be 100 p.s.i. (689 kPa) at 1 m.p.h. (1.6 km/h) or 5 m.p.h. (8.0 km/h).

④ Minimum/maximum boom lengths beyond 80' (24.38 m) and minimum maximum boom + jib lengths — with boom or boom + jib in the air — must be at 80' (24.38 m) hook radius.

⑤ Boom lengths 150' to 240' (45.72 to 73.15 m) must be at 110' (33.53 m) hook radius.

Caution: This material is for reference only. Operator must refer to in-cab capacity plate to determine allowable machine lifting capacities and operating procedures.

HC-268 lifting crane capacities

Refer to Notes page 7.

HC-268 open throat boom				Capacities on outriggers only											
Length	Radius		Boom point height	"AB" upper counterweight only		"A" bumper counterweights		"AB" upper and "A" bumper counterweights		"AB" upper and "AB" bumper counterweights		Over side and 360° swing		Over side and 360° swing	
	Feet	Meters		Over rear	Over side and 360° swing	Over rear	Over side and 360° swing	Over rear	Over side and 360° swing	Over rear	Over side and 360° swing	Lbs.	kg	Lbs.	kg
60' (18.28 m)	12	3.65	66' 7"	500.0*	226.8*	450.0*	204.1*	445.4*	206.6*	392.7*	178.1*	307.7*	139.6*	307.7*	139.6*
	13	3.96	66' 6"	432.4*	196.1*	432.4*	196.1*	412.8*	187.2*	374.7*	170.0*	300.0*	136.1*	300.0*	136.1*
	14	4.26	66' 4"	413.3*	187.5*	413.3*	187.5*	383.6*	174.0*	358.1*	162.4*	300.0*	136.1*	292.4*	132.6*
	15	4.57	66' 1"	395.9*	179.6*	395.9*	179.6*	358.3*	162.5*	342.8*	155.5*	292.4*	132.6*	285.2*	129.4*
	16	4.87	65' 11"	374.5*	169.9*	374.5*	169.9*	336.0*	152.4*	328.9*	149.2*	285.2*	129.4*	285.2*	129.4*
	17	5.18	65' 8"	352.5*	159.9*	352.5*	159.9*	316.1*	143.4*	313.8*	142.3*	238.6*	108.2*	238.6*	108.2*
	18	5.48	65' 5"	333.0*	151.0*	333.0*	151.0*	298.6*	135.4*	296.3*	134.4*	198.0*	89.8*	198.0*	89.8*
	19	5.79	65' 2"	315.3*	143.0*	315.3*	143.0*	282.7*	128.2*	281.1*	127.5*	188.9*	86.3*	188.9*	86.3*
	20	6.09	64' 11"	299.5*	135.9*	299.5*	135.9*	268.4*	121.7*	267.7*	121.4*	178.1*	80.4*	178.1*	80.4*
	25	7.62	63' 2"	238.8*	108.3*	238.8*	108.3*	214.0*	97.1*	214.0*	97.1*	142.3*	64.5*	142.3*	64.5*
	35	10.66	58' 0"	198.1*	89.9*	198.1*	89.9*	177.4*	80.5*	177.4*	80.5*	111.0*	50.3*	111.0*	50.3*
	40	12.19	52' 1"	169.0*	76.7*	169.0*	76.7*	151.0*	68.5*	151.0*	68.5*	94.6*	42.9*	94.6*	42.9*
50	15.24	44' 10"	147.1*	66.7*	147.1*	66.7*	131.3*	59.6*	131.3*	59.6*	79.6*	36.1*	79.6*	36.1*	
60	18.28	38' 7"	111.6*	50.6*	111.6*	50.6*	97.4*	44.2*	97.4*	44.2*	61.3*	27.8*	61.3*	27.8*	
70' (21.33 m)	13	3.96	76' 7"	357.7*	162.3*	357.7*	162.3*	357.7*	162.3*	357.7*	162.3*	307.7*	139.6*	307.7*	139.6*
	14	4.26	76' 5"	348.8*	158.2*	348.8*	158.2*	348.8*	158.2*	348.8*	158.2*	300.0*	136.1*	300.0*	136.1*
	15	4.57	76' 4"	344.4*	156.2*	344.4*	156.2*	344.4*	156.2*	344.4*	156.2*	300.0*	136.1*	292.4*	132.6*
	16	4.87	75' 11"	335.8*	152.3*	335.8*	152.3*	335.8*	152.3*	335.8*	152.3*	285.2*	129.4*	285.2*	129.4*
	17	5.18	75' 8"	327.4*	148.5*	327.4*	148.5*	327.4*	148.5*	327.4*	148.5*	238.6*	108.2*	238.6*	108.2*
	18	5.48	75' 5"	323.3*	146.6*	323.3*	146.6*	298.2*	135.3*	295.9*	134.2*	198.0*	89.8*	198.0*	89.8*
	19	5.79	75' 2"	314.8*	142.8*	314.8*	142.8*	282.3*	128.1*	280.7*	127.3*	188.9*	86.3*	188.9*	86.3*
	20	6.09	75' 0"	299.0*	135.6*	299.0*	135.6*	268.0*	121.6*	267.3*	121.0*	178.1*	80.4*	178.1*	80.4*
	25	7.62	71' 8"	238.6*	108.2*	238.6*	108.2*	213.7*	96.9*	213.7*	96.9*	142.3*	64.5*	142.3*	64.5*
	30	9.14	71' 11"	197.9*	89.8*	197.9*	89.8*	177.2*	80.4*	177.2*	80.4*	111.3*	50.5*	111.3*	50.5*
	35	10.66	63' 0"	168.8*	76.6*	168.8*	76.6*	150.9*	64.4*	150.9*	64.4*	94.6*	42.9*	94.6*	42.9*
	40	12.19	58' 3"	146.9*	66.6*	146.9*	66.6*	131.2*	59.5*	131.2*	59.5*	79.6*	36.1*	79.6*	36.1*
50	15.24	48' 0"	111.8*	50.7*	111.8*	50.7*	97.6*	44.3*	97.6*	44.3*	61.6*	27.9*	61.6*	27.9*	
60	18.28	35' 7"	86.8*	39.4*	86.8*	39.4*	75.6*	34.3*	75.6*	34.3*	49.5*	22.5*	49.5*	22.5*	
70	21.33	17' 3"	70.5*	32.0*	70.5*	32.0*	61.2*	27.8*	61.2*	27.8*	49.5*	22.5*	49.5*	22.5*	
90' (27.43 m)	16	4.87	96' 5"	307.7*	139.6*	307.7*	139.6*	307.7*	139.6*	307.7*	139.6*	307.7*	139.6*	307.7*	139.6*
	17	5.18	96' 2"	300.0*	136.1*	300.0*	136.1*	300.0*	136.1*	300.0*	136.1*	300.0*	136.1*	300.0*	136.1*
	18	5.48	95' 11"	292.4*	132.6*	292.4*	132.6*	292.4*	132.6*	292.4*	132.6*	292.4*	132.6*	292.4*	132.6*
	19	5.79	95' 8"	285.2*	129.4*	285.2*	129.4*	285.2*	129.4*	285.2*	129.4*	285.2*	129.4*	285.2*	129.4*
	20	6.09	95' 5"	285.2*	129.4*	285.2*	129.4*	285.2*	129.4*	285.2*	129.4*	285.2*	129.4*	285.2*	129.4*
	25	7.62	94' 7"	238.6*	108.2*	238.6*	108.2*	213.9*	97.0*	213.9*	97.0*	198.0*	89.8*	198.0*	89.8*
	30	9.14	93' 2"	198.0*	89.8*	198.0*	89.8*	177.3*	80.4*	177.3*	80.4*	147.0*	66.7*	147.0*	66.7*
	35	10.66	89' 5"	168.8*	76.6*	168.8*	76.6*	150.9*	64.4*	150.9*	64.4*	112.1*	50.8*	112.1*	50.8*
	40	12.19	84' 1"	147.0*	66.7*	147.0*	66.7*	131.3*	59.6*	131.3*	59.6*	105.4*	47.8*	105.4*	47.8*
	50	15.24	77' 1"	112.3*	50.9*	112.3*	50.9*	98.3*	44.6*	98.3*	44.6*	77.8*	35.3*	77.8*	35.3*
	60	18.28	70' 7"	87.2*	39.6*	87.2*	39.6*	76.0*	34.5*	76.0*	34.5*	65.2*	29.6*	65.2*	29.6*
	70	21.33	62' 0"	70.9*	32.2*	70.9*	32.2*	61.6*	27.9*	61.6*	27.9*	55.3*	25.3*	55.3*	25.3*
80	24.38	54' 2"	59.2*	26.9*	59.2*	26.9*	51.3*	23.3*	51.3*	23.3*	47.1*	21.4*	47.1*	21.4*	
90	27.43	45' 0"	50.5*	22.9*	50.5*	22.9*	43.6*	19.8*	43.6*	19.8*	35.0*	15.9*	35.0*	15.9*	
110' (33.53 m)	19	5.79	116' 1"	255.1*	115.7*	255.1*	115.7*	255.1*	115.7*	255.1*	115.7*	255.1*	115.7*	255.1*	115.7*
	20	6.09	116' 0"	252.0*	114.3*	252.0*	114.3*	252.0*	114.3*	252.0*	114.3*	252.0*	114.3*	252.0*	114.3*
	25	7.62	115' 1"	236.2*	107.1*	236.2*	107.1*	236.2*	107.1*	236.2*	107.1*	236.2*	107.1*	236.2*	107.1*
	30	9.14	114' 0"	196.9*	89.3*	196.9*	89.3*	196.9*	89.3*	196.9*	89.3*	196.9*	89.3*	196.9*	89.3*
	35	10.66	112' 7"	167.9*	76.2*	167.9*	76.2*	167.9*	76.2*	167.9*	76.2*	167.9*	76.2*	167.9*	76.2*
	40	12.19	110' 11"	146.1*	66.3*	146.1*	66.3*	146.1*	66.3*	146.1*	66.3*	146.1*	66.3*	146.1*	66.3*
50	15.24	106' 10"	112.0*	50.8*	112.0*	50.8*	112.0*	50.8*	112.0*	50.8*	112.0*	50.8*	112.0*	50.8*	
60	18.28	98' 6"	86.9*	39.4*	86.9*	39.4*	86.9*	39.4*	86.9*	39.4*	86.9*	39.4*	86.9*	39.4*	

(continued)

Capacities shown in thousands of pounds and kilograms.

Measured vertically from center of boom head sheaves to ground with machine standing on tires.

Swing applicable only when front center jack and rear outriggers are set in proper working position.

GENERAL INFORMATION ONLY

HC-268 lifting crane capacities

Refer to Notes page 7.

HC-268 open throat boom		Capacities on outriggers only																							
Length	Radius Feet	meters	Angle Deg.	Boom point height Feet	"A" upper and "A" bumper counterweights		"AB" upper and "A" bumper counterweights		"AB" upper and "AB" bumper counterweights		Over side and 360° swing														
					Lbs.	kg	Lbs.	kg	Lbs.	kg	Lbs.	kg													
110' (33.53 m)	70	21.34	52.6	94' 8"	28.85	70.6	32.0	63.9	29.0	61.3	27.8	49.6	22.5	50.0	22.7	50.0	22.7	50.0	22.7	50.0	22.7	50.0	22.7	50.0	
	80	24.38	45.7	86' 0"	26.22	58.9	26.7	53.2	24.1	51.0	23.1	41.1	18.6	41.1	18.6	41.1	18.6	41.1	18.6	41.1	18.6	41.1	18.6	41.1	18.6
	90	27.43	37.9	74' 10"	22.81	50.2	22.8	45.3	20.5	43.3	19.6	34.8	15.8	34.8	15.8	34.8	15.8	34.8	15.8	34.8	15.8	34.8	15.8	34.8	15.8
	100	30.48	28.3	59' 6"	18.13	43.5	19.7	37.4	17.7	37.4	17.0	29.9	13.4	29.9	13.4	29.9	13.4	29.9	13.4	29.9	13.4	29.9	13.4	29.9	13.4
	110	33.53	13.8	33' 6"	10.21	38.1	17.3	34.3	15.6	32.7	14.8	25.9	11.7	25.9	11.7	25.9	11.7	25.9	11.7	25.9	11.7	25.9	11.7	25.9	11.7
	22	6.71	81.7	135' 11"	41.43	218.4*	99.1*	218.4*	99.1*	218.4*	99.1*	218.4*	99.1*	218.4*	99.1*	218.4*	99.1*	218.4*	99.1*	218.4*	99.1*	218.4*	99.1*	218.4*	99.1*
	25	7.62	80.3	135' 5"	41.28	207.5*	94.1*	207.5*	94.1*	207.5*	94.1*	207.5*	94.1*	207.5*	94.1*	207.5*	94.1*	207.5*	94.1*	207.5*	94.1*	207.5*	94.1*	207.5*	94.1*
	30	9.14	78.1	134' 6"	40.99	195.7*	88.8*	195.7*	88.8*	195.7*	88.8*	195.7*	88.8*	195.7*	88.8*	195.7*	88.8*	195.7*	88.8*	195.7*	88.8*	195.7*	88.8*	195.7*	88.8*
	35	10.67	75.8	133' 4"	40.64	166.8*	75.7*	166.8*	75.7*	166.8*	75.7*	166.8*	75.7*	166.8*	75.7*	166.8*	75.7*	166.8*	75.7*	166.8*	75.7*	166.8*	75.7*	166.8*	75.7*
	40	12.19	73.5	132' 0"	40.22	145.1*	65.8*	145.1*	65.8*	145.1*	65.8*	145.1*	65.8*	145.1*	65.8*	145.1*	65.8*	145.1*	65.8*	145.1*	65.8*	145.1*	65.8*	145.1*	65.8*
50	15.24	68.9	128' 7"	39.19	111.9	50.8	101.7	46.1	97.7	44.3	79.8	36.2	79.8	36.2	79.8	36.2	79.8	36.2	79.8	36.2	79.8	36.2	79.8	36.2	
60	18.29	64.1	124' 2"	37.86	86.4	39.2	78.4	35.6	75.2	34.1	61.4	27.9	61.4	27.9	61.4	27.9	61.4	27.9	61.4	27.9	61.4	27.9	61.4	27.9	
70	21.34	59.1	118' 10"	36.21	70.1	31.8	63.5	28.8	60.9	27.6	49.2	22.3	49.2	22.3	49.2	22.3	49.2	22.3	49.2	22.3	49.2	22.3	49.2	22.3	
80	24.38	53.8	112' 2"	34.19	58.4	26.5	52.8	24.0	50.5	22.9	40.6	18.4	40.6	18.4	40.6	18.4	40.6	18.4	40.6	18.4	40.6	18.4	40.6	18.4	
90	27.43	48.1	104' 0"	31.71	49.7	22.5	44.8	20.3	42.8	19.4	34.4	15.6	34.4	15.6	34.4	15.6	34.4	15.6	34.4	15.6	34.4	15.6	34.4	15.6	
100	30.48	41.9	94' 0"	28.66	43.0	19.5	38.7	17.6	37.1	16.8	29.5	13.4	29.5	13.4	29.5	13.4	29.5	13.4	29.5	13.4	29.5	13.4	29.5	13.4	
110	33.53	34.7	81' 5"	24.80	37.7	17.1	34.0	15.4	32.4	14.7	25.5	11.6	25.5	11.6	25.5	11.6	25.5	11.6	25.5	11.6	25.5	11.6	25.5	11.6	
120	36.58	26.0	64' 4"	19.60	33.5	15.2	29.9	13.6	28.5	12.9	22.3	10.1	22.3	10.1	22.3	10.1	22.3	10.1	22.3	10.1	22.3	10.1	22.3	10.1	
130	39.62	12.7	35' 10"	10.92	29.8	13.5	26.9	12.1	25.3	11.5	19.5	8.8	19.5	8.8	19.5	8.8	19.5	8.8	19.5	8.8	19.5	8.8	19.5	8.8	
25	7.62	81.6	155' 8"	47.46	185.6*	84.2*	185.6*	84.2*	185.6*	84.2*	185.6*	84.2*	185.6*	84.2*	185.6*	84.2*	185.6*	84.2*	185.6*	84.2*	185.6*	84.2*	185.6*	84.2*	
30	9.14	79.7	153' 11"	47.21	174.0*	78.9*	174.0*	78.9*	174.0*	78.9*	174.0*	78.9*	174.0*	78.9*	174.0*	78.9*	174.0*	78.9*	174.0*	78.9*	174.0*	78.9*	174.0*	78.9*	
35	10.67	77.7	153' 11"	46.90	165.2*	74.9*	165.2*	74.9*	165.2*	74.9*	165.2*	74.9*	165.2*	74.9*	165.2*	74.9*	165.2*	74.9*	165.2*	74.9*	165.2*	74.9*	165.2*	74.9*	
40	12.19	75.8	152' 8"	46.54	144.0*	65.3*	144.0*	65.3*	144.0*	65.3*	144.0*	65.3*	144.0*	65.3*	144.0*	65.3*	144.0*	65.3*	144.0*	65.3*	144.0*	65.3*	144.0*	65.3*	
50	15.24	71.8	149' 10"	45.66	111.4	50.5	111.4	45.9	97.2	44.1	79.4	36.0	79.4	36.0	79.4	36.0	79.4	36.0	79.4	36.0	79.4	36.0	79.4	36.0	
60	18.29	67.7	146' 1"	44.53	89.9	39.0	85.6	37.9	74.7	33.9	60.9	27.6	60.9	27.6	60.9	27.6	60.9	27.6	60.9	27.6	60.9	27.6	60.9	27.6	
70	21.34	63.5	141' 7"	43.15	69.6	31.6	63.0	28.6	60.3	27.4	48.7	22.1	48.7	22.1	48.7	22.1	48.7	22.1	48.7	22.1	48.7	22.1	48.7	22.1	
80	24.38	59.2	136' 1"	41.49	57.9	26.3	52.2	23.7	50.0	22.7	40.0	18.1	40.0	18.1	40.0	18.1	40.0	18.1	40.0	18.1	40.0	18.1	40.0	18.1	
90	27.43	54.6	129' 7"	39.50	49.1	22.3	44.2	20.0	42.3	19.2	33.9	15.4	33.9	15.4	33.9	15.4	33.9	15.4	33.9	15.4	33.9	15.4	33.9	15.4	
100	30.48	49.8	121' 10"	37.14	42.4	19.2	38.1	17.3	36.6	16.7	28.9	13.1	28.9	13.1	28.9	13.1	28.9	13.1	28.9	13.1	28.9	13.1	28.9	13.1	
110	33.53	44.6	112' 7"	34.32	37.3	16.9	33.4	15.2	31.9	14.5	25.0	11.3	25.0	11.3	25.0	11.3	25.0	11.3	25.0	11.3	25.0	11.3	25.0	11.3	
120	36.58	38.8	101' 5"	30.90	33.0	15.0	29.4	13.3	28.0	12.7	21.7	9.8	21.7	9.8	21.7	9.8	21.7	9.8	21.7	9.8	21.7	9.8	21.7	9.8	
130	39.62	32.3	87' 5"	26.63	29.3	13.3	26.1	11.8	24.8	11.2	19.1	8.7	19.1	8.7	19.1	8.7	19.1	8.7	19.1	8.7	19.1	8.7	19.1	8.7	
140	42.67	24.2	68' 8"	20.95	26.2	11.9	23.2	10.5	22.1	10.0	16.8	7.6	16.8	7.6	16.8	7.6	16.8	7.6	16.8	7.6	16.8	7.6	16.8	7.6	
150	45.72	11.8	38' 0"	11.57	23.6	10.7	20.8	9.4	19.7	8.9	14.8	6.7	14.8	6.7	14.8	6.7	14.8	6.7	14.8	6.7	14.8	6.7	14.8	6.7	
27	8.23	81.9	175' 7"	53.53	157.0*	71.2*	157.0*	71.2*	157.0*	71.2*	157.0*	71.2*	157.0*	71.2*	157.0*	71.2*	157.0*	71.2*	157.0*	71.2*	157.0*	71.2*	157.0*	71.2*	
30	9.14	80.9	175' 2"	53.39	153.1*	69.4*	153.1*	69.4*	153.1*	69.4*	153.1*	69.4*	153.1*	69.4*	153.1*	69.4*	153.1*	69.4*	153.1*	69.4*	153.1*	69.4*	153.1*	69.4*	
35	10.67	79.2	174' 4"	53.12	145.4*	66.0*	145.4*	66.0*	145.4*	66.0*	145.4*	66.0*	145.4*	66.0*	145.4*	66.0*	145.4*	66.0*	145.4*	66.0*	145.4*	66.0*	145.4*	66.0*	
40	12.19	77.5	173' 4"	52.81	140.0*	63.5*	140.0*	63.5*	140.0*	63.5*	140.0*	63.5*	140.0*	63.5*	140.0*	63.5*	140.0*	63.5*	140.0*	63.5*	140.0*	63.5*	140.0*	63.5*	
50	15.24	74.0	170' 8"	52.03	110.9	50.3	100.7	45.7	96.7	43.9	78.8	35.7	78.8	35.7	78.8	35.7	78.8	35.7	78.8	35.7	78.8	35.7	78.8	35.7	
60	18.29	70.5	163' 7"	51.06	85.3	38.7	77.3	35.1	74.5	33.8	60.4	27.8	60.4	27.8	60.4	27.8	60.4	27.8	60.4	27.8	60.4	27.8	60.4	27.8	
70	21.34	66.9	163' 7"	49.87	69.0	31.3	62.4	28.3	59.7	27.1	48.1	21.8	48.1	21.8	48.1	21.8	48.1	21.8	48.1	21.8	48.1	21.8	48.1	21.8	
80	24.38	63.1	158' 11"	48.44	57.2	25.9	51.6	23.4	49.3	22.4	39.4	17.9	39.4	17.9	39.4	17.9	39.4	17.9	39.4	17.9	39.4	17.9	39.4	17.9	
90	27.43	59.3	153' 5"	46.77	48.5	22.0	43.6	19.8	41.6	18.9	33.3	15.1	33.3	15.1	33.3	15.1	33.3	15.1	33.3	15.1	33.3	15.1	33.3	15.1	
100	30.48	55.3	147' 0"	44.81	41.8	19.0	37.4	17.0	36.0	16.3	28.3	12.8	28.3	12.8	28.3	12.8	28.3	12.8	28.3	12.8	28.3	12.8	28.3	12.8	
110	33.53	51.1	139' 6"	42.53	36.7	16.6	32.8	14.9	31.3	14.2	24.4	11.1	24.4	11.1	24.4	11.1	24.4	11.1	24.4	11.1	24.4	11.1	24.4	11.1	
120	36.58	46.6	130' 10"	39.86	32.4	14.7	28.8	13.1	27.4	12.4	21.1	9.6	21.1	9.6	21.1										

HC-268 lifting crane capacities

Refer to Notes page 7.

HC-268 open throat boom				Capacities ① on outriggers only															
Length	Radius Feet (meters)	Angle Deg.	Boom point height Feet (meters)	"AB" upper counterweight only			"A" upper and "A" bumper counterweights			"AB" upper and "A" bumper counterweights			"AB" upper and "AB" bumper counterweights						
				Over rear kg	Over side and 360° swing ③ kg	Over rear Lbs.	Over rear kg	Over side and 360° swing ③ kg	Over rear Lbs.	Over rear kg	Over side and 360° swing ③ kg	Over rear Lbs.	Over rear kg	Over side and 360° swing ③ kg	Over rear Lbs.	Over rear kg	Over side and 360° swing ③ kg		
190' (57.91 m)	30	9.14	195' 5"	60.7	133.8*	60.7	133.8*	60.7	133.8*	60.7	133.8*	60.7	133.8*	60.7	133.8*	60.7	133.8*	60.7	133.8*
	35	10.67	194' 7"	59.32	130.4*	59.1	130.4*	59.1	130.4*	59.1	130.4*	59.1	130.4*	59.1	130.4*	59.1	130.4*	59.1	130.4*
	40	12.19	193' 8"	59.04	125.5*	56.9	125.5*	56.9	125.5*	56.9	125.5*	56.9	125.5*	56.9	125.5*	56.9	125.5*	56.9	125.5*
	50	15.24	191' 5"	58.35	110.3	50.0	110.3	43.6	78.3	35.5	111.4	50.5	103.3	47.1	105.5	41.1	107.5	37.4	108.8
	60	18.29	188' 7"	57.48	84.7	38.4	84.7	33.5	59.8	27.1	90.7	41.1	79.2	35.9	82.5	34.4	86.6	30.2	88.9
	70	21.34	185' 1"	56.43	68.4	31.0	68.4	26.8	47.5	21.6	75.0	34.0	63.8	28.9	66.6	29.6	70.9	24.9	73.2
	80	24.38	181' 4"	55.19	56.6	25.7	56.6	22.1	38.8	17.6	62.6	28.4	52.7	23.9	60.5	25.6	65.5	21.1	68.4
	90	27.43	176' 4"	53.73	47.8	21.7	47.8	18.6	32.7	14.8	53.1	24.1	44.4	20.1	49.6	22.5	53.9	18.1	56.8
	100	30.48	170' 10"	52.05	41.1	18.6	41.1	16.6	27.7	12.6	45.7	20.7	38.1	17.3	43.9	19.9	48.9	15.9	51.2
	110	33.53	164' 5"	50.11	36.1	14.4	36.1	14.4	24.8	11.2	39.9	18.1	33.4	15.2	39.1	17.7	43.9	13.9	46.2
	120	36.58	157' 1"	47.89	31.7	11.3	31.7	11.3	22.0	9.3	35.5	16.1	29.2	13.2	35.5	16.1	39.1	11.7	42.4
	130	39.62	148' 10"	45.34	28.1	12.7	28.1	12.7	17.8	8.1	31.5	14.3	25.8	11.4	32.0	14.5	35.5	10.4	39.8
	140	42.67	139' 1"	42.40	25.0	10.2	25.0	10.2	13.6	6.2	28.2	11.5	20.4	9.3	29.0	13.2	32.0	9.8	37.2
	150	45.72	127' 11"	38.98	22.4	10.2	22.4	10.2	11.9	5.4	25.3	11.5	18.3	8.3	26.4	12.0	29.0	9.8	34.6
	160	48.77	114' 6"	34.91	20.1	8.2	20.1	8.2	10.4	4.7	22.9	10.4	16.4	7.9	24.0	10.9	27.2	9.8	32.0
	170	51.82	98' 2"	29.94	18.1	8.2	18.1	8.2	9.1	4.1	20.7	9.4	14.8	7.1	22.0	10.0	25.0	9.8	29.4
	180	54.86	85' 10"	23.41	16.4	7.4	16.4	7.4	8.0	3.6	18.8	8.5	13.3	6.4	20.0	9.1	22.0	9.8	26.8
	190	57.91	70' 10"	17.75	14.8	6.7	14.8	6.7	7.3	3.1	17.1	7.8	12.6	5.8	18.8	8.5	20.0	9.1	24.2
	210' (64.01 m)	33	10.06	215' 2"	57.6	113.8*	57.6	113.8*	57.6	113.8*	57.6	113.8*	57.6	113.8*	57.6	113.8*	57.6	113.8*	57.6
35		10.66	214' 11"	56.58	113.8*	56.5	113.8*	56.5	113.8*	56.5	113.8*	56.5	113.8*	56.5	113.8*	56.5	113.8*	56.5	113.8*
40		12.19	214' 0"	65.24	108.1*	49.0	108.1*	49.0	108.1*	49.0	108.1*	49.0	108.1*	49.0	108.1*	49.0	108.1*	49.0	108.1*
50		15.24	209' 6"	63.84	98.7*	44.8	98.7*	44.8	98.7*	44.8	98.7*	44.8	98.7*	44.8	98.7*	44.8	98.7*	44.8	98.7*
60		18.28	206' 5"	62.90	84.0	38.1	84.0	33.2	74.3	33.7	89.7*	40.6	78.5	35.6	89.7*	40.6	81.8*	37.1	88.9
70		21.33	206' 5"	62.90	67.8	30.8	67.8	26.4	58.5	26.5	74.9*	33.9	63.2	28.5	74.9*	33.9	65.9	29.9	74.9
80		24.38	198' 6"	61.79	55.9	26.4	55.9	22.8	48.0	21.8	62.0	28.1	52.0	23.5	62.0	28.1	55.5	25.1	62.0
90		27.43	198' 6"	60.50	47.1	21.4	47.1	19.1	40.3	18.3	52.4	23.7	43.7	19.8	52.4	23.7	55.5	25.1	52.4
100		30.48	193' 7"	59.02	40.4	18.3	40.4	16.5	34.7	15.7	45.0	20.4	37.3	16.9	45.0	20.4	55.5	25.1	45.0
110		33.53	188' 1"	57.33	35.4	16.1	35.4	14.3	30.9	13.6	39.2	17.7	32.7	14.8	39.2	17.7	55.5	25.1	39.2
120		36.58	181' 10"	55.41	31.0	14.2	31.0	12.5	27.5	11.8	34.8	15.7	28.6	12.9	34.8	15.7	55.5	25.1	34.8
130	39.62	174' 8"	53.24	27.4	12.4	27.4	10.9	24.1	10.3	30.8	13.9	25.1	11.3	30.8	13.9	55.5	25.1	30.8	
140	42.67	166' 7"	50.78	24.3	11.0	24.3	9.7	21.3	9.1	27.5	12.4	22.2	10.0	27.5	12.4	55.5	25.1	27.5	
150	45.72	157' 5"	47.98	21.7	9.8	21.7	8.6	18.9	8.1	24.6	11.1	19.7	8.9	24.6	11.1	55.5	25.1	24.6	
160	48.77	146' 11"	44.79	19.4	8.8	19.4	7.6	16.8	7.2	22.2	10.0	17.6	7.9	22.2	10.0	55.5	25.1	22.2	
170	51.82	134' 10"	41.70	17.4	7.9	17.4	6.8	15.0	6.4	20.0	9.0	15.7	6.3	20.0	9.0	55.5	25.1	20.0	
180	54.86	120' 7"	36.75	15.7	7.1	15.7	6.1	13.4	5.7	18.1	8.2	14.1	5.7	18.1	8.2	55.5	25.1	18.1	
190	57.91	103' 2"	31.45	14.1	6.4	14.1	5.4	11.9	5.0	16.4	7.4	12.6	5.1	16.4	7.4	55.5	25.1	16.4	
200	60.96	80' 6"	24.53	12.7	5.8	12.7	4.9	10.7	4.5	14.9	6.7	11.3	4.6	14.9	6.7	55.5	25.1	14.9	
210	64.01	10.0	17.3	11.5	5.2	11.5	4.3	9.5	4.0	13.5	6.1	10.1	4.6	13.5	6.1	55.5	25.1	13.5	
230' (70.10 m)	36	10.97	234' 11"	71.61	91.0*	41.3	91.0*	41.3	91.0*	41.3	91.0*	41.3	91.0*	41.3	91.0*	41.3	91.0*	41.3	91.0*
	40	12.19	234' 4"	71.42	90.4*	41.0	90.4*	41.0	90.4*	41.0	90.4*	41.0	90.4*	41.0	90.4*	41.0	90.4*	41.0	90.4*
	50	15.24	230' 6"	70.86	87.1*	39.5	87.1*	39.5	87.1*	39.5	87.1*	39.5	87.1*	39.5	87.1*	39.5	87.1*	39.5	87.1*
	60	18.28	227' 5"	70.15	79.4*	36.0	79.4*	36.0	79.4*	36.0	79.4*	36.0	79.4*	36.0	79.4*	36.0	79.4*	36.0	79.4*
	70	21.33	227' 5"	69.30	67.1	30.4	67.1	26.2	62.5	28.3	67.5*	30.6	62.5	28.3	67.5*	30.6	65.3	29.6	67.5
	80	24.38	224' 1"	68.30	55.2	25.0	55.2	22.5	47.3	21.0	59.9*	27.2	51.3	20.4	59.9*	27.2	65.3	29.6	59.9
	90	27.43	220' 4"	67.14	46.4	21.0	46.4	18.8	39.5	18.0	51.7	23.4	43.0	19.5	51.7	23.4	65.3	29.6	51.7
	100	30.48	215' 11"	65.81	39.6	18.0	39.6	16.2	34.0	15.4	44.3	20.0	37.1	16.8	44.3	20.0	65.3	29.6	44.3
	110	33.53	211' 0"	64.31	34.7	15.7	34.7	14.0	30.8	14.0	40.3	17.4	32.0	14.5	40.3	17.4	65.3	29.6	40.3
	120	36.58	205' 5"	62.61	30.3	13.7	30.3	12.2	26.8	11.5	38.1	15.4	27.9	12.6	38.1	15.4	65.3	29.6	38.1
	130	39.62	199' 2"	60.70	26.7	12.1	26.7	10.6	23.4	10.6	34.1	13.6	24.4	11.6	34.1	13.6	65.3	29.6	34.1
140	42.67	192' 2"	58.57	23.6	10.7	23.6	9.3	20.6	9.3	30.1	12.1	21.5	10.3	30.1	12.1	65.3	29.6	30.1	
150	45.72	184' 4"	56.18	20.9	9.5	20.9	8.3	18.2	7.7	27.0	10.8	19.0	9.8	27.0	10.8	65.3	29.6	27.0	
160	48.77	175' 6"	53.50	18.7	8.5	18.7	7.3	16.1	6.8	24.4	9.7	16.9	9.1	24.4	9.7	65.3	29.6	24.4	

(continued)

① Capacities shown in thousands of pounds and kilograms.
 ② Measured vertically from center of boom head sheaves to ground with machine standing on tires.
 ③ Capacities for 360° swing applicable only when front center jack and rear outriggers are set in proper working position.

HC-268 lifting crane capacities

Refer to Notes page 7.

HC-268 open throat boom				Capacities on outriggers only																		
Length	Radius Feet	Angle Deg.	Boom height Feet	"AB" upper counterweight only			"A" bumper counterweights			"AB" upper and "A" bumper counterweights			"AB" upper and "AB" bumper counterweights									
				Over rear		Over side and 360° swing	Over rear		Over side and 360° swing	Over rear		Over side and 360° swing	Over rear		Over side and 360° swing							
				Lbs.	kg	Lbs.	kg	Lbs.	kg	Lbs.	kg	Lbs.	kg	Lbs.	kg							
230' (70.10 m)	170	51.82	43.5	165'	7"	50.48	16.7	7.5	14.2	6.4	34.0*	13.3	6.0	19.3	8.7	15.0	6.8	22.2*	10.0*	16.0	7.2	
	180	54.86	39.8	154'	5"	47.05	13.9	6.7	12.6	5.7	34.0*	11.7	5.3	17.4	7.8	13.3	6.0	20.1*	9.1*	14.3	6.4	
	190	57.91	35.7	141'	5"	43.11	13.4	6.0	11.2	5.0	32.3*	10.4	4.6	15.7	7.1	11.9	5.3	18.3*	8.3*	12.8	5.7	
	200	60.96	31.2	126'	4"	38.49	12.0	5.4	9.9	4.5	31.7*	9.1	4.1	14.2	6.4	10.6	4.7	16.7*	7.5*	11.4	5.1	
	210	64.01	25.9	107'	11"	32.89	10.7	4.8	8.8	3.9	27.1*	8.0	3.6	12.8	5.8	9.4	4.2	15.1*	6.8*	10.2	4.6	
	220	67.06	19.5	84'	0"	25.60	9.6	4.3	7.8	3.5	24.7*	7.1	3.1	11.6	5.2	8.4	3.2	13.6*	6.2*	9.1	4.1	
	230	70.10	9.5	45'	4"	13.82	8.6	3.9	6.9	3.1	21.1*	6.2	2.7	10.5	4.7	7.4	3.3	12.1*	5.6*	8.1	3.6	
	38	11.58	82.0	254'	11"	77.68	75.0*	34.0*	75.0*	34.0*	34.0*	75.0*	34.0*	34.0*	75.0*	34.0*	34.0*	34.0*	75.0*	34.0*	75.0*	34.0*
	40	12.19	81.5	254'	7"	77.59	75.0*	34.0*	75.0*	34.0*	34.0*	75.0*	34.0*	34.0*	75.0*	34.0*	34.0*	34.0*	75.0*	34.0*	75.0*	34.0*
	50	15.24	79.2	252'	11"	77.07	71.2*	32.3*	71.2*	32.3*	32.3*	71.2*	32.3*	32.3*	71.2*	32.3*	32.3*	32.3*	71.2*	32.3*	71.2*	32.3*
60	18.29	76.9	250'	8"	76.43	69.9*	31.7*	69.9*	31.7*	31.7*	69.9*	31.7*	31.7*	69.9*	31.7*	31.7*	31.7*	69.9*	31.7*	69.9*	31.7*	
70	21.34	74.5	248'	2"	75.65	64.7*	29.3*	59.8	27.1*	27.1*	59.8	27.1*	27.1*	59.8	27.1*	27.1*	27.1*	59.8	27.1*	59.8	27.1*	
80	24.38	72.1	245'	2"	74.73	54.5	24.7	48.9	22.1	22.1	48.9	22.1	22.1	48.9	22.1	22.1	22.1	48.9	22.1*	48.9	22.1*	
90	27.43	69.7	241'	8"	73.68	45.7	20.7	40.7	18.4	18.4	40.7	18.4	18.4	40.7	18.4	18.4	18.4	40.7	18.4*	40.7	18.4*	
100	30.48	67.2	237'	10"	72.47	38.8	17.6	35.0	15.8	15.8	35.0	15.8	15.8	35.0	15.8	15.8	15.8	35.0	15.8*	35.0	15.8*	
110	33.53	64.7	233'	4"	71.11	34.0	15.4	30.0	13.6	13.6	30.0	13.6	13.6	30.0	13.6	13.6	13.6	30.0	13.6*	30.0	13.6*	
120	36.58	62.1	228'	8"	69.59	29.5	13.4	26.0	11.7	11.7	26.0	11.7	11.7	26.0	11.7	11.7	11.7	26.0	11.7*	26.0	11.7*	
130	39.62	59.5	222'	8"	67.89	25.9	11.7	22.6	10.2	10.2	22.6	10.2	10.2	22.6	10.2	10.2	10.2	22.6	10.2*	22.6	10.2*	
140	42.67	56.8	216'	6"	66.00	22.8	10.3	19.8	8.9	8.9	19.8	8.9	8.9	19.8	8.9	8.9	8.9	19.8	8.9*	19.8	8.9*	
150	45.72	54.0	209'	7"	63.89	20.1	9.1	17.3	7.8	7.8	17.3	7.8	7.8	17.3	7.8	7.8	7.8	17.3	7.8*	17.3	7.8*	
160	48.77	51.1	202'	0"	61.56	17.8	8.0	15.2	6.9	6.9	15.2	6.9	6.9	15.2	6.9	6.9	6.9	15.2	6.9*	15.2	6.9*	
170	51.82	48.1	193'	6"	58.97	15.8	7.1	13.4	6.0	6.0	13.4	6.0	6.0	13.4	6.0	6.0	6.0	13.4	6.0*	13.4	6.0*	
180	54.86	45.0	184'	0"	56.09	14.1	6.3	11.8	5.1	5.1	11.8	5.1	5.1	11.8	5.1	5.1	5.1	11.8	5.1*	11.8	5.1*	
190	57.91	41.6	173'	5"	52.85	12.5	5.6	10.4	4.7	4.7	10.4	4.7	4.7	10.4	4.7	4.7	4.7	10.4	4.7*	10.4	4.7*	
200	60.96	38.1	151'	5"	49.20	11.1	5.0	9.1	4.1	4.1	9.1	4.1	4.1	9.1	4.1	4.1	4.1	9.1	4.1*	9.1	4.1*	
210	64.01	34.2	147'	8"	45.03	9.9	4.4	8.0	3.6	3.6	8.0	3.6	3.6	8.0	3.6	3.6	3.6	8.0	3.6*	8.0	3.6*	
220	67.06	29.8	131'	8"	40.15	8.8	3.9	6.9	2.8	2.8	6.9	2.8	2.8	6.9	2.8	2.8	2.8	6.9	2.8*	6.9	2.8*	
230	70.10	24.9	112'	5"	34.26	7.8	3.5	6.0	2.2	2.2	6.0	2.2	2.2	6.0	2.2	2.2	2.2	6.0	2.2*	6.0	2.2*	
240	73.15	18.7	87'	5"	26.63	6.8	3.0	5.1	1.9	1.9	5.1	1.9	1.9	5.1	1.9	1.9	1.9	5.1	1.9*	5.1	1.9*	
250	76.20	9.1	47'	0"	14.31	6.0	2.7	4.4	1.1	1.1	4.4	1.1	1.1	4.4	1.1	1.1	1.1	4.4	1.1*	4.4	1.1*	
270' (82.30 m)	41	12.50	81.9	274'	7"	83.71	60.5*	27.4*	60.5*	27.4*	27.4*	60.5*	27.4*	60.5*	27.4*	60.5*	27.4*	60.5*	27.4*	60.5*	27.4*	
	50	15.24	80.0	273'	2"	83.27	59.7*	27.1*	59.7*	27.1*	27.1*	59.7*	27.1*	59.7*	27.1*	59.7*	27.1*	59.7*	27.1*	59.7*	27.1*	
	60	18.29	77.8	271'	2"	82.67	58.6*	26.0*	58.6*	26.0*	26.0*	58.6*	26.0*	58.6*	26.0*	58.6*	26.0*	58.6*	26.0*	58.6*	26.0*	
	70	21.34	75.7	268'	11"	81.96	54.6*	24.8*	54.6*	24.8*	24.8*	54.6*	24.8*	54.6*	24.8*	54.6*	24.8*	54.6*	24.8*	54.6*	24.8*	
	80	24.38	73.5	266'	1"	81.12	50.5*	22.9*	48.2	21.8	21.8	48.2	21.8	21.8	48.2	21.8	21.8	21.8	48.2	21.8*	48.2	21.8*
	90	27.43	71.2	262'	11"	80.15	44.9	20.3	40.0	18.1	18.1	40.0	18.1	18.1	40.0	18.1	18.1	18.1	40.0	18.1*	40.0	18.1*
	100	30.48	69.0	259'	4"	79.04	38.1	17.2	34.3	15.5	15.5	34.3	15.5	15.5	34.3	15.5	15.5	15.5	34.3	15.5*	34.3	15.5*
	110	33.53	66.7	255'	4"	77.80	33.3	15.0	29.3	13.3	13.3	29.3	13.3	13.3	29.3	13.3	13.3	13.3	29.3	13.3*	29.3	13.3*
	120	36.58	64.0	245'	8"	76.41	28.8	13.0	25.3	11.4	11.4	25.3	11.4	11.4	25.3	11.4	11.4	11.4	25.3	11.4*	25.3	11.4*
	130	39.62	62.0	240'	7"	74.87	25.1	11.4	21.9	9.9	9.9	21.9	9.9	9.9	21.9	9.9	9.9	9.9	21.9	9.9*	21.9	9.9*
140	42.67	59.5	233'	11"	73.17	22.0	9.9	19.0	8.6	8.6	19.0	8.6	8.6	19.0	8.6	8.6	8.6	19.0	8.6*	19.0	8.6*	
150	45.72	57.1	227'	1"	71.29	19.4	8.7	16.6	7.5	7.5	16.6	7.5	7.5	16.6	7.5	7.5	7.5	16.6	7.5*	16.6	7.5*	
160	48.77	54.5	221'	7"	69.21	17.1	8.0	14.5	6.5	6.5	14.5	6.5	6.5	14.5	6.5	6.5	6.5	14.5	6.5*	14.5	6.5*	
170	51.82	51.8	219'	7"	66.93	15.1	6.8	12.7	5.7	5.7	12.7	5.7	5.7	12.7	5.7	5.7	5.7	12.7	5.7*	12.7	5.7*	
180	54.86	49.1	211'	4"	64.41	13.3	6.0	11.0	5.0	5.0	11.0	5.0	5.0	11.0	5.0	5.0	5.0	11.0	5.0*	11.0	5.0*	
190	57.91	46.2	202'	2"	61.63	11.8	5.3	9.6	4.3	4.3	9.6	4.3	4.3	9.6	4.3	4.3	4.3	9.6	4.3*	9.6	4.3*	
200	60.96	43.2	192'	1"	58.55	10.4	4.7	8.3	3.7	3.7	8.3	3.7	3.7	8.3	3.7	3.7	3.7	8.3	3.7*	8.3	3.7*	
210	64.01	40.6	180'	10"	55.12	9.1	4.1	7.2	3.2	3.2	7.2	3.2	3.2	7.2	3.2	3.2	3.2	7.2	3.2*	7.2	3.2*	
220	67.06	36.6	168'	2"	51.26	8.0	3.6	6.2	2.7	2.7	6.2	2.7	2.7	6.2	2.7	2.7	2.7	6.2	2.7*	6.2	2.7*	
230	70.10	32.8	153'	8"	46.86	7.0	3.1	5.2	2.3	2.3	5.2	2.3	2.3	5.2	2.3	2.3	2.3	5.2	2.3*	5.2	2.3*	

(continued)

⊙ Capacities shown in thousands of pounds and kilograms.
 ⊙ Measured vertically from center of boom head sheaves to ground with machine standing on tires.
 ⊙ Capacities for 360° swing applicable only when front center jack and rear outriggers are set in proper working position.

HC-268 lifting crane capacities

Refer to Notes page 7.

HC-268 open throat boom				Capacities on outriggers only														
Length	Radius Feet	Angle Deg.	Boom point height Feet	"AB" upper counterweight only				"A" upper and "A" bumper counterweights				"AB" upper and "AB" bumper counterweights						
				Over rear		Over side and 360° swing		Over rear		Over side and 360° swing		Over rear		Over side and 360° swing				
				Lbs.	kg	Lbs.	kg	Lbs.	kg	Lbs.	kg	Lbs.	kg	Lbs.	kg	Lbs.	kg	
270' (82.30 m)	240	73.15	28.7	136' 11"	41.74	19	4.4	3.7	16	7.9	3.5	4.9	2.2	9.4*	4.2*	5.6	2.5	
	250	76.20	23.9	116' 8"	35.57	16	3.6	3.0	13	6.9	3.1	4.1	1.8	8.4*	3.7*	4.8	2.1	
	260	79.25	18.0	90' 7"	27.61	13	2.9	2.3	10	5.3	2.4	3.4	1.5	7.4*	3.3*	4.0	1.8	
	270	82.30	8.8	48' 6"	14.79	10	2.3	—	—	—	—	—	—	6.5*	2.9*	3.3	1.5	
	44	13.41	81.9	294' 5"	89.73	230*	50.7*	230*	50.7*	230*	230*	50.7*	230*	50.7*	230*	50.7*	230*	230*
	50	15.24	80.7	293' 6"	89.45	226*	49.8*	226*	49.8*	226*	49.8*	226*	49.8*	226*	49.8*	226*	49.8*	226*
	60	18.28	78.7	291' 8"	88.90	222*	48.8*	222*	48.8*	222*	48.8*	222*	48.8*	222*	48.8*	222*	48.8*	222*
	70	21.33	76.7	289' 6"	88.24	205*	45.2*	205*	45.2*	205*	45.2*	205*	45.2*	205*	45.2*	205*	45.2*	205*
	80	24.38	74.6	286' 11"	87.46	190*	41.8*	190*	41.8*	190*	41.8*	190*	41.8*	190*	41.8*	190*	41.8*	190*
	90	27.43	72.5	284' 0"	86.56	175*	38.7*	175*	38.7*	175*	38.7*	175*	38.7*	175*	38.7*	175*	38.7*	175*
100	30.48	70.5	280' 7"	85.54	154*	34.0*	154*	34.0*	154*	34.0*	154*	34.0*	154*	34.0*	154*	34.0*	154*	
110	33.53	68.4	276' 11"	84.40	140*	28.6	129	28.6	129	30.9*	140*	29.8	116	30.9*	140*	30.9*	140*	
120	36.58	66.2	272' 8"	83.12	127	24.5	111	24.5	111	26.4*	120*	25.6	116	26.4*	120*	26.4*	120*	
130	39.62	64.1	268' 1"	81.71	110	21.2	95	21.2	95	26.4*	120*	22.2	100	26.4*	120*	26.4*	120*	
140	42.67	61.8	263' 0"	80.16	96	18.3	83	18.3	83	24.5	111	19.2	87	24.5*	112*	20.5	92	
150	45.72	59.6	257' 5"	78.45	84	15.9	71	15.9	71	21.6	98	16.7	75	21.6*	103*	17.9	81	
160	48.77	57.3	251' 2"	76.57	74	13.7	62	13.7	62	19.1	86	14.5	66	21.1*	96*	15.6	70	
170	51.82	54.9	244' 6"	74.52	65	11.9	54	11.9	54	16.9	76	12.7	57	19.2*	87*	13.7	62	
180	54.86	52.4	237' 1"	72.28	57	10.3	46	10.3	46	15.0	68	11.0	49	17.2*	77*	11.9	54	
190	57.91	49.9	229' 1"	69.83	49	8.9	40	8.9	40	13.3	60	9.5	43	15.3*	69*	10.4	47	
200	60.96	47.3	220' 4"	67.14	43	7.6	34	7.6	34	11.8	53	8.2	37	13.7*	61*	9.1	41	
210	64.01	44.5	210' 7"	64.18	37	6.4	29	6.4	29	10.4	47	7.0	31	12.2*	55*	7.8	35	
220	67.06	41.6	199' 11"	60.92	32	5.4	24	5.4	24	9.2	41	6.0	27	10.8*	49*	6.7	30	
230	70.10	38.5	188' 0"	57.30	28	4.4	20	4.4	20	8.1	36	5.0	22	9.6*	43*	5.7	25	
240	73.15	35.2	174' 8"	52.23	23	3.6	16	3.6	16	7.1	32	4.1	18	8.4*	38*	4.8	21	
250	76.20	31.7	159' 6"	48.62	20	2.8	12	2.8	12	6.1	27	3.3	15	7.4*	33*	4.0	18	
260	79.25	27.7	142' 0"	43.27	16	2.1	7	2.1	7	5.4	24	2.6	11	6.4*	29*	3.2	14	
270	82.30	23.1	120' 11"	36.84	13	1.6	—	—	—	4.5	20	2.0	—	5.6*	25*	2.5	11	
280	85.34	17.3	93' 8"	28.55	10	—	—	—	—	3.8	17	—	—	4.7*	21*	—	—	
290	88.39	9.5	50' 0"	15.25	—	—	—	—	—	—	—	—	—	4.0*	1.8*	—	—	
310' (94.48 m)	47	14.33	81.9	314' 2"	95.76	—	—	—	—	—	—	—	—	42.5*	19.3*	42.5*	19.3*	
	50	15.24	81.3	313' 8"	95.63	—	—	—	—	—	—	—	—	42.2*	19.1*	42.2*	19.1*	
	60	18.28	79.4	312' 0"	95.11	—	—	—	—	—	—	—	—	41.4*	18.8*	41.4*	18.8*	
	70	21.33	77.5	310' 0"	94.49	—	—	—	—	—	—	—	—	38.3*	17.4*	38.3*	17.4*	
	80	24.38	75.6	307' 7"	93.76	—	—	—	—	—	—	—	—	34.5*	15.6*	34.5*	15.6*	
	90	27.43	73.7	304' 11"	92.93	—	—	—	—	—	—	—	—	30.4*	13.8*	30.4*	13.8*	
	100	30.48	71.8	301' 10"	91.98	—	—	—	—	—	—	—	—	28.1*	12.7*	28.1*	12.7*	
	110	33.53	69.8	298' 4"	90.92	—	—	—	—	—	—	—	—	26.0*	11.8*	26.0*	11.8*	
	120	36.58	67.9	294' 5"	89.74	—	—	—	—	—	—	—	—	24.1*	10.9*	24.1*	10.9*	
	130	39.62	65.8	290' 2"	88.44	—	—	—	—	—	—	—	—	22.3*	10.1*	22.3*	10.1*	
140	42.67	63.8	285' 6"	87.01	—	—	—	—	—	—	—	—	20.6*	9.3*	20.6*	9.3*		
150	45.72	61.7	280' 4"	85.44	—	—	—	—	—	—	—	—	19.2*	8.7*	19.2*	8.7*		
160	48.77	59.6	274' 8"	83.73	—	—	—	—	—	—	—	—	17.7*	8.0*	17.7*	8.0*		
170	51.82	57.4	268' 7"	81.86	—	—	—	—	—	—	—	—	16.0*	7.2*	16.0*	7.2*		
180	54.86	55.2	261' 11"	79.83	—	—	—	—	—	—	—	—	14.2	6.4	14.2	6.4		
190	57.91	52.9	254' 8"	77.62	—	—	—	—	—	—	—	—	12.5	5.6	12.5	5.6		
200	60.96	50.6	246' 10"	75.22	—	—	—	—	—	—	—	—	11.0	4.9	11.0	4.9		
210	64.01	48.1	238' 2"	72.60	—	—	—	—	—	—	—	—	9.6	4.3	9.6	4.3		
220	67.06	45.6	228' 10"	69.75	—	—	—	—	—	—	—	—	8.4	3.8	8.4	3.8		
230	70.10	43.0	218' 7"	66.63	—	—	—	—	—	—	—	—	7.3	3.3	7.3	3.3		
240	73.15	40.2	207' 4"	63.19	—	—	—	—	—	—	—	—	6.3	2.8	6.3	2.8		
250	76.20	37.2	194' 10"	59.39	—	—	—	—	—	—	—	—	5.3	2.4	5.3	2.4		

(continued)

① Capacities shown in thousands of pounds and kilograms.

② Measured vertically from center of boom head sheaves to ground with machine standing on tires.

③ Capacities for 360° swing applicable only when front center jack and front and rear outriggers are set in proper working position.

HC-268 lifting crane capacities

HC-268 open throat boom			Capacities on outriggers only												
Length	Radius		Angle	Boom point height	"AB" upper counterweight only		"A" upper and "A" bumper counterweights		"AB" upper and "AB" bumper counterweights		Over side and 360° swing		Over side and 360° swing		
	Feet	Meters			Lbs.	Kg	Lbs.	Kg	Lbs.	Kg	Lbs.	Kg	Lbs.	Kg	Lbs.
310' (94.48 m)	260	79.25	34.1	180' 11"	55.14	Over rear	4.5	2.0	5.5*	2.4*	Over rear	2.4	1.0	2.4	
	270	82.30	30.6	165' 1"	50.32	Over side and 360° swing	3.7	1.6	4.6*	2.0*	Over side and 360° swing	—	—	—	
	280	85.34	26.7	146' 10"	44.75	Over rear	3.0	1.3	3.8*	1.7*	Over rear	—	—	—	
	290	88.39	22.3	124' 11"	38.06	Over side and 360° swing	2.3	1.0	3.0*	1.3*	Over side and 360° swing	—	—	—	
	300	91.44	16.8	96' 8"	29.47	Over rear	—	—	2.3*	1.0*	Over rear	—	—	—	
	310	94.48	8.2	51' 6"	15.69	Over side and 360° swing	—	—	—	—	Over side and 360° swing	—	—	—	
	330' (100.58 m)	50	15.24	81.8	334' 0"	101.79	Over rear	—	—	32.9*	14.9*	Over rear	14.9*	32.9*	14.9*
		60	18.28	80.1	332' 5"	101.30	Over side and 360° swing	—	—	32.0*	14.5*	Over side and 360° swing	—	—	—
		70	21.33	78.3	330' 6"	100.72	Over rear	—	—	29.6*	13.4*	Over rear	13.4*	29.6*	13.4*
		80	24.38	76.5	328' 2"	100.04	Over side and 360° swing	—	—	27.5*	12.5*	Over side and 360° swing	—	—	—
90		27.43	74.7	325' 8"	99.26	Over rear	—	—	25.5*	11.6*	Over rear	11.6*	25.5*	11.6*	
100		30.48	72.9	322' 10"	98.38	Over side and 360° swing	—	—	23.6*	10.7*	Over side and 360° swing	—	—	—	
110		33.53	71.1	319' 6"	97.39	Over rear	—	—	21.6*	9.8*	Over rear	9.8*	21.6*	9.8*	
120		36.58	69.3	315' 11"	96.29	Over side and 360° swing	—	—	20.0*	9.1*	Over side and 360° swing	—	—	—	
130		39.62	67.4	311' 9"	95.08	Over rear	—	—	18.5*	8.4*	Over rear	8.4*	18.5*	8.4*	
140		42.67	65.5	307' 7"	93.75	Over side and 360° swing	—	—	17.1*	7.8*	Over side and 360° swing	—	—	—	
330' (100.58 m)	150	45.72	63.6	302' 10"	92.30	Over rear	—	—	15.8*	7.2*	Over rear	7.2*	15.8*	7.2*	
	160	48.77	61.6	297' 7"	90.72	Over side and 360° swing	—	—	14.7*	6.7*	Over side and 360° swing	—	—	—	
	170	51.82	59.6	292' 0"	89.01	Over rear	—	—	13.7*	6.2*	Over rear	6.2*	13.7*	6.2*	
	180	54.86	57.6	285' 11"	87.15	Over side and 360° swing	—	—	12.7*	5.8*	Over side and 360° swing	—	—	—	
	190	57.91	55.5	279' 4"	85.13	Over rear	—	—	11.8*	5.4*	Over rear	5.4*	11.8*	5.4*	
	200	60.96	53.4	272' 2"	82.96	Over side and 360° swing	—	—	11.0*	5.0*	Over side and 360° swing	—	—	—	
	210	64.01	51.2	264' 5"	80.60	Over rear	—	—	10.2*	4.6*	Over rear	4.6*	10.2*	4.6*	
	220	67.06	48.9	256' 1"	78.05	Over side and 360° swing	—	—	8.9*	4.0*	Over side and 360° swing	—	—	—	
	230	70.10	46.6	247' 0"	75.28	Over rear	—	—	7.6*	3.4*	Over rear	3.4*	7.6*	3.4*	
	240	73.15	44.1	237' 1"	72.27	Over side and 360° swing	—	—	6.5*	2.9*	Over side and 360° swing	—	—	—	
250	76.20	41.6	226' 4"	68.98	Over rear	—	—	5.4*	2.4*	Over rear	2.4*	5.4*	2.4*		
260	79.25	38.9	214' 6"	65.38	Over side and 360° swing	—	—	4.5*	2.0*	Over side and 360° swing	—	—	—		
270	82.30	36.0	210' 6"	61.40	Over rear	—	—	3.6*	1.6*	Over rear	1.6*	3.6*	1.6*		
280	85.34	33.0	196' 11"	56.97	Over side and 360° swing	—	—	2.8*	1.2*	Over side and 360° swing	—	—	—		
290	88.39	29.6	170' 6"	51.96	Over rear	—	—	2.0*	0.9*	Over rear	0.9*	2.0*	0.9*		

(continued)

- ① Capacities shown in thousands of pounds and kilograms.
- ② Measured vertically from center of boom head sheaves to ground with machine standing on tires.
- ③ Capacities for 360° swing applicable only when front center jack and front and rear outriggers are set in proper working position.

Notes — lifting crane capacities

1. The capacities included in this chart are the maximum allowable, and are based on machine standing level on firm supporting surface under ideal job conditions. Capacities are based on 85% of minimum tipping loads unless marked with an asterisk (*).
 - a. Asterisk indicates capacities are based on factors other than those which would cause a tipping condition.
2. Capacities are based on freely suspended loads and make no allowance for such factors as the effect of wind, supporting surface conditions, inflation of tires, and operating speeds. Operator must reduce load ratings accordingly to take such condition into account. Deduction from rated capacities must be made for weight of jib, hook block, ball/hook, sling, spreader bar or other suspended gear.
3. Boom midpoint suspension pendants required for boom lengths exceeding 240' (73.15 m).
4. For lifting 500,000 lb. (226,800 kg) capacity, 14-part load hoist line (1-1/8" - 29mm - diameter, type "N" wire rope) is required.
5. Jib cannot be used on boom longer than 300' (91.44 m).
6. Refer to charts page 1 when rigging machine with boom and boom plus jib.
7. Machine equipped with "A" or "AB" upper counterweight — do not swing over side until outriggers have been set.
8. Boom live mast must be used for all capacities on this chart.
9. Boom live mast may be used as short boom for machine assembly/disassembly only — it is not to be used for general lift crane service.
 - a. Maximum lifting capacity of mast is 85,000 lbs. (38,556 kg) from 12' (3.66 m) to 28' (8.53 m) maximum radius with machine on outriggers (front and rear).
 - b. Minimum 3-part load hoist line — 1" (25 mm) or 1-1/8" (29 mm) diameter, Type "N" wire rope — off rear main operating drum only — required to lift 85,000 lbs. (38,556 kg).
10. Least stable position is over side.
11. When handling loads on main load hoist line, with jib mounted on boom, reduce rated boom capacities as follows to compensate for jib weights —
 - 30' (9.14 m) — 2,600 lbs. (1,179 kg)
 - 50' (15.24 m) — 3,300 lbs. (1,496 kg)
 - 70' (21.34 m) — 4,000 lbs. (1,814 kg)
 - 90' (27.43 m) — 4,700 lbs. (2,132 kg)
12. Refer to operator's manual for boom make up and counterweighting instructions.
13. When making lift on outriggers, machine must be level and supported on fully extended and set outriggers with tires free of supporting surface.
14. Capacities apply only to the machine as originally manufactured and normally equipped by Link-Belt Construction Equipment Company.

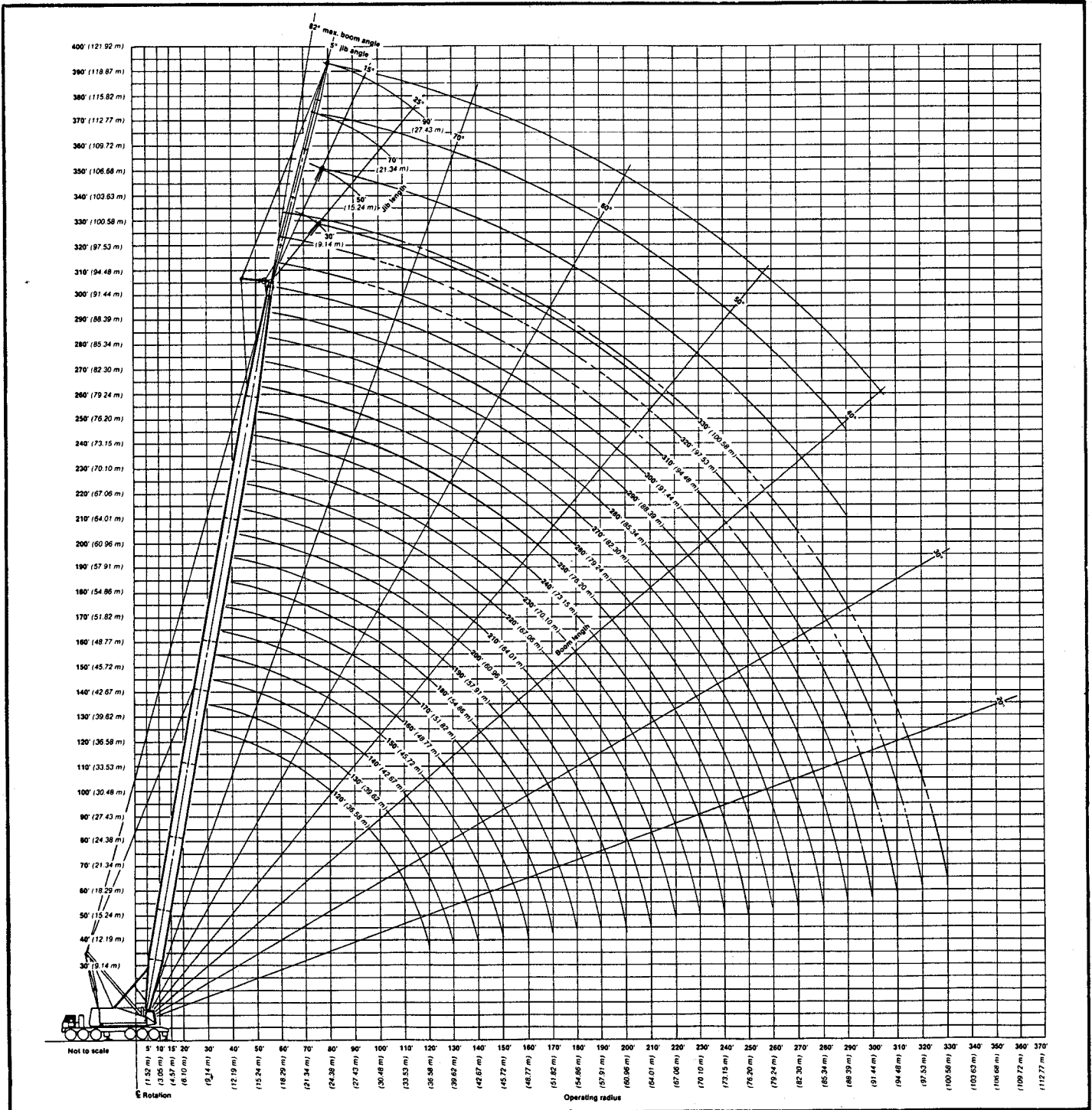
HC-268 lifting crane capacities — open throat boom

Boom — tubular; 80" (2.03 m) wide, 68" (1.73 m) deep with open throat top section, 1 1/4" (32 mm) diameter boom pendants, boom live mast, and boom midpoint suspension pendants as required.

Jib — tubular; 32" (0.81 m) wide, 24" (0.61 m) deep.

Mounting — rubber tire mobile base: Link-Belt; 12 x 6 drive, 288" (7.32 m) wheelbase, 11' 10" (3.61 m) wide.

Counterweights — Refer to charts page 1.



© Link-Belt is a registered trademark. Copyright 1994.
We are constantly improving our products and therefore reserve the right to change designs and specifications.
Link-Belt Construction Equipment Company Lexington, Kentucky
A unit of Sumitomo Construction Machinery Co., Ltd.

GENERAL INFORMATION ONLY