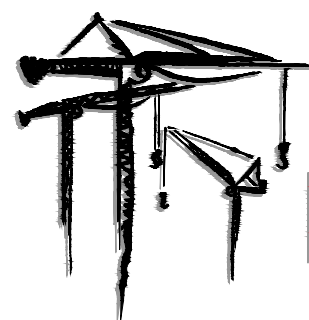


LEWIS

CRANE  HOIST



• Tower Crane • Hoist • Mobile •
Rentals and Sales



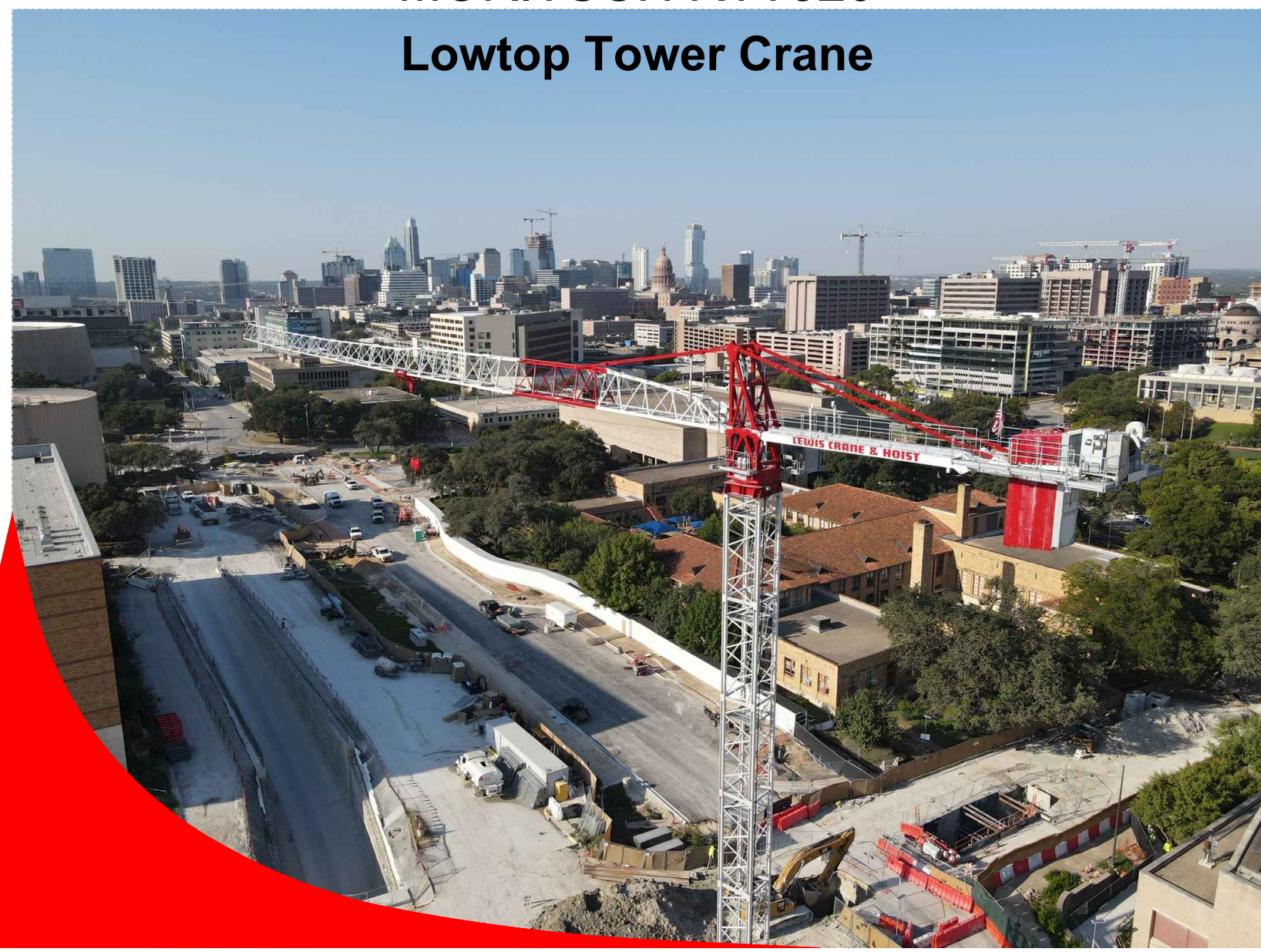
LEWIS

CRANE  HOIST

2214 HWY. 1187 BLDG. 1
Mansfield, TX 76063
817-225-1090

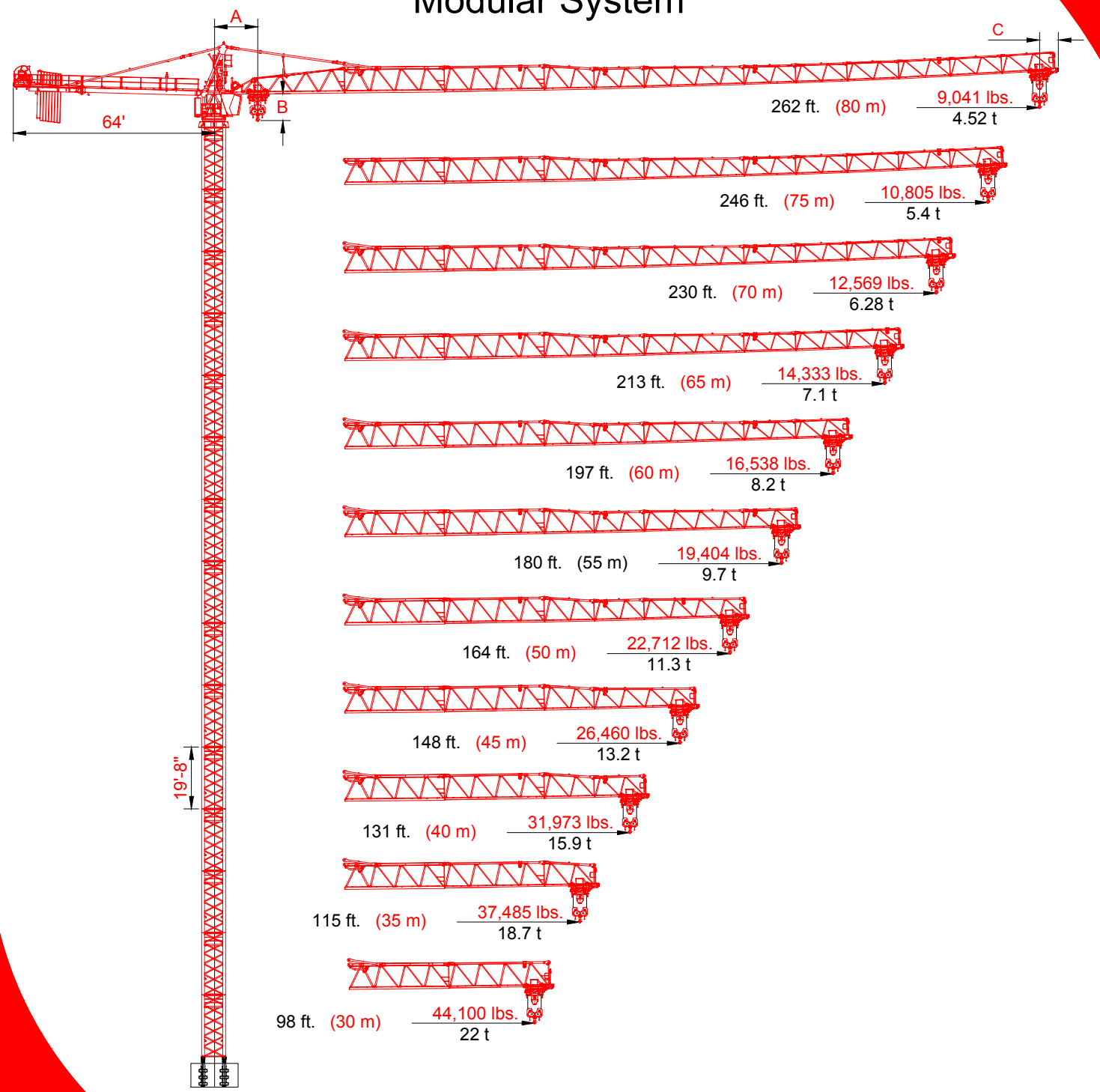
"Your Turnkey Crane and Hoist Provider"

MORITSCH RTT520
Lowtop Tower Crane





**Topless Tower Crane
Modular System**



A =Centerline crane to minimum 2 part hook radius 8'-6"
 B =Bottom of jib to hook block 6'-7"
 C =Add for jib tip radius 6'-7"

Line Speeds and Power Requirements

Power Requirements
 148 hp (110 kW)

2 - Part Line	Line Speed	Capacity
26,460 lbs. 12 t	459 ft/min 140 m/min	2,200 lbs. 1.1 t
	196 ft/min 60 m/min	10,600 lbs. 5.3 t
	141 ft/min 43 m/min	15,600 lbs. 7.8 t
	98 ft/min 30 m/min	26,460 lbs. 12 t

4 - Part Line	Line Speed	Capacity
44,100 lbs. 24 t	230 ft/min 70 m/min	4,400 lbs. 2.2 t
	95 ft/min 29 m/min	22,000 lbs. 11 t
	69 ft/min 21 m/min	32,000 lbs. 16 t
	49 ft/min 15 m/min	48,000 lbs. 24 t

Unit	Horsepower	Kilowatts	Speed
TROLLEY	10	11	0 - 328 ft/min 0 - 100 m/min
SWING	4 x 10 hp	4 x 11	0 - 0.8 rpm

Power Requirements
 480 volts, 3 phase, 60 Hz, 300 amp service

Additional Equipment and Services Available

- Moritsch Tower Cranes
- Comedil Tower Cranes
- Peiner Tower Cranes
- Sun Tower Cranes
- Comansa Tower Cranes
- Timberland Derricks
- Hardrock Elevators
- Hercules Elevators
- Specialized Rigging
- Technical Services
- Third Party Inspections
- Parts and Repair Services
- Erection and Dismantlement Services

*Due to product improvement specifications are subject to change without notice.

EQUIPMENT RENTALS - SALES- 24 HOUR SERVICE - YARD STORAGE & TRANSFERS - REGIONAL SERVICE

2214 FM 1187, SUITE 1
 MANSFIELD, TX 76063
 OFFICE: 817-225-1090 FAX: 817-225-1095

WWW.LEWISCRANEANDHOIST.COM

Crane Component List

MORITSCH RTT520

Radius and Capacities

MORITSCH RTT520

DESCRIPTION	DIMENSION L x W x H	WEIGHT
Tower Section HR23-22.6	7'-6" x 7'-6" x 20'-0" 2.29m x 2.28m x 6m	10,695 lbs 4850 kg
Tower Section HR23-26.6	7'-11" x 7'-11" x 20'-0" 2.34m x 2.34m x 6m	13,825 lbs 6270 kg
Anchors (4x) HR23-22.6	2'-5" x 2'-5" x 6'-5" .60m x .60m x 2.02m	1,080 lbs 490 kg
Anchors (4x) HR23-26.6	2'-5" x 2'-5" x 8'-5" .60m x .60m x 2.6m	1,830 lbs 830 kg
Top Climbing Unit Complete	38'-2" x 10'-6" x 10'-6" 11.6m x 3.2m x 3.2m	21,054 lbs 9550 kg
Counterjib	38'-11" x 7'-4" x 6'-4" 11.8m x 2.23m x 1.93m	20,128 lbs 9130 kg
Hoist Block	4'-10x1'-8"x 6'-8" 1.46m x 0.5 m x 2.02m	2,470 lbs. 1120 kg
Turntable	10'-0" x 7'-8" x 6'-8" 2.98m x 2.32m x 2.03m	24,251lbs. 11000 kg
Cathead	8'-10" x 7'-1" x 22'-4" 2.67m x 2.11m x 6.8m	19,841lbs. 9000 kg
Cabin	16'-4" x 7'-8" x 8'-2" 4.9m x 2.35m x 2.48m	5,732 lbs. 2600 kg
Hoisting Unit	16'-4" x 7'-8" x 8'-2" 4.9m x 2.35m x 2.48m	5,732 lbs. 2600 kg
Jib Section ①	38'-9" x 7'-1" x 8'-7" 11.75m x 2.m x 2.61m	10,648 lbs. 4830 kg
Jib Section ②	32'-11" x 6'-8" x 8'-5" 10m x 1.85m x 2.48m	9,237 lbs. 4190 kg
Jib Section ③	32'-11" x 6'-1" x 8'-2" 10m x 1.85m x 2.49m	7,121 lbs. 3230 kg
Jib Section ④	17'-1" x 6'-1" x 8'-2" 5.1m x 1.85m x 2.48m	3,263 lbs. 1480 kg
Jib Section ⑤	17'-1" x 6'-1" x 7'-0" 5.1m x 1.85m x 2.11m	3,153 lbs. 1430 kg
Jib Section ⑥	32'-10" x 6'-1" x 6'-10" 10m x 1.85m x 2.08m	4,740 lbs. 2150 kg
Jib Section ⑦	17'-6" x 6'-1" x 6'-2" 4.9m x 1.85m x 1.8m	2,039 lbs. 925 kg

DESCRIPTION	DIMENSION L x W x H	WEIGHT
Jib Section ⑧	17'-3" x 6'-1" x 6'-2" 5.2m x 1.85m x 1.86m	1,676 lbs. 760 kg
Jib Section ⑨	17'-2" x 6'-1" x 6'-2" 5.1m x 1.85m x 1.86m	1,422 lbs. 645 kg
Jib Section ⑩	17'-1" x 6'-1" x 6'-2" 5.2m x 1.85m x 1.86m	1,180 lbs. 540 kg
Jib Section ⑪	17'-1" x 6'-1" x 6'-2" 5.2m x 1.85m x 1.86m	1,124 lbs. 510 kg
Jib Section ⑬	17'-0" x 6'-1" x 8'-4" 5.18m x 1.85m x 2.55m	4,696 lbs. 2130 kg
Jib Tip	7'-11" x 6'-11" x 8'-6" 5.19m x 1.85m x 1.86m	672 lbs. 305 kg
Counterweights A B C	4'-7" x 11" x 15'-7" 1.4m x .28m x 4.75m	A- 12,345 B- 12,345 C- 9,215
262 ft. Jib Assembly (80m) ①②③④⑤⑥⑦⑧⑨⑩⑪ + Tip	265' x 6'-1" x 8'-4" 80.8m x 1.85m x 1.86m	63,053 lbs 28600 kg
246 ft. Jib Assembly (75m) ①②③④⑤⑥⑦⑧⑨⑩ + Tip	248' x 6'-1 x 6'-2" 78.8m x 1.85m x 1.86m	61,950 lbs 28100 kg
230 ft. Jib Assembly (70m) ①②③④⑤⑥⑦⑧⑨ + Tip	231' x 6'-1" x 6'-2" 70.4m x 1.85m x 1.86m	60,627 lbs 27499 kg
213 ft. Jib Assembly (65m) ①②③④⑤⑥⑦⑧ + Tip	215' x 6'-1" x 6'-2" 65.5m x 1.85m x 1.56m	59,305 lbs 26900 kg
197 ft. Jib Assembly (60m) ①②③④⑤⑥⑦ + Tip	199' x 6'-1" x 6'-2" 60.6m x 1.85m x 1.86m	57,541 lbs 26100 kg
180 ft. Jib Assembly (55m) ①②③④⑤⑥ + Tip	183' x 6'-1" x 6'-2" 55.7m x 1.85m x 1.86m	55,557 lbs 25200 kg
164 ft. Jib Assembly (50m) ①②③④⑤ + Tip	167' x 6'-1" x 6'-2" 50.9m x 1.85m x 1.86m	52,470 lbs 23800 kg
148 ft. Jib Assembly (45m) ①②③④⑥ + Tip	151' x 6'-1" x 6'-2" 46m x 1.85m x 1.86m	50,707 lbs 23000 kg
131 ft. Jib Assembly (40m) ①②③④ + Tip	135' x 6'-1" x 6'-2" 41.1m x 1.85m x 1.86m	47,620 lbs 21600 kg
115 ft. Jib Assembly (35m) ①②③ + Tip	119' x 6'-1" x 6'-2" 36m x 1.85m x 1.86m	44,313 lbs 20100 kg
98 ft. Jib Assembly (30m) ①②③ + Tip	103' x 6'-1" x 6'-2" 31.3m x 1.85m x 1.86m	39,684 lbs 18000 kg

NOTE: Weights and dimensions are approximate. Weigh components before lifting.

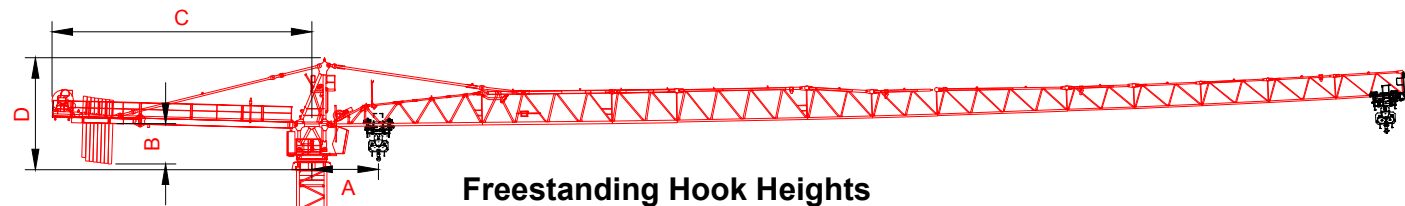
- Jib assembly doesn't include trolley, pulley support and load block
- Counter-Jib excludes wire rope and auxiliary-jib
- Turntable complete does not include platform
- Cathead includes cabin, tails, platform and ladder
- Telescoping cage does not include platform, ladder and hydraulic pump

Radius and capacity (meter and tons)		2-Part - line											ft	
Hook Radius		98	115	131	148	164	180	197	213	230	246	262		
262 ft	26,460 lbs	-	115 ft	26,460	26,460	22,666	19,601	17,164	15,181	13,535	12,147	10,961	9,949	9,036
246 ft	26,460 lbs	-	122 ft	26,460	26,460	22,413	21,065	18,478	16,373	14,625	13,152	11,893	10,805	
230 ft	26,460 lbs	-	126 ft	26,460	26,460	25,346	22,001	19,341	17,175	15,378	13,863	12,596		
213 ft	26,460 lbs	-	129 ft	26,460	26,460	26,118	22,864	19,954	17,732	15,888	14,333			
197 ft	26,460 lbs	-	133 ft	26,460	26,460	26,460	26,481	20,692	18,422	16,538				
180 ft	26,460 lbs	-	139 ft	26,460	26,460	26,460	24,688	21,775	19,404					
164 ft	26,460 lbs	-	143 ft	26,460	26,460	26,460	25,706	22,712						
148 ft	26,460 lbs	-	148 ft	26,460	26,460	26,460	26,460							
131 ft	26,460 lbs	-	131 ft	26,460	26,460	26,460								
115 ft	26,460 lbs	-	114 ft	26,460	26,460									
98 ft	26,460 lbs	-	98 ft	26,460										

Radius and capacity (meter and tons)		4-Part - line											ft	
Hook Radius		98	115	131	148	164	180	197	213	230	246	262		
262 ft	52,910 lbs	-	64 ft	32,134	26,594	22,482	19,310	16,788	14,735	13,031	11,594	10,367	9,306	8,379
246 ft	52,910 lbs	-	68 ft	34,281	28,423	24,075	20,721	18,054	15,884	14,082	12,563	11,265	10,143	
230 ft	52,910 lbs	-	70 ft	35,509	29,501	25,043	21,63	18,896	16,642	14,796	13,238	11,907		
213 ft	52,910 lbs	-	71 ft	36,468	30,319	25,755	22,234	19,435	17,156	15,265	13,671			
197 ft	52,910 lbs	-	73 ft	37,485	31,248	26,567	22,978	20,126	17,803	15,876				
180 ft	52,910 lbs	-	76 ft	39,241	32,713	27,870	24,132	21,161	18,743					
164 ft	52,910 lbs	-	81 ft	40,594	33,899	28,931	25,097	22,050						
148 ft	52,910 lbs	-	81 ft	42,667	35,665	30,469	24,462							
131 ft	39,682 lbs	-	84 ft	44,616	37,359	31,973								
115 ft	52,910 lbs	-	85 ft	44,765	37,485									
98 ft	52,910 lbs	-	83 ft	44,100										

Radius and capacity (meter and tons)		2-Part - line											m	
Hook Radius		30	35	40	45	50	55	60	65	70	75	80		
80 m	12 t	-	35.20 m	12.0	12.0	10.28	8.89	7.78	6.88	6.14	5.51	4.97	4.51	4.10
75 m	12 t	-	37.29 m	12.0	12.0	11.03	9.55	8.38	7.43	6.63	5.96	5.39	4.90	
70 m	12 t	-	38.58 m	12.0	12.0	11.49	9.98	8.77	7.79	6.97	6.29	5.70		
65 m	12 t	-	39.56 m	12.0	12.0	11.29	10.29	9.05	8.04	7.21	6.50			
60 m	12 t	-	40.68 m	12.0	12.0	12.0	10.65	9.38	8.35	7.5				
55 m	12 t	-	42.43 m	12.0	12.0	12.0	11.20	9.88	8.80					
50 m	12 t	-	43.90 m	12.0	12.0	12.0	11.66	10.30						
45 m	12 t	-	45.00 m	12.0	12.0	12.0	12.0							
40 m	12 t	-	40.00 m	12.0	12.0	12.0								
35 m	12 t	-	35.00 m	12.0	12.0									
30 m	12 t	-	30.00 m	12.0										

Radius and capacity (meter and tons)		4-Part - line											m	
Hook Radius		30	35	40	45	50	55	60	65	70	75	80		
80 m	24 t	-	19.73 m	14.57	12.06	10.20	8.76	7.61	6.68	5.91	5.26	4.70	4.22	3.80
75 m	24 t	-	20.79 m	15.55	12.89	10.92	9.40	8.19	7.20	6.39	5.70	5.11	4.60	
70 m	24 t	-	21.36 m	16.10	13.38	11.36	9.80	8.56	7.55	6.71	6.00	5.40		
65 m	24 t	-	21.84 m	16.54	13.75	11.68	10.08	8.81	7.78	6.92	6.20			
60 m	24 t	-	23.31 m	17.00	14.06	12.05	10.42	9.13	8.07	7.20				
55 m	24 t	-	23.19 m	17.80	15.37	12.64	10.94	9.60	8.50					
50 m	24 t	-	23.84 m	18.41	15.37	13.12	11.38	10.00						
45 m	24 t	-	24.87 m	19.35	16.17	13.82	12.00							
40 m	24 t	-	25.83 m	20.23	16.94	14.50								
35 m	24 t	-	25.91 m	20.30	17.00									
30 m	24 t	-	25.57 m	20.00										



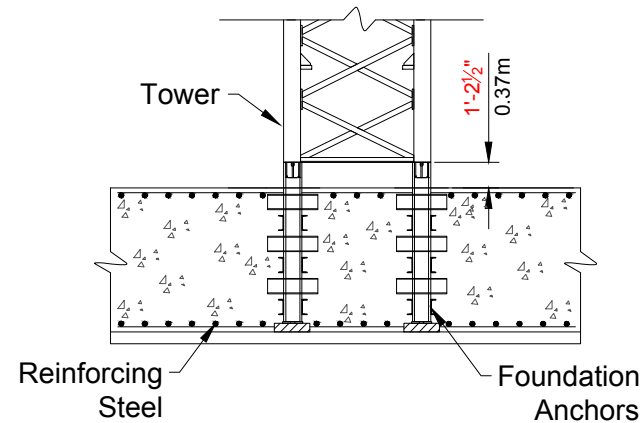
Freestanding Hook Heights on Concrete Foundation

Towers	Feet	Meters
1	23.0	6
2	42.6	12
3	62.4	18
4	82.0	24
5	101.7	30
6	121.4	36
7	141.1	42
8	160.8	48
9	180.5	54
10	200.1	60
11	219.8	66
*12	239.5	72
*13	259.2	78
*14	278.9	84

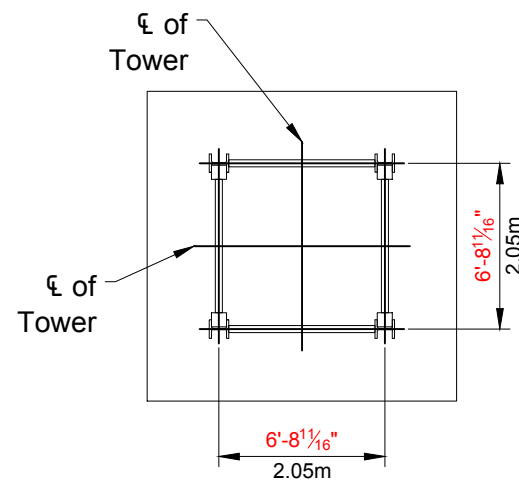
For greater freestanding heights or hook heights contact Lewis Crane and Hoist
 * Denotes big tower underneath to accomplish heights

Note:
 Hook heights may be limited by geographic location

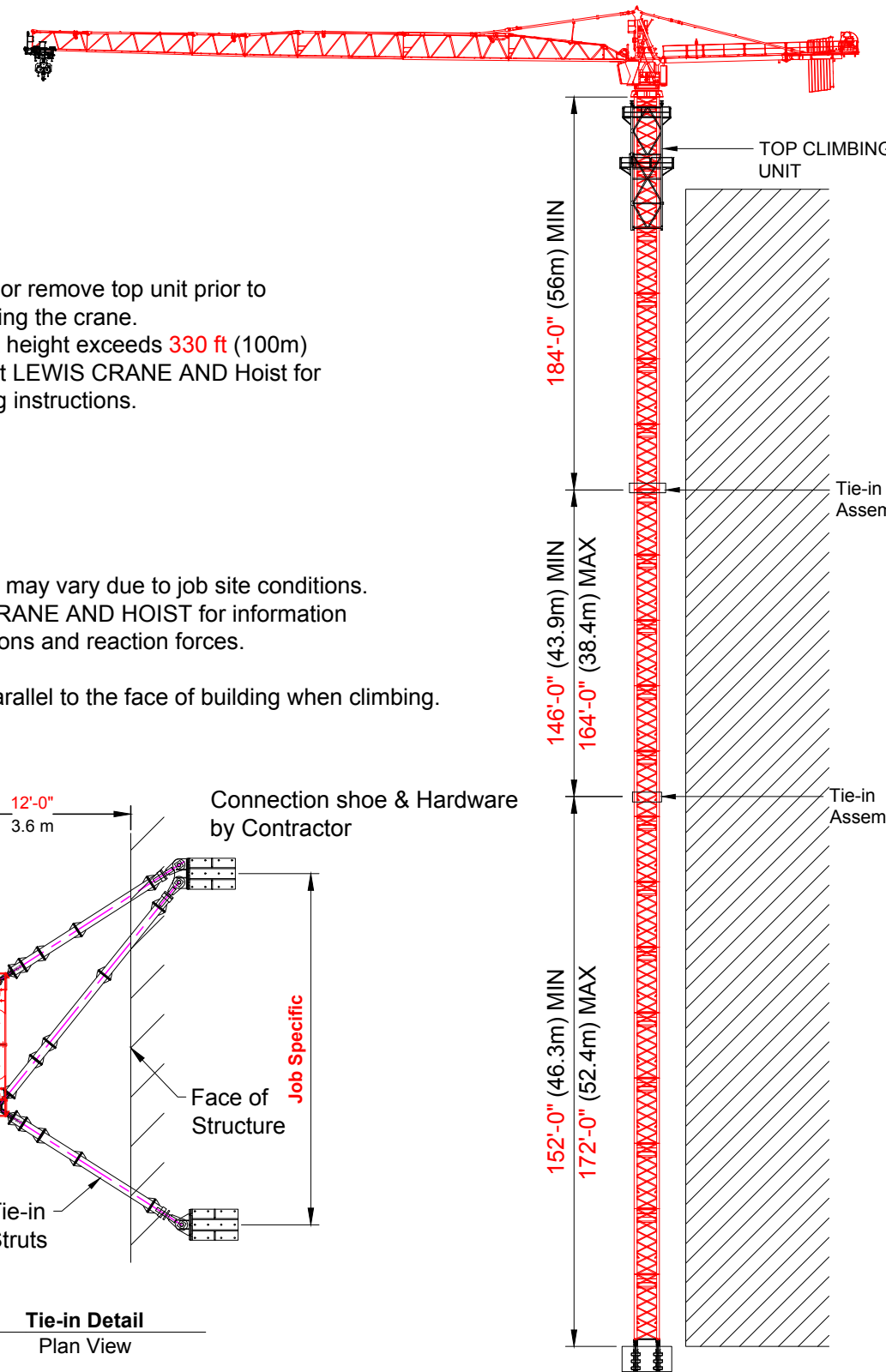
A = Height of telescoping unit 30'-8" 11.6m
 B = Height of complete slewing unit 10'-3" 3.1m
 C = Height of jib section 8'-1" 2.46m



Elevation View of Anchors
 *Dimensions pertaining to 22.6 anchor



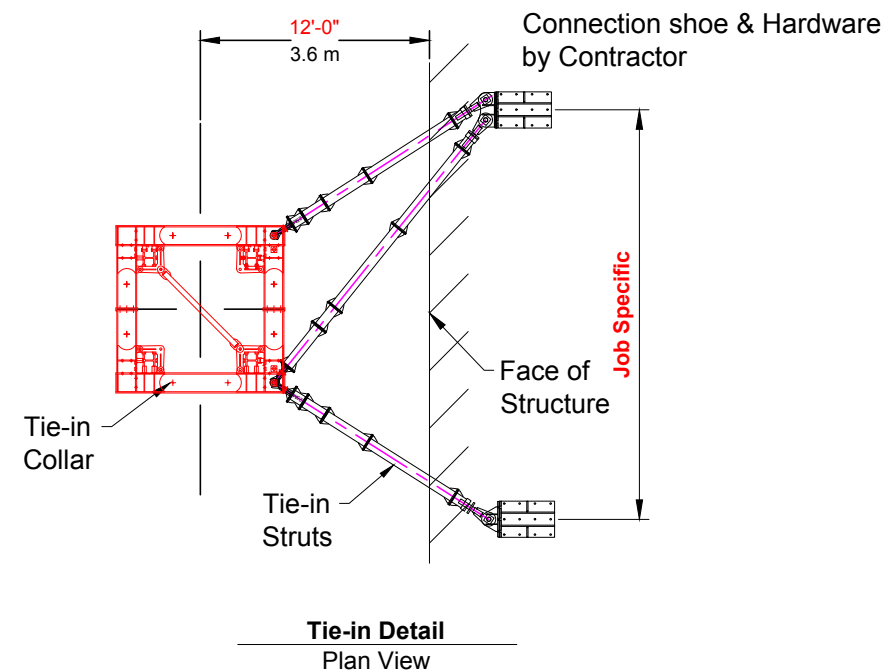
Plan View of Anchors



NOTE:
 1. Lower or remove top unit prior to operating the crane.
 2. If hook height exceeds 330 ft (100m) contact LEWIS CRANE AND Hoist for bracing instructions.

NOTE:
 Tie-in installations may vary due to job site conditions. Contact LEWIS CRANE AND HOIST for information regarding dimensions and reaction forces.

The jib must be parallel to the face of building when climbing.



Tie-in Detail Plan View

TOP CLIMBING