

• Tower Crane • Hoist • Mobile •  
Rentals and Sales



*"Your Turnkey Crane and Hoist Provider"*

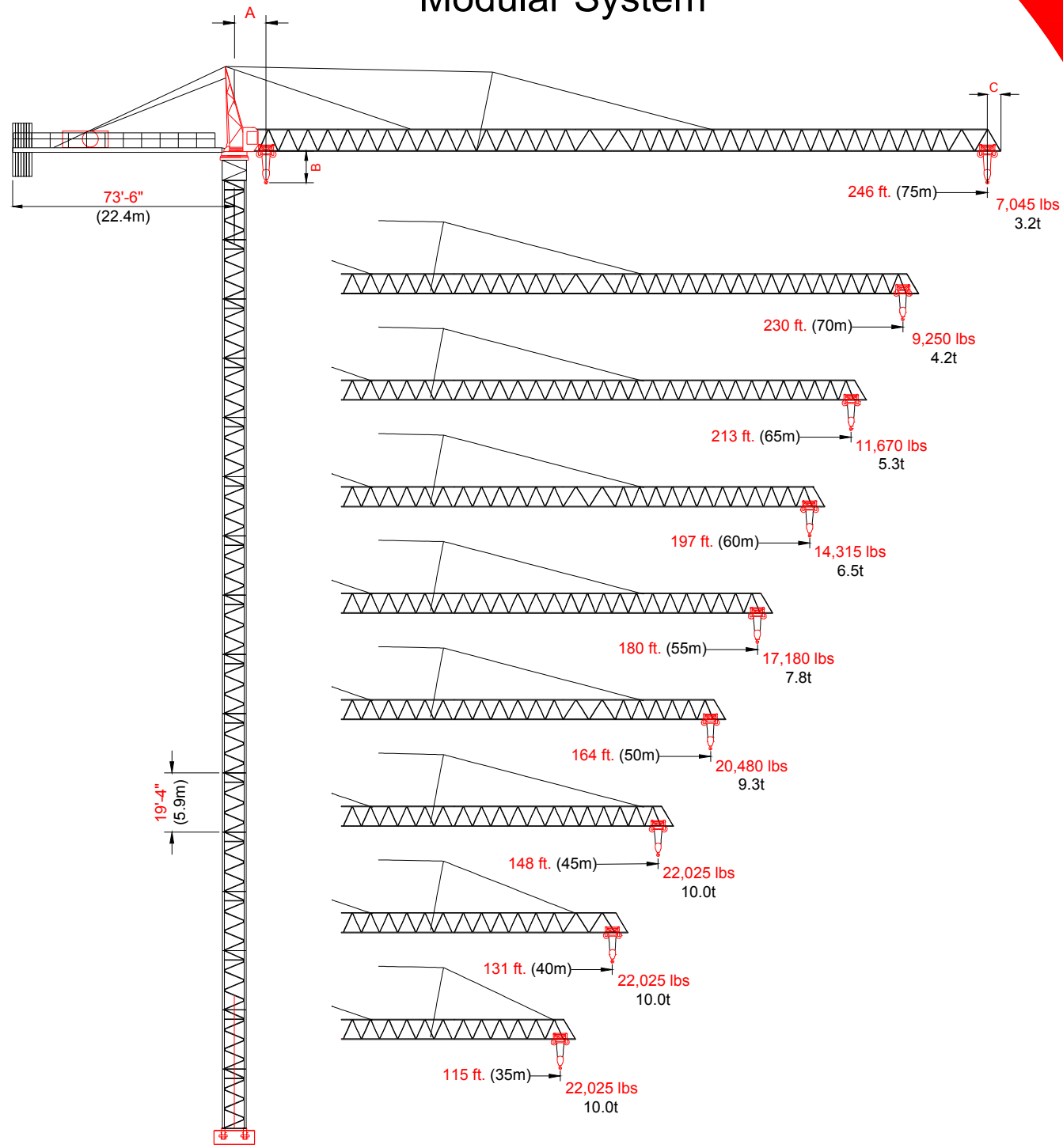


PEINER SK-415





Tower Crane  
Modular System



A = Centerline crane to minimum 2-part hook radius 9'-10" (3.0m)  
 B = Bottom of jib to hook block 9'-10" (3.0m)  
 C = Add for jib tip radius 4'-11" (1.5m) 2-part

Line Speeds and Power Requirements

**Hoist Unit**  
108 hp 79 kw

2 - Part Line	Line Speed	Capacity
Gear 1	110 ft/min 34 m/min	22,000 lbs 10.0 t
Gear 2	177 ft/min 54 m/min	14,700 lbs 7.1 t
Gear 3	275 ft/min 84 m/min	9,300 lbs 4.2 t
Gear 4	440 ft/min 134 m/min	5,500 lbs 2.5 t

4 - Part Line	Line Speed	Capacity
Gear 1	55 ft/min 17 m/min	44,000 lbs 20 t
Gear 2	89 ft/min 27 m/min	29,440 lbs 14.2 t
Gear 3	138 ft/min 42 m/min	18,600 lbs 8.4 t
Gear 4	220 ft/min 67 m/min	11,000 lbs 5.0 t

Unit	Horsepower	Kilowatts	Speed
Trolley	14.2	10.9	0 - 312 ft/min 0 - 95 m/min
Swing	2 x 11 3 x 11	2 x 8.2 3x8.2	1.0 rpm
Traveling	4 x 11.9	4 x 88	0 - 100 ft/min 0 - 30 m/min

**Power Requirements**  
480 volts, 3 phase, 60 Hz, 300 amp service

Additional Equipment and Services Available

- Moritsch Tower Cranes
- Comedil Tower Cranes
- Peiner Tower Cranes
- Sun Tower Cranes
- Comansa Tower Cranes
- Timberland Derricks
- Hardrock Elevators
- Hercules Elevators
- Specialized Rigging
- Technical Services
- Third Party Inspections
- Parts and Repair Services
- Erection and Dismantlement Services

\*Due to product improvement specifications are subject to change without notice.

EQUIPMENT RENTALS - SALES- 24 HOUR SERVICE - YARD STORAGE & TRANSFERS - REGIONAL SERVICE

2214 FM 1187, SUITE 1  
 MANSFIELD, TX 76063  
 OFFICE: 817-225-1090 FAX: 817-225-1095

WWW.LEWISCRANEANDHOIST.COM

# Crane Component List

# PEINER SK-415

# Radius and Capacities

# PEINER SK-415

DESCRIPTION	DEMENSION L x W x H	WEIGHT
Tower Top	29'-4" x 7'-1" x 8'-11" 8.95m x 2.15m x 2.73m	8,600 lbs 3,900 kg
Turntable (Complete) <sup>1</sup> Upper & Lower Part	9'-8" x 7'-9" x 7'-7" 2.95m x 2.35m x 2.3m	21,715 lbs 9,850 kg
Operator's Cab with Platform & Panel	8'-6" x 6'-7" x 7'-2" 2.58m x 2.0m x 2.4m	3,085 lbs 1400 kg
TSK	6'-8" x 7'-10" x 9'-10" 2.02m x 2.4m x 3.0m	6,175 lbs 3,900 kg
Tower Section (TS212)	19'-5" x 7'-10" x 8'-0" 5.92m x 2.4m x 2.44m	9,125 lbs 4,140 kg
Tower Section (TS213 / 212)	19'-5" x 7'-11" x 7'-11" 5.92m x 2.41m x 2.41m	9,930 lbs 4500 kg
Tower Section (TS213)	19'-5" x 7'-11" x 7'-11" 5.92m x 2.41m x 2.41m	9,930 lbs 4500 kg
Counterjib <sup>2</sup> (Complete)	69'-7" x 9'-0" x 5'-7" 21.2m x 2.75m x 1.7m	20,545 lbs 93200 kg
Counterjib Section #1 (Inner) <sup>2</sup>	31'-10" x 6'-6" x 5'-6" 9.71m x 1.98m x 1.67m	4,740 lbs 2500 kg
Counterjib Section #2 (Outer) <sup>3</sup>	38'-1" x 9'-0" x 5'-7" 11.6m x 2.75m x 1.7m	15,805 lbs 7170 kg
Hoist Unit <sup>4</sup> (108 hp/79 kW)	7'-6" x 5'-5" x 3'-3" 2.29m x 1.66m x 1.0m	5,400 lbs 2450 kg
Counterweight Block A	14'-9" x 7'-5" x 5'-1" 4.5m x 0.19m x 1.55m	6,835 lbs 3100 kg
Trolley (outer) <sup>5</sup> (2-part operation)	5'-7" x 6'-11" x 4'-3" 1.7m x 2.11m x 1.28m	950 lbs 430 kg
Hook Block	2'-5" x 1'-1" x 5'-10" 0.74m x 0.33m x 1.79m	1,100 lbs 500 kg
Top Climbing Unit with Hydraulics (TS212)	29'-3" x 11'-6" x 11'-6" 8.9m x 3.5m x 3.5m	24,750 lbs 11230 kg
TS212 Anchor Stools	3'-2" x 2'-0" x 2'-0" 1.20m x 0.6m x .838m	850 lbs 385 kg
TS213 Anchor Stools	5'-5" x 2'-0" x 2'-2" .96m x 0.6m x .809m	1,100 lbs 499 kg
TSK 212 Tie-in Collar	12'-2" x 10'-2" x 1'-7" 3.70m x 3.10m x 0.48m	3,200 lbs 1451 kg

DESCRIPTION	DEMENSION L x W x H	WEIGHT
Jib Section ①	38'-11" x 6'-6" x 7'-3" 11.86m x 2.0m x 2.20m	6,650 lbs 3,016 kg
Jib Section ②	40'-6" x 6'-6" x 7'-3" 12.34m x 2.00m x 2.20m	5,175 lbs 2347 kg
Jib Section ③	38'-10" x 6'-6" x 7'-7" 11.84m x 2.00m x 2.31m	4,750 lbs 2154 kg
Jib Section ④	18'-8" x 6'-6" x 6'-3" 5.69m x 2.00m x 1.91m	2,000 lbs 907 kg
Jib Section ⑤	35'-0" x 6'-6" x 6'-11" 10.67m x 2.00m x 2.10m	4,000 lbs 1814 kg
Jib Section ⑥	35'-5" x 6'-6" x 6'-4" 10.00m x 2.00m x 1.93m	3,000 lbs 1360 kg
Jib Section ⑦	33'-6" x 6'-6" x 6'-3" 10.21m x 2.00m x 1.91m	2,150 lbs 975 kg
Jib Section ⑧	17'-1" x 6'-6" x 6'-3" 5.69m x 2.00m x 1.91m	1,750 lbs 794 kg
Jib Section ⑨ 9 = TIP	4'-6" x 6'-6" x 4'-6" 1.37m x 1.87m x 1.37m	850 lbs 385 kg
Jib Assembly Part 1 <sup>6</sup> For all Jib Assemblies ①②	76'-2" x 6'-2" x 7'-1" 23.2m x 1.87m x 2.17m	18,050 lbs 8187 kg
Jib Assembly Part 2 <sup>7</sup> 246-ft. (74.9m) = L9 ③④⑤⑥⑦⑧⑨	180'-0" x 6'-1" x 6'-5" 54.86m x 1.84m x 1.95m	21,410 lbs 9711 kg
Jib Assembly Part 2 <sup>7</sup> 230-ft. (70.1m) = L8 ③④⑤⑥⑦⑧⑨	163'-0" x 6'-1" x 6'-5" 46.6m x 1.84m x 1.95m	19,660 lbs 8918 kg
Jib Assembly Part 2 <sup>7</sup> 213-ft. (64.9m) = L7 ③⑤⑥⑦⑧⑨	145'-0" x 6'-1" x 6'-5" 44.19m x 1.84m x 1.95m	17,350 lbs 7871 kg
Jib Assembly Part 2 <sup>7</sup> 197-ft. (60.0m) = L6 ③④⑤⑥⑧⑨	129'-0" x 6'-1" x 6'-5" 39.31m x 1.84m x 1.95m	17,510 lbs 7942 kg
Jib Assembly Part 2 <sup>7</sup> 180-ft. (54.8m) = L5 ③⑤⑥⑧⑨	111'-0" x 6'-1" x 6'-5" 33.8m x 1.84m x 1.95m	15,200 lbs 6895 kg
Jib Assembly Part 2 <sup>7</sup> 164-ft. (49.9m) = L4 ③④⑤⑧⑨	95'-0" x 6'-1" x 6'-5" 37.82m x 1.84m x 1.95m	14,510 lbs 6582 kg
Jib Assembly Part 2 <sup>7</sup> 148-ft. (45.1m) = L3 ③⑤⑧⑨	76'-6" x 6'-1" x 6'-5" 32.03m x 1.84m x 1.95m	12,200 lbs 5534 kg
Jib Assembly Part 2 <sup>7</sup> 131-ft. (39.9m) = L2 ③④⑧⑨	60'-0" x 6'-1" x 6'-5" 26.1m x 1.84m x 1.95m	9,960 lbs 4512 kg
Jib Assembly Part 2 <sup>7</sup> 115-ft. (35.0m) = L1 ③⑧⑨	42'-0" x 6'-1" x 6'-5" 12.03m x 1.84m x 1.95m	7,980 lbs 3610 kg

NOTE: Weights and dimensions are approximate, Please weigh components before lifting.

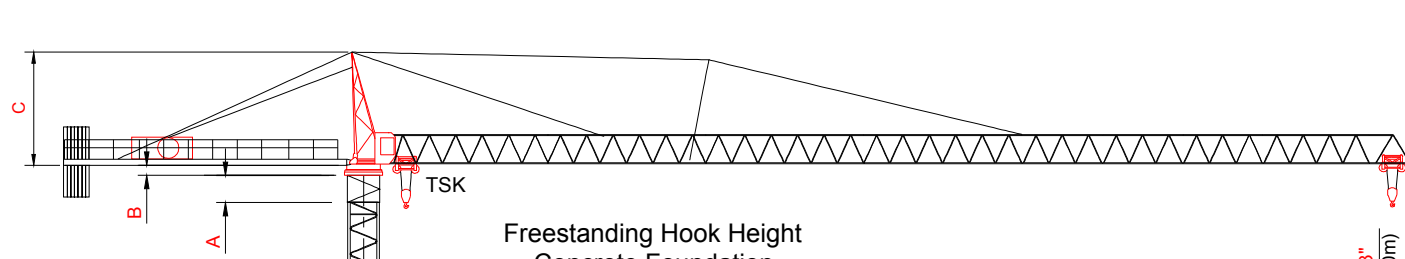
- Turntable (Complete) includes swing motors, Slewing ring, and slewing ring support.
- Crane includes Counterjib Sections #1 & #2 108 hp (79kW) hoist unit w/frame, electrical panel and handrails, Doesn't include wire rope.
- Counterjib Section #2 includes 108 hp (79 kW) hoist unit w/frame, Doesn't include wire rope.
- Does not include wire rope. 22mm rope weighs 2lbs/ft (2.7 kg/m).
- Two-part operation requires a single (outer) trolley. Four-part operation requires two (inner and outer) trolleys, Inner and outer trolley dimensions and weights are the same.
- Jib Assembly Part 1 includes jib sections, pendant cables, jib A-frame, trolley drive unit, trolley wire rope, 2-part trolley (outer) and hook back. If 4-part application is used, weight increases by 2,050 lbs (930 kg) for additional trolley (inner) and hook block.
- Jib assembly Part 2 includes jib sections and pendant cables.

Radius and capacity (feet and pounds) 2-Part-Line	ft.									
Hook Radius	102'	115'	131'	148'	164'	180'	197'	213'	230'	246'
246ft	22,025 lbs - 102'-0"									
230ft	22,025	19,635	16,660	14,355	12,520	11,020	9,775	8,725	7,825	7,045
213ft	22,025	22,025	21,482	18,638	16,365	14,510	12,970	11,670		
197ft	22,025	22,025	22,025	20,430	17,980	15,980	14,315			
180ft	22,025	22,025	22,025	21,950	19,300	17,180				
164ft	22,025	22,025	22,025	22,025	22,025					
148ft	22,025	22,025	22,025	22,025						
131ft	22,025	22,025	22,025							
115ft	22,025	22,025								

Radius and capacity (feet and pounds) 4-Part-Line	ft.									
Hook Radius	92'	111'	128'	144'	161'	177'	193'	210'	226'	243'
243ft	44,050 lbs - 56'-0"									
226ft	24,590	21,925	18,300	15,510	13,305	11,510	10,025	8,775	7,705	5,505
210ft	31,195	24,510	20,545	17,495	25,085	13,120	11,495	10,130		
193ft	33,925	26,745	22,490	19,215	16,620	14,515	12,775			
177ft	36,115	28,545	24,050	20,595	17,860	15,635				
161ft	38,035	30,115	25,415	21,800	18,940					
144ft	39,085	30,975	26,160	22,465						
128ft	39,770	31,535	26,650							
111ft	39,990	31,715								

Radius and capacity (meter and tons) 2-Part-Line	m									
Hook Radius	31	35	40	45	50	55	60	65	70	75
75m	10t - 31m									
70m	10.0	8.92	7.56	6.52	5.69	5.01	4.44	3.96	3.55	3.20
65m	10.0	10.0	8.70	7.53	6.59	5.83	5.20	4.66	4.20	
60m	10.0	10.0	9.75	8.46	7.43	6.59	5.89	5.30		
55m	10.0	10.0	10.0	9.28	8.19	7.26	6.50			
50m	10.0	10.0	10.0	10.0	9.30					
45m	10.0	10.0	10.0	10.0						
40m	10.0	10.0	10.0							
35m	10.0	10.0								

Radius and capacity (meters and tons) 4-Part-Line	m									
Hook Radius	28	33	39	43	49	53	58	64	68	74
74m	20t - 17m									
69m	11.17	8.67	7.19	6.06	5.16	4.43	3.82	3.31	2.88	2.50
64m	12.73	9.96	8.31	7.04	6.04	5.23	4.55	3.98	3.50	
59m	14.16	11.13	9.33	7.94	6.85	5.96	5.22	4.60		
54m	15.40	12.14	10.21	8.72	7.55	6.59	5.80			
49m	16.40	12.96	10.92	9.35	8.11	7.10				
44m	17.27	13.67	11.54	9.90	8.60					
39m	17.75	14.06	11.88	10.20						
34m	18.06	14.32	12.10							
	18.16	14.40								



Freestanding Hook Height  
Concrete Foundation

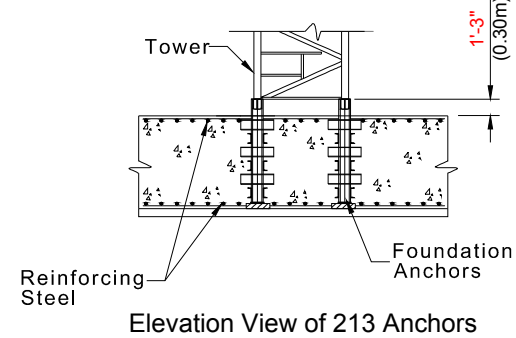
Towers	Feet	Meters
1	21	7.4
2	41	13.3
3	60	19.2
4	79	25.1
5	99	31.0
6	118	36.9
7	138	42.8
8	157	48.7
9	176	54.6
10	195	60.5
11	215	66.4
* 12	237	72.3
* 13	256	78.2
* 14	273	83.2

For greater freestanding heights or hook heights for static or traveling undercarriage contact Lewis Crane and Hoist.

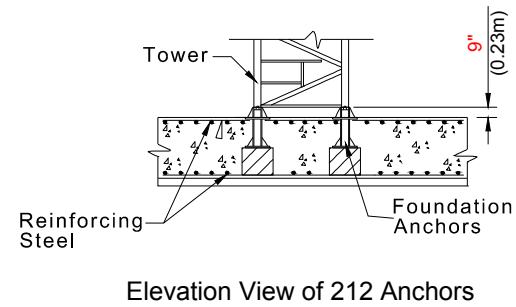
\* Big Tower used to accomplish these heights

**NOTE:**  
Hook heights may be limited by geographic location

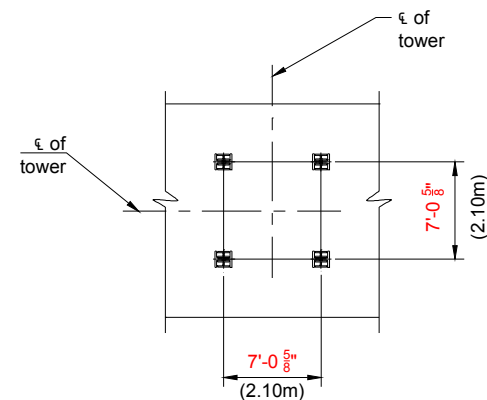
A = Height of TSK tower section 6'-8" (2.02m)  
B = Height of complete slewing unit 9'-5" (2.95m)  
C = Height of tower top 29'-4" (8.95m)



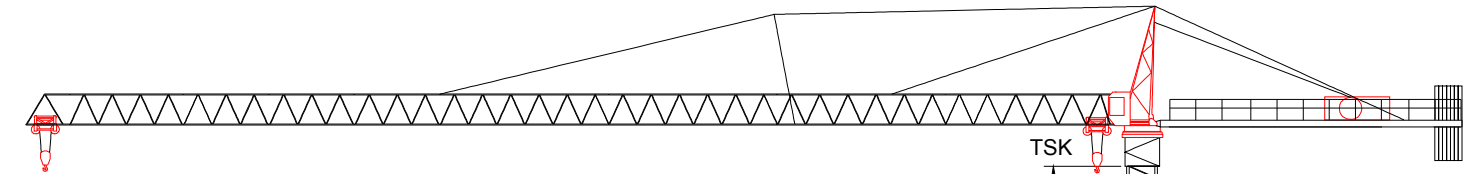
Elevation View of 213 Anchors



Elevation View of 212 Anchors



Plan View of Anchors



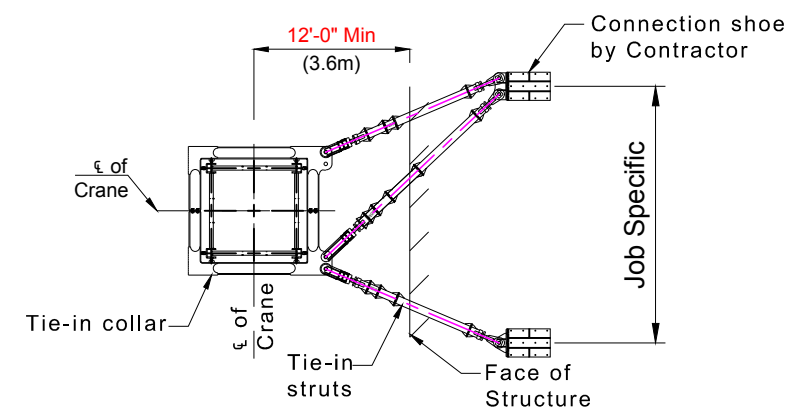
NOTE:

1. Climbing lugs must be oriented to ensure cab is positioned away from building.
2. Lower or remove top climbing unit prior to operating the crane.
3. If hook height exceeds 330 ft (100m) the number of tower sections above the upper most tie-in location must be reduced by one section.

NOTE:

Tie-in installations may vary due to job site conditions. Contact Lewis Crane and Hoist for more information regarding dimensions and reactions forces.

1. Tie-in installations may vary due to job site stipulations/conditions
2. Climbing lugs must be oriented to ensure cab is away from the building
3. The jib must be parallel to the face of the building when climbing.



Tie-in Detail  
Plan View

