



• Tower Crane • Hoist • Mobile •
Rentals and Sales

Sun STT-140

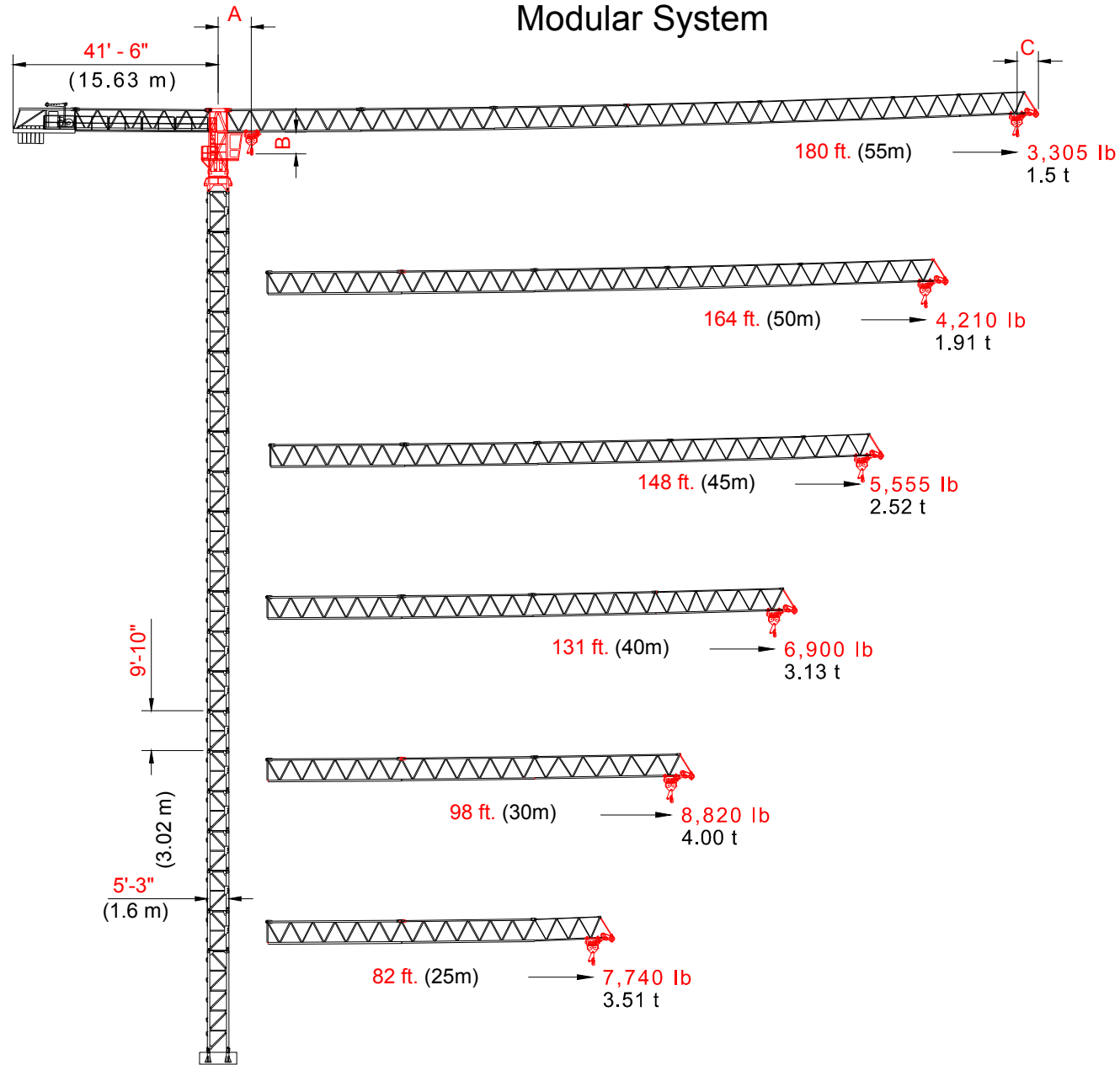


"Your Turnkey Crane and Hoist Provider"



Topless Tower Crane

Topless Tower Crane
Modular System



A = Centerline crane to minimum 2 part hook radius 8'-2" (2.5m)
 B = Bottom of jib to hook block 5'-3" (1.6m)
 C = Add for jib tip radius 4'-1" (1.25m)

Line Speeds and Power Requirements

Hoist Unit
40 hp 30 kW

2 - Part Line	Line Speed	Capacity
8,820 lbs 4 t	0 - 21 ft/min 0 - 6.5 m/min	8,820 lbs 4.0 t
	0 - 131 ft/min 0 - 40 m/min	8,820 lbs 4.0 t
	0 - 262.5 ft/min 0 - 80 m/min	4,410 lbs 2.0 t

4 - Part Line	Line Speed	Capacity
17,640 lbs 8 t	0 - 10.5 ft/min 0 - 3.2 m/min	17,640 lbs 8.0 t
	0 - 67 ft/min 0 - 20 m/min	17,640 lbs 8.0 t
	0 - 131 ft/min 0 - 40 m/min	8,820 lbs 4.0 t

Unit	Horsepower	Kilowatts	Speed
Trolley	5 HP	3.7 Kw	0 - 187 ft/min 0 - 57 m/min
Swing	2 x 5 Hp	2 x 3.7 Kw	0 - 0.7 rpm
Travelling	2 x 3.5/7.0	2 x 2.6/5.2	41 - 82 ft/min 12.5 - 25 m/min

Power Requirements
480 volts, 60 cycle, 3 phase: 150 amp service

Additional Equipment and Services Available

- Moritsch Tower Cranes
- Comedil Tower Cranes
- Peiner Tower Cranes
- Sun Tower Cranes
- Comansa Tower Cranes
- Timberland Derricks
- Hardrock Elevators
- Hercules Elevators
- Specialized Rigging
- Technical Services
- Third Party Inspections
- Parts and Repair Services
- Erection and Dismantlement Services

*Due to product improvement specifications are subject to change without notice.

EQUIPMENT RENTALS - SALES- 24 HOUR SERVICE - YARD STORAGE & TRANSFERS - REGIONAL SERVICE

2214 FM 1187, SUITE 1
 MANSFIELD, TX 76063
 OFFICE: 817-225-1090 FAX: 817-225-1095

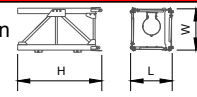
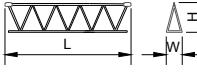
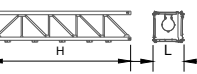
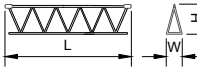
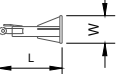
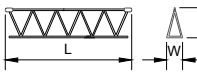
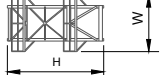
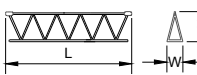
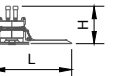
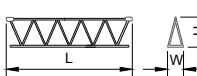
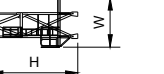
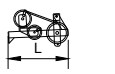


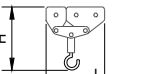
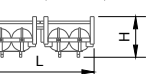
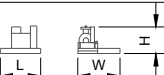
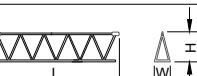
WWW.LEWISCRANEANDHOIST.COM

Crane Component List

Sun STT-140

Radius and Capacities

Sun STT-140

DESCRIPTION	DIMENSION L x W x H	WEIGHT	DESCRIPTION	DIMENSION L x W x H	WEIGHT
Mast Section 	5'3" x 5'3" x 9'10" 1.6m x 1.67m x 3.02m	2,712 lbs 1230 kg	Jib Section ② 	33'8" x 3'11" x 5'9" 10.2m x 1.2m x 1.8m	3,640 lbs 1,651 kg
Base Mast L46G20 	5'7" x 5'7" x 25'3" 1.7m x 1.7 x 7.7m	6,185 lbs 2805 kg	Jib Section ③ 	33'6" x 3'11" x 5'8" 10.2m x 1.2m x 1.7m	2,977 lbs 1,350 kg
Anchor Stool D46 	3'11" x 1'7" x 1'7" 1.2m x 0.5m x 0.5m	373 lbs 169 kg	Jib Section ④ 	33'4" x 3'11" x 5'7" 10.2m x 1.2m x 1.7m	2,425 lbs 1,100 kg
Climbing Cage 	11'9" x 11'9" x 22'3" 3.6m x 3.6m x 6.8m	6,174 lbs 2,800 kg	Jib Section ⑤ 	33'3" x 3'11" x 5'6" 10.1m x 1.2m x 1.7m	1,720 lbs 780 kg
Complete Slewing Unit 	13'10" x 6'11" x 8'1" 4.2m x 2.1m x 2.5m	9,702 lbs 4,400 kg	Jib Section ⑥ 	16'9" x 3'11" x 5'6" 5.1m x 1.2m x 1.7m	706 lbs 320 kg
Cathead 	8'3" x 10'2" x 17'5" 2.5m x 3.1m x 5.3m	5,930 lbs 2,690 kg	Jib Section Nose ⑦ 	3'10" x 3'11" x 2'1" 1.2m x 1.2m x 0.6m	148 lbs 67 kg
Counter-jib 	48'10" x 9'7" x 6'4" 14.9m x 2.9m x 1.9m	11,464 lbs 5,200 kg	Jib Assembly for 180 ft (55 m) jib ①②③④⑤⑥⑦⑧	184'1" x 5'11" x 6'11" 56.1m x 1.8m x 2.1m	17,640 lbs 8,001 kg
Operator's Cabin 	6'3" x 3'7" x 6'11" 1.9m x 1.1m x 2.1m	331 lbs 150 kg	Jib Assembly for 164 ft (50 m) jib ①②③④⑤⑦⑧	165'8" x 5'11" x 6'11" 50.5m x 1.8m x 2.1m	16,900 lbs 7,666 kg
Hook Block 	4'5" x 0'9" x 4'3" 1.3m x 0.2m x 1.3m	560 lbs 254 kg	Jib Assembly for 148 ft (45 m) jib ①②③④⑥⑦⑧	149'3" x 5'11" x 6'11" 45.5m x 1.8m x 2.1m	15,900 lbs 7,212 kg
Jib Trolley 	8'4" x 6'3" x 3'0" 2.5m x 1.9m x 0.9m	1,208 lbs 548 kg	Jib Assembly for 131 ft (40 m) jib ①②③④⑦⑧	132'10" x 5'11" x 6'11" 40.5m x 1.8m x 2.1m	15,200 lbs 6,895 kg
Hoisting Winch 	4'11" x 3'7" x 2'11" 1.5m x 1.1m x 0.9m	4,600 lbs 2,086 kg	Jib Assembly for 98 ft (30 m) jib ①②③⑦⑧	99'8" x 5'11" x 6'11" 30.4m x 1.8m x 2.1m	12,800 lbs 5,806 kg
Jib Section ① 	33'9" x 3'11" x 8'3" 10.3m x 1.2m x 2.5m	5,512 lbs 2,500 kg	Jib Assembly for 82 ft (25 m) jib ①②⑦⑧	83'8" x 5'11" x 6'11" 25.5m x 1.8m x 2.1m	9,800 lbs 4,445 kg

NOTE: Weights and dimensions are approximate. Weigh components before lifting.

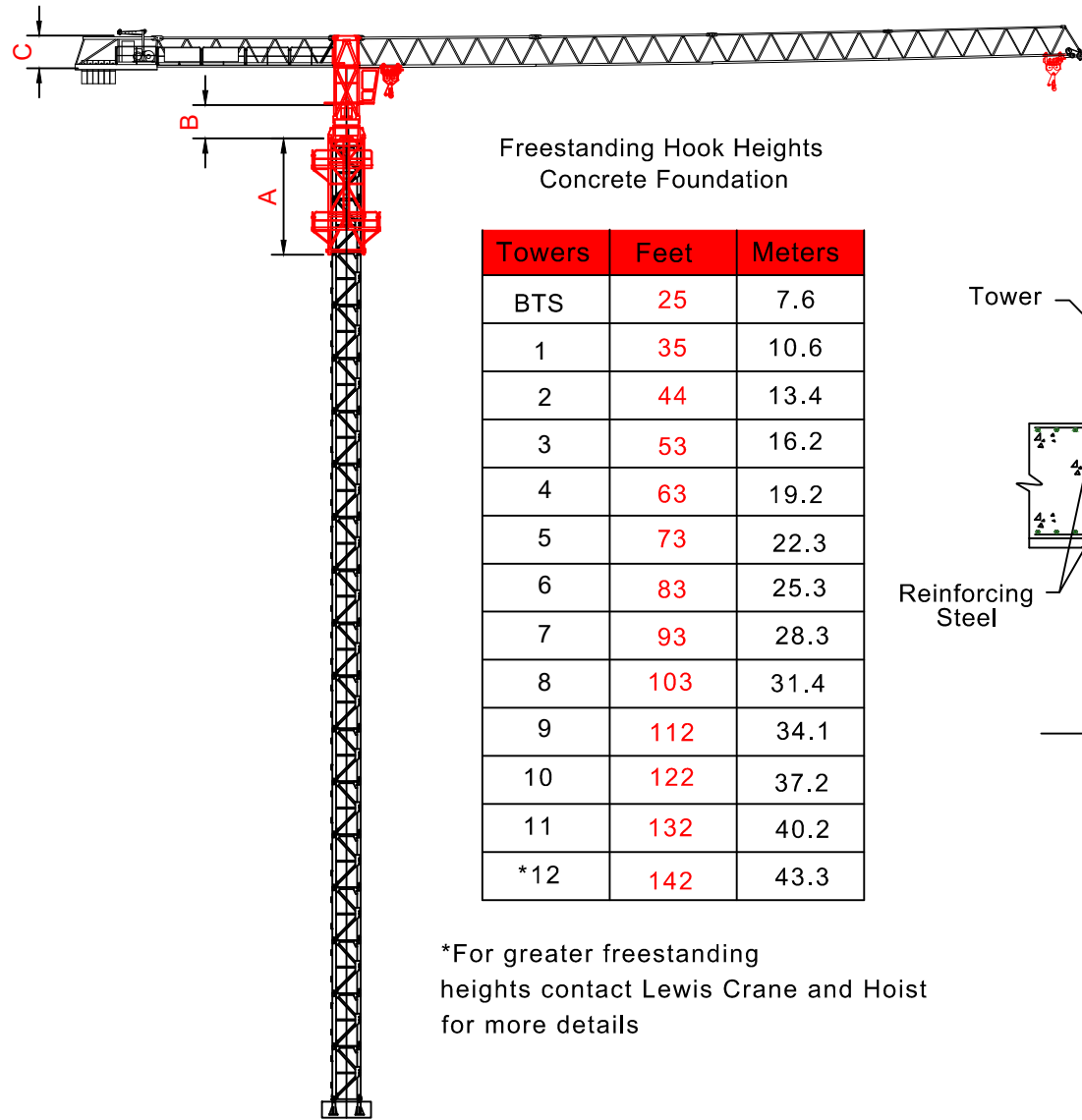
Turntable upper weight (slewing motors incl.)	2884 kg/6359 lbs	1 jib assembly doesn't include trolley, pulley support and load block
Turntable lower weight (slewing ring incl.)	2454 kg/5411 lbs	2 Hoist unit doesn't include wire rope, counterjib frame, platforms
Top climbing unit total weight (all included)	5171 kg/11,400 lbs	3 Counterweight-jib doesn't include hoist winch frame and tie bars
Counter-jib Ballast Block A	1970 kg/4,344 lbs	4 Operator's cabin doesn't include platform
Counter-jib Ballast Block B	1700 kg/3,748 lbs	5 Turntable complete doesn't include platform and operator cabin
Base Ballast C	2800 kg/6,174 lbs	6 Counterweight-jib doesn't include handrails and platforms
Base Ballast D	2500 kg/5,512 lbs	7 Cathead includes cabin, rails, platform and ladder

Radius and capacity (feet and pounds)	2-Part-Line									ft
Hook Radius	50	66	82	98	115	131	148	164	180	
180 ft	8,820 lbs - 79ft	8,820	8,820	8,444	6,812	5,512	4,674	4,057	3,616	3,305
164 ft	8,820 lbs - 86ft	8,820	8,820	8,820	7,540	6,614	5,644	4,762	4,210	
148 ft	8,820 lbs - 97ft	8,820	8,820	8,820	8,730	7,341	6,305	5,555		
131 ft	8,820 lbs - 103ft	8,820	8,820	8,820	8,820	7,893	6,900			
98 ft	8,820 lbs - 98ft	8,820	8,820	8,820	8,820					
82 ft	8,820 lbs - 73ft	8,820	8,820	7,740						

Radius and capacity (feet and pounds)	4-Part-Line									ft
Hook Radius	50	66	82	98	115	131	148	164	180	
180 ft	17,640 lbs - 41ft	14,330	10,229	7,562	5,997	4,784	3,836	3,175	2,690	2,380
164 ft	17,640 lbs - 43ft	15,102	11,045	8,708	6,658	5,313	4,343	3,704	3,285	
148 ft	17,640 lbs - 45ft	16,072	12,258	9,700	7,848	6,460	5,423	4,630		
131 ft	17,640 lbs - 47ft	16,843	12,699	9,965	8,333	7,011	5,975			
98 ft	17,640 lbs - 47ft	16,843	12,699	9,965	8,333					
82 ft	17,640 lbs - 38ft	12,941	9,083	6,812						

Radius and capacity (meters and tons)	2-Part-Line									m
Hook Radius	15	20	25	30	35	40	45	50	55	
55 m	4 t - 24 m	4.00	4.00	3.83	3.09	2.50	2.12	1.84	1.64	1.50
50 m	4 t - 26.3 m	4.00	4.00	4.00	3.42	3.00	2.56	2.16	1.91	
45 m	4 t - 29.7m	4.00	4.00	4.00	3.96	3.33	2.86	2.52		
40 m	4 t - 31.3 m	4.00	4.00	4.00	4.00	3.58	3.13			
30 m	4 t - 30 m	4.00	4.00	4.00	4.00					
25 m	4 t - 22.28 m	4.00	4.00	3.54						

Radius and capacity (meters and tons)	4-Part-Line									m
Hook Radius	15	20	25	30	35	40	45	50	55	
55 m	8 t - 12.50 m	6.50	4.64	3.43	2.72	2.17	1.74	1.44	1.22	1.08
50 m	8 t - 13.2 m	6.85	5.01	3.95	3.02	2.41	1.97	1.68	1.49	
45 m	8 t - 13.6 m	7.29	5.56	4.40	3.56	2.93	2.46	2.10		
40 m	8 t - 14.2 m	7.64	5.76	4.52	3.78	3.18	2.71			
30 m	8 t - 14.2 m	7.64	5.76	4.52	3.78					
25 m	8 t - 11.56 m	5.87	4.12	3.09						

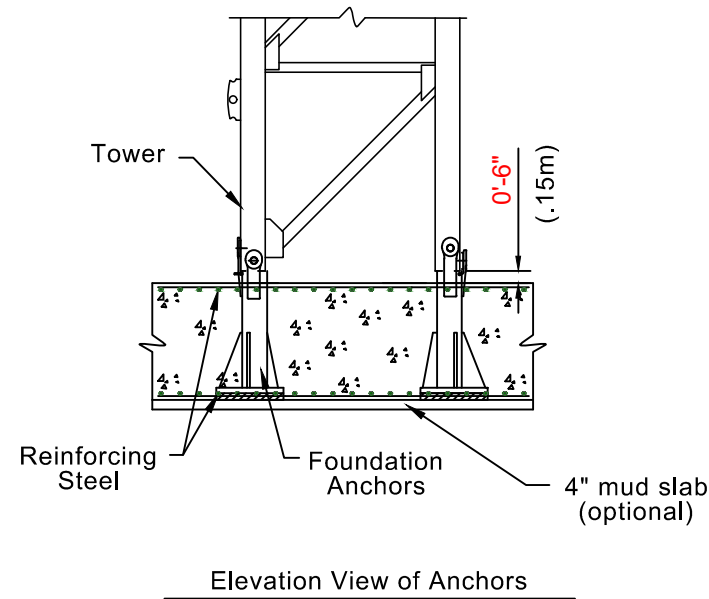


Freestanding Hook Heights
Concrete Foundation

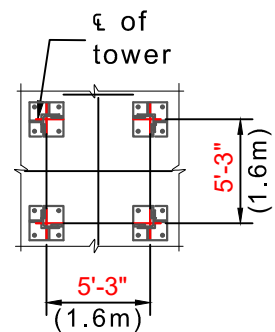
Towers	Feet	Meters
BTS	25	7.6
1	35	10.6
2	44	13.4
3	53	16.2
4	63	19.2
5	73	22.3
6	83	25.3
7	93	28.3
8	103	31.4
9	112	34.1
10	122	37.2
11	132	40.2
*12	142	43.3

*For greater freestanding heights contact Lewis Crane and Hoist for more details

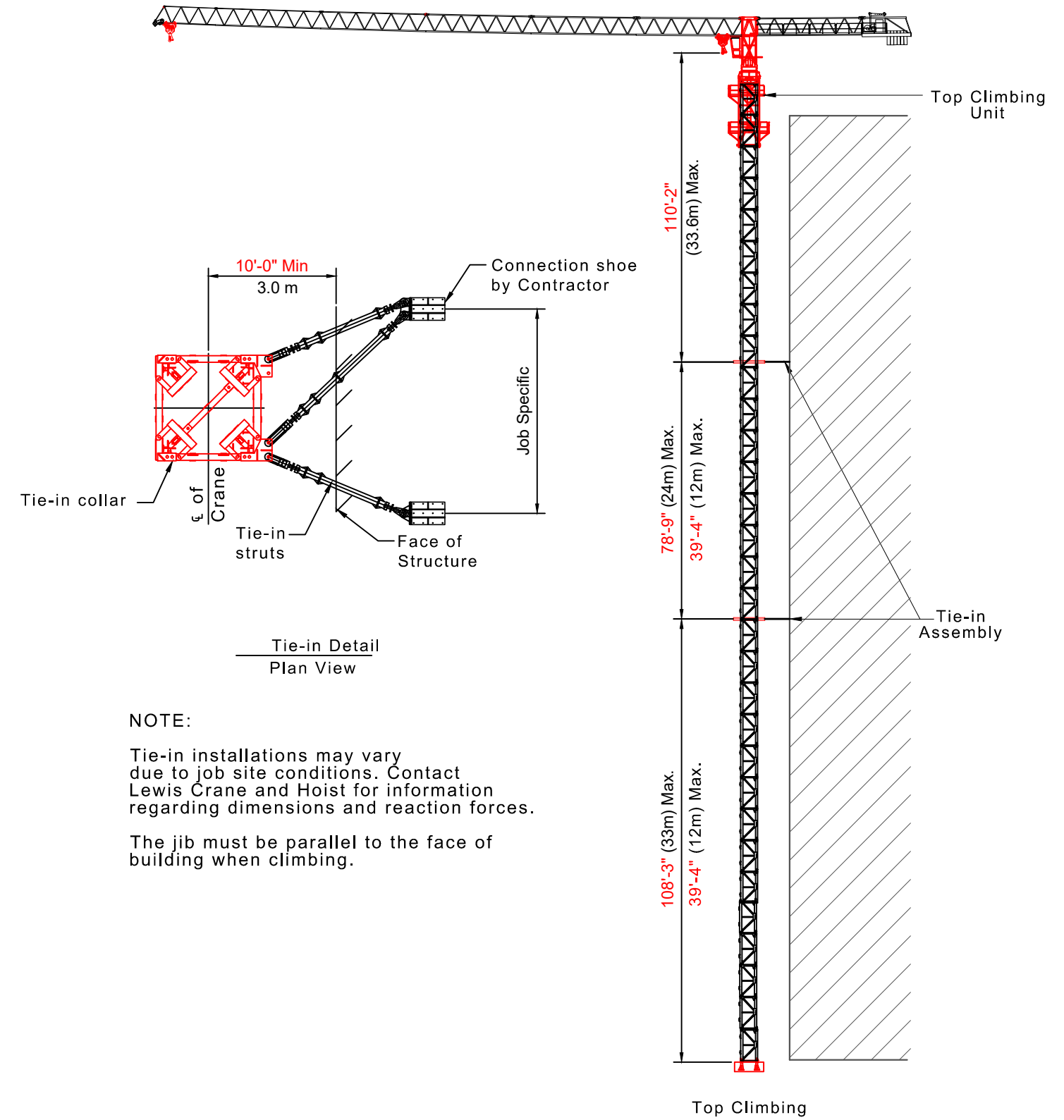
- A = Height of telescoping unit 22' - 3" (6.8 m)
- B = Height of complete slewing unit 8' - 1" (2.5 m)
- C = Height of jib section 8' - 3" (2.5 m)



Elevation View of Anchors



Plan View of Anchors



NOTE:

Tie-in installations may vary due to job site conditions. Contact Lewis Crane and Hoist for information regarding dimensions and reaction forces.

The jib must be parallel to the face of building when climbing.