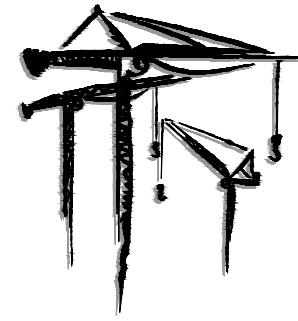


FEATURES

F7000W DHS

**F7000W DHS
WIDE TOWER**



**LEWIS
CRANE & HOIST**

**HERCULES
ELEVATORS**

SAFETY FEATURES

- Electronic and mechanical door interlocks on elevator cars and ground enclosure unit
- Overload device to prevent elevator operation when rated payload has been exceeded
- Spring buffer assembly
- Low and medium speed elevators do not require counterweights
- Galvanized tower sections and tie-ins

DESIGN FEATURES

- Smooth starting and stopping without surging or jarring the elevator car
- The lifting speed can be easily controlled and is infinitely variable
- The elevator starting current is lower than the rated current
- Using the frequency conversion drive greatly reduces mechanical wear and tear on the elevator and its components
- The frequency conversion drive is more efficient and uses less power.

INSTALLATION

- For instructions regarding the erection, climbing, dismantling, operation and maintenance of the elevator car refer to the operations manual.
- This product must be operated by competent, orientated personnel and used in a safe manner to conform with the manufacturers specifications and in compliance with all federal, state standards and regulations.
- Drawings are for illustrative purposes only and do not necessarily show the exact configurations of products offered on the market at a particular time.

Lewis Crane and Hoist LLC. not only owns and maintains one of the largest elevator fleets in the United States, but also exclusively offers the Hercules elevators. Hercules elevators are the newest, fastest, highest capacity of counterweightless elevators available in America.

At Lewis Crane and Hoist LLC., we believe that our business is not only equipment but also service. Because of this belief, Lewis Crane and Hoist LLC. offers services for all rigging, mechanical, electrical and engineering needs. We make it our business to ensure that the services we offer are far superior to any of our competitors because we understand that your project is only as good as the equipment used to build it.

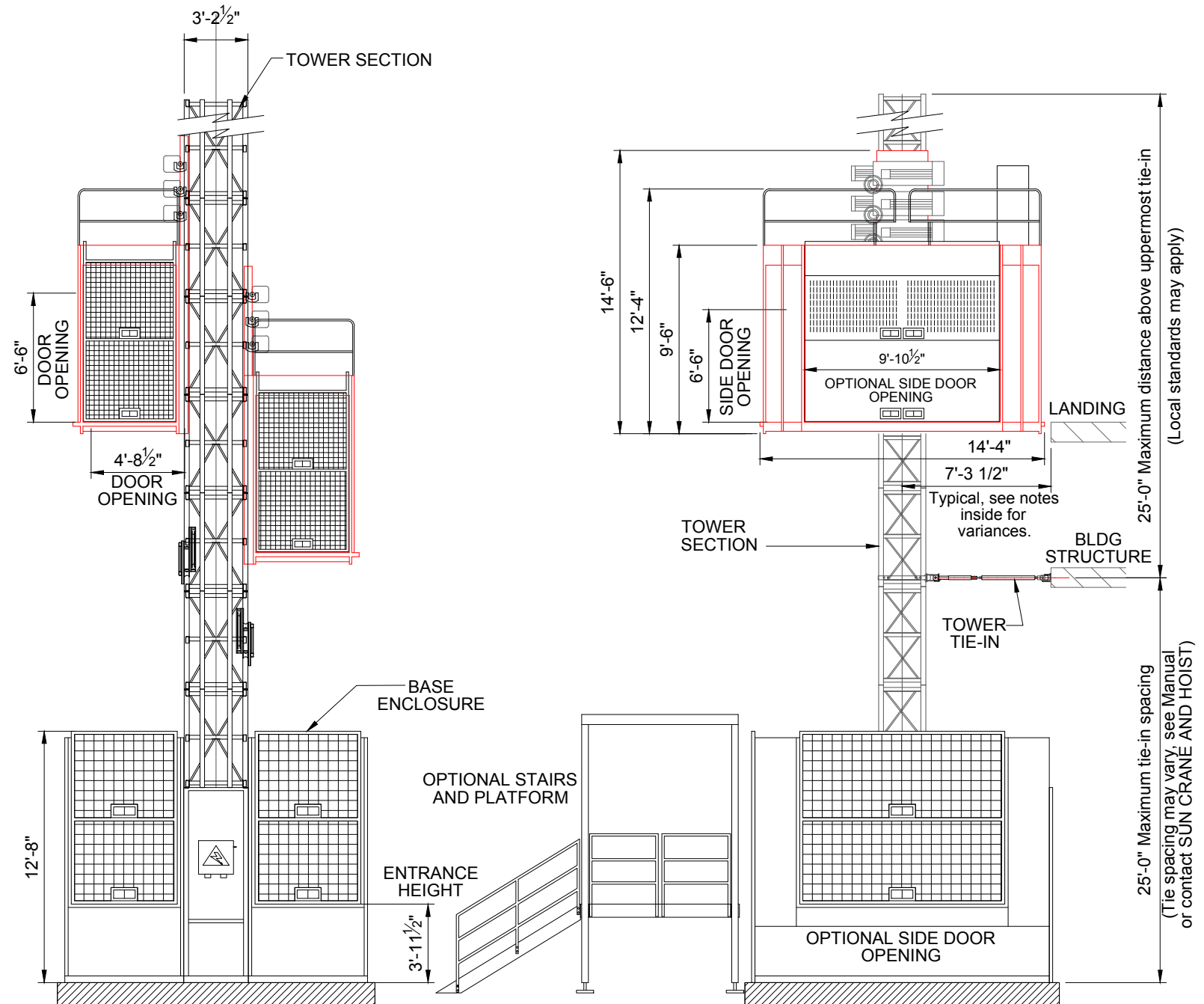
Additional Equipment and Services Available

Moritsch Tower Cranes
Comedil Tower Cranes
Peiner Tower Cranes
Sun Tower Cranes
Comansa Tower Cranes
Timberland Derricks
Hardrock Elevators
Hercules Elevators
Specialized Rigging
Technical Services
Third Party Inspections
Parts and Repair Services
Erection and Dismantlement Services

*Due to product improvement specifications are subject to change without notice.

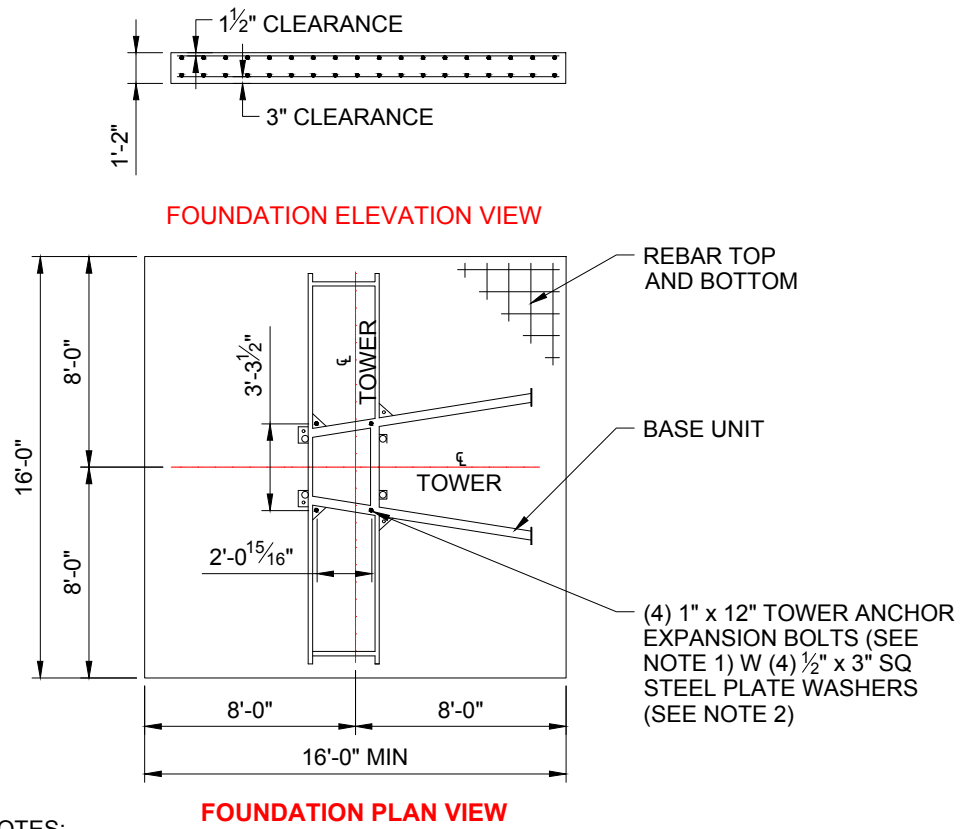
EQUIPMENT RENTALS - SALES- 24 HOUR SERVICE - YARD STORAGE & TRANSFERS - REGIONAL SERVICE

2214 FM 1187, SUITE 1
MANSFIELD, TX 76063
OFFICE: 817-225-1090 FAX: 817-225-1095



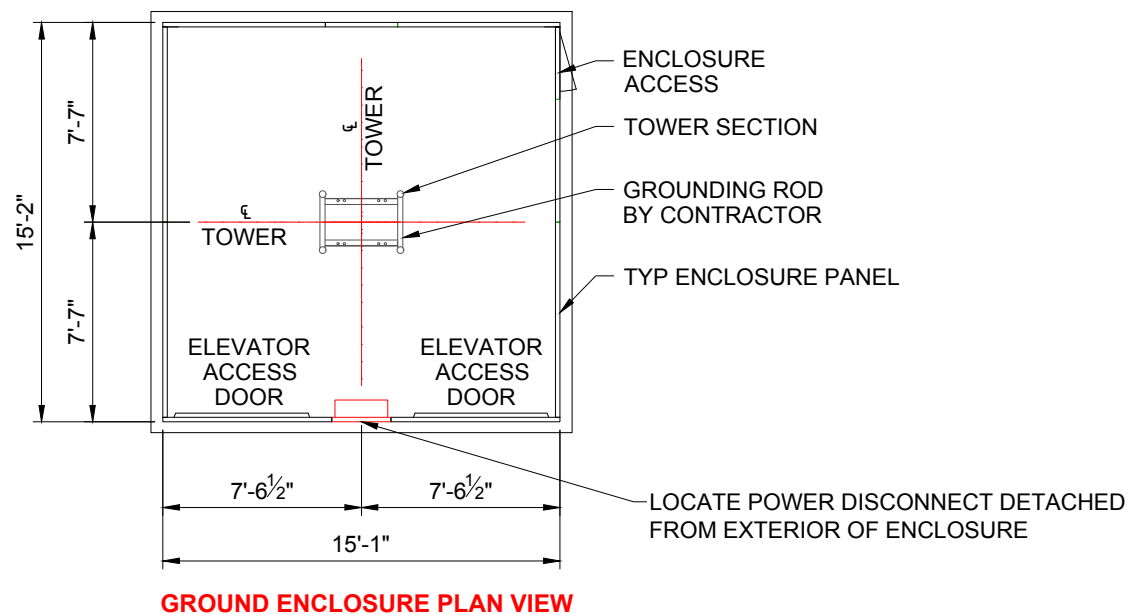
FOUNDATION DETAILS

F7000W DHS



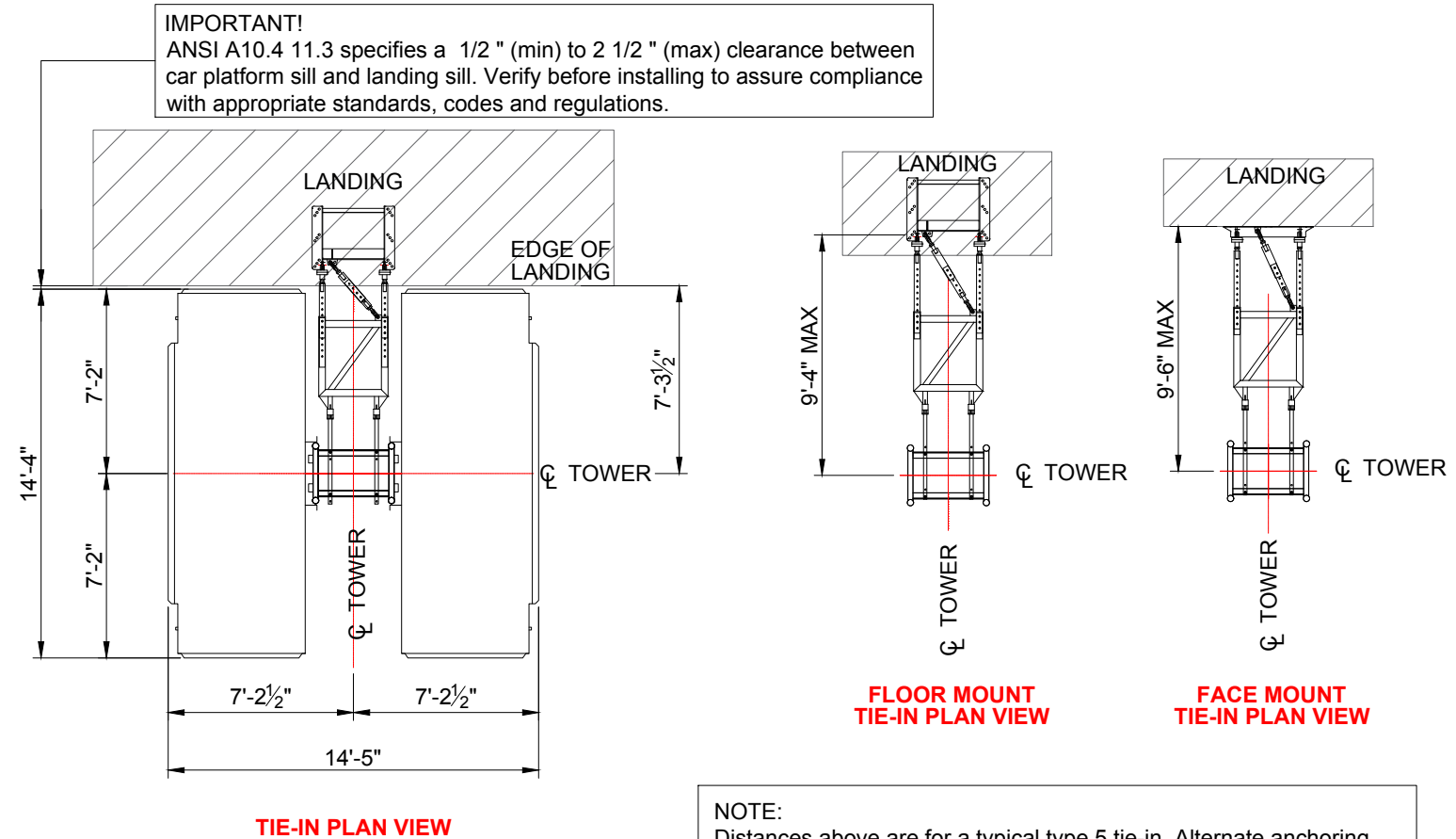
NOTES:

- 1" x 12" HILTI Kwik Bolt II anchor bolt or approved equal. Bolt by contractor. Install according to bolt manufacturer's requirements.
- Foundation slab: 16'-0" x 16'-0" x 1'-2" with 3,500 psi concrete.
- Reinforcing bars are #5 ASTM 615-60 10" o.c. each way.
- Foundation based on 490 foot mast height. For greater heights contact Lewis Crane and Hoist for design.
- Foundation pad designed for a minimum soil bearing of 1,000 psf.
- Refer to manufacturer's manual before installing, operating, servicing, repairing, jumping or dismantling.



TIE-IN DETAILS

F7000W DHS



NOTE:
Distances above are for a typical type 5 tie-in. Alternate anchoring methods are available. Contact Lewis Crane and Hoist for information.

MODEL VARIATIONS

- F 7000 DLS (WITHOUT COUNTERWEIGHT)
- F 7000 DHS (WITH COUNTERWEIGHT)

- 150 FPM (LOW SPEED)
- 315 FPM (HIGH SPEED)

GENERAL

- LOAD CAPACITY
- INSIDE ELEVATOR CAR DIMENSIONS
- DOOR OPENING (END)
- OPTIONAL SIDE DOOR OPENING
- TOWER SECTION LENGTH
- MAXIMUM TOWER HEIGHT
- MAXIMUM TOWER TIE-IN SPACING

- 7,000 lb (PER CAR)
- 4'-10" wide x 7'-9" high x 13'-9" long
- 4'-8 1/2" x 6'-6"
- 9'-10 1/2" x 6'-6"
- 4'-11 1/2"
- 490'-0" (For greater heights consult LEWIS CRANE & HOIST)
- 25'-0"

WEIGHTS

- GROUND ENCLOSURE
- BASE UNIT
- ELEVATOR CAR
- COUNTERWEIGHT (DHS ONLY)
- TOWER SECTION (8 mm)
- CATHEAD (DHS ONLY)
- TIE-IN (TYPE 5)

- 1,980 lb
- 1,200 lb
- 5,290 lb
- 4,850 lb each
- 625 lb
- 820 lb
- 212 lb per set

ELECTRICAL

- POWER REQUIREMENT (PER CAR)
- MOTORS (PER CAR)

- 480 VOLT - 150 AMPS - 3 PHASE - 60 HZ
- 3 x 30 HP EA.