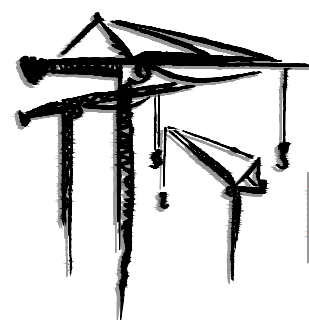


**LEWIS**  
**CRANE & HOIST**

• Tower Crane • Hoist • Mobile •  
Rentals and Sales



**LEWIS**  
**CRANE & HOIST**

2214 HWY. 1187 BLDG. 1  
Mansfield, TX 76063  
817-225-1090

[WWW.LEWISCRANEANDHOIST.COM](http://WWW.LEWISCRANEANDHOIST.COM)

*"Your Turnkey Crane and Hoist Provider"*

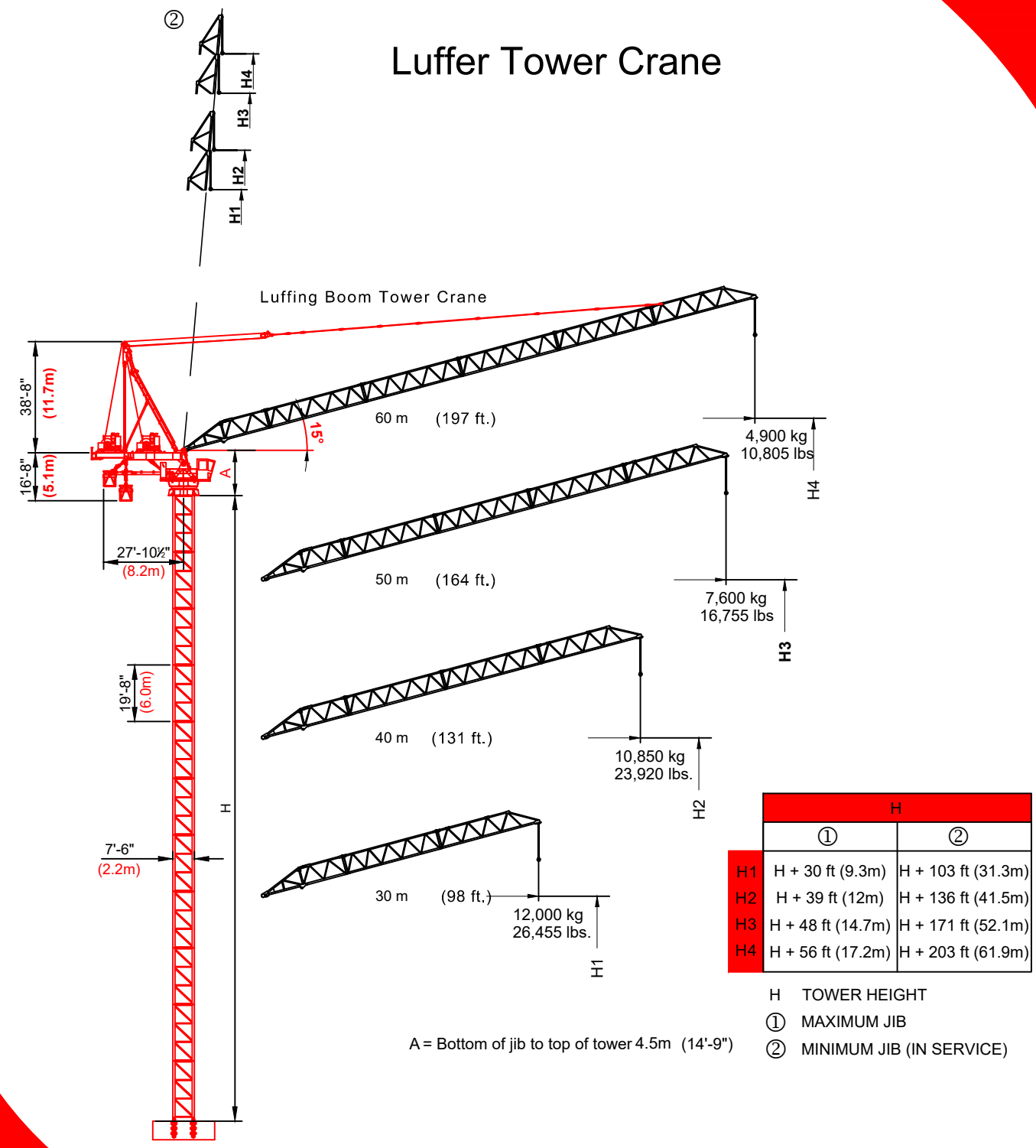
COMEDIL CTL400  
Luffer Tower Crane





**Line Speeds and Power Requirements**

**Luffer Tower Crane**



**Hoist Unit**  
147 hp 110 kW

2 - Part Line	Line Speed	Capacity
Gear 1	131 ft/min 40 m/min	26,455 lbs 12 t
Gear 2	180 ft/min 55 m/min	18,960 lbs 8.6 t
Gear 3	246 ft/min 75 m/min	13,227 lbs 6 t
Gear 4	335 ft/min 102 m/min	9,259 lbs 4.2 t
Gear 5	381 ft/min 116 m/min	1,323 lbs 0.6 t

4 - Part Line	Line Speed	Capacity
Gear 1	89 ft/min 27 m/min	39,683 lbs 18 t
Gear 2	121 ft/min 37 m/min	28,440 lbs 12.9 t
Gear 3	164 ft/min 50 m/min	19,842 lbs 9 t
Gear 4	223 ft/min 68 m/min	13,889 lbs 6.3 t
Gear 5	253 ft/min 77 m/min	1,984 lbs 0.9 t

Unit	Horsepower	Kilowatts	Speed
Luffing	120.7	90 kW	2.1 min
Swing	2 x 18.8	2 x 14 kW	0.65 rpm
Travelling	4 x 59	4 x 80 Nm	39 - 79 ft/min 12 - 24 m/min

**Power Requirements**  
460 volts, 60 cycle, 3 phase: 365 amp service

**Additional Equipment and Services Available**

- Moritsch Tower Cranes
- Comedil Tower Cranes
- Peiner Tower Cranes
- Lewis Tower Cranes
- Comansa Tower Cranes
- Timberland Derricks
- Hardrock Elevators
- Hercules Elevators
- Specialized Rigging
- Technical Services
- Third Party Inspections
- Parts and Repair Services
- Erection and Dismantlement Services

\*Due to product improvement specifications are subject to change without notice.

**EQUIPMENT RENTALS - SALES- 24 HOUR SERVICE - YARD STORAGE & TRANSFERS - REGIONAL SERVICE**

2214 FM 1187, SUITE 1  
 MANSFIELD, TX 76063  
 OFFICE: 817-225-1090 FAX: 817-225-1095

[WWW.LEWISCRANEANDHOIST.COM](http://WWW.LEWISCRANEANDHOIST.COM)

# Crane Component List

## COMEDIL CTL-400

DESCRIPTION	DIMENSION L x W x H	WEIGHT
HD23 26.6 * Tower section	7'8" x 7'7" x 19'8" 2.34m x 2.32m x 6m	14,270 lbs 6,473 kg
HD23 22.6 * Tower section	7'6" x 7'6" x 19'8" 2.28m x 2.29m x 6m	10,630 lbs 4,823 kg
Anchor Stool 26.6	8'4" x 2'7" x 2'7" 2.55m x 0.8m x 0.8m	1,824 lbs 827 kg
Anchor Stool 22.6	6'11" x 1'11" x 1'11" 2.13m x 0.6m x 0.6m	997 lbs 452 kg
Upper Slewing Ring w/ Drive Assemblies	9'10" x 8'3" x 7'10" 3.0m x 2.51m x 2.4m	10,803 lbs 4,900 kg
Lower Slewing Ring	9'10" x 8'3" x 7'10" 3.0m x 2.51m x 2.4m	10,141 lbs 4,600 kg
Panoramic Cab	4'11" x 6'11" x 5'11" 1.5m x 2.12m x 1.8m	1,300 lbs 590 kg
Counterjib	19'2" x 7'5" x 2'5" 5.85m x 2.27m x 0.74m	3,748 lbs 1,700 kg
Hoisting Winch	7'6" x 7'10" x 7'3" 2.3m x 2.4m x 2.2m	14,705 lbs 6,670 kg
Luffing Winch	6'9" x 7'10" x 6'1" 2.06m x 2.4m x 1.85m	9,722 lbs 4,410 kg
A Frame	2'11" x 6'8" x 15'10" .9m x 2.03m x 4.84m	4,960 lbs 2,250 kg
A-Frame (bottom Part)	38'6" x 6'4" x 7'3" 11.74m x 1.94m x 2.2m	13,228 lbs 6,000 kg
Top climbing unit frontal panel	16'3" x 8'7" 4.96m x 2.62m	1,874 lbs 850 kg

DESCRIPTION	DIMENSION L x W x H	WEIGHT
Top climbing unit back panel	38'1" x 9'7" 11.61m x 2.92m	8,884 lbs 4030 kg
Top climbing unit side panel	37'8" x 8'7" 11.48m x 2.62m	4,090 lbs 1855 kg
Top climbing unit side panel	37'8" x 8'7" 11.48m x 2.62m	4,090 lbs 1855 kg
Jib Section ①	30'11" x 6'4" x 6'7" 9.42m x 1.92m x 2.01m	4,916 lbs 2,260 kg
Jib Section ②	33'10" x 6'2" x 5'10" 10.3m x 1.89m x 1.78m	2,756 lbs 1,250 kg
Jib Section ③	33'10" x 6'2" x 5'10" 10.3m x 1.89m x 1.78m	2,425 lbs 1,100 kg
Jib Section ④	33'10" x 6'2" x 5'10" 10.3m x 1.89m x 1.78m	2,425 lbs 1,100 kg
Jib Section ⑤	33'10" x 6'2" x 5'10" 10.3m x 1.89m x 1.78m	2,094 lbs 950 kg
Jib Section ⑥	38'7" x 6'2" x 5'10" 11.75m x 1.89m x 1.78m	4,079 lbs 1,850 kg
Jib Assembly for 197 ft (60 m) ①②③④⑤⑥	197' x 6'4" x 8'4" 60m x 1.92m x 2.55m	18,761 lbs 8,510 kg
Jib Assembly for 164 ft (50 m) ①②③④⑥	164' x 6'4" x 8'4" 50m x 1.92m x 2.55m	16,336 lbs 7,410 kg
Jib Assembly for 131 ft (40 m) ①②③⑥	131' x 6'4" x 8'4" 40m x 1.92m x 2.55m	14,242 lbs 6,460 kg
Jib Assembly for 98 ft (30 m) ①②⑥	98' x 6'4" x 8'4" 30m x 1.92m x 2.55m	11,817 lbs 5,360 kg

\* Inclusive of ladders, platforms and assembly equipment

\*\* Does not include Hoist Winch or Luffing Winch

NOTE: Weights and dimensions are approximate. Weigh components before lifting.

- 1 jib assembly doesn't include load block
- 2 Hoist/Luffing unit doesn't include wire rope, counterjib frame, or platforms
- 3 Long counterjib doesn't include hoist winch frame and tie bars
- 4 Turntable does not include cab, platforms and rails
- 5. Counterjib does not includes handrails, platforms, and leverages

# Radius and Capacities

## COMEDIL CTL-400

Radius and capacity (feet and pounds)		2-Part-Line												ft		
Hook	Radius	66	85	92	98	105	112	118	125	131	148	164	180	197		
		lbs														
197	26,455 lbs - 84 ft	26,455	26,103	24,229	22,553	21,077	19,797	18,629	17,615	16,689	14,727	13,162	11,861	10,805		
164	26,455 lbs - 108 ft	26,455	26,455	26,455	26,455	26,455	25,552	24,030	22,641	21,407	18,805	16,755				
131	26,455 lbs - 119 ft	26,455	26,455	26,455	26,455	26,455	26,455	26,455	25,199	23,920						
98	26,455 lbs - 98 ft	26,455	26,455	26,455	26,455											

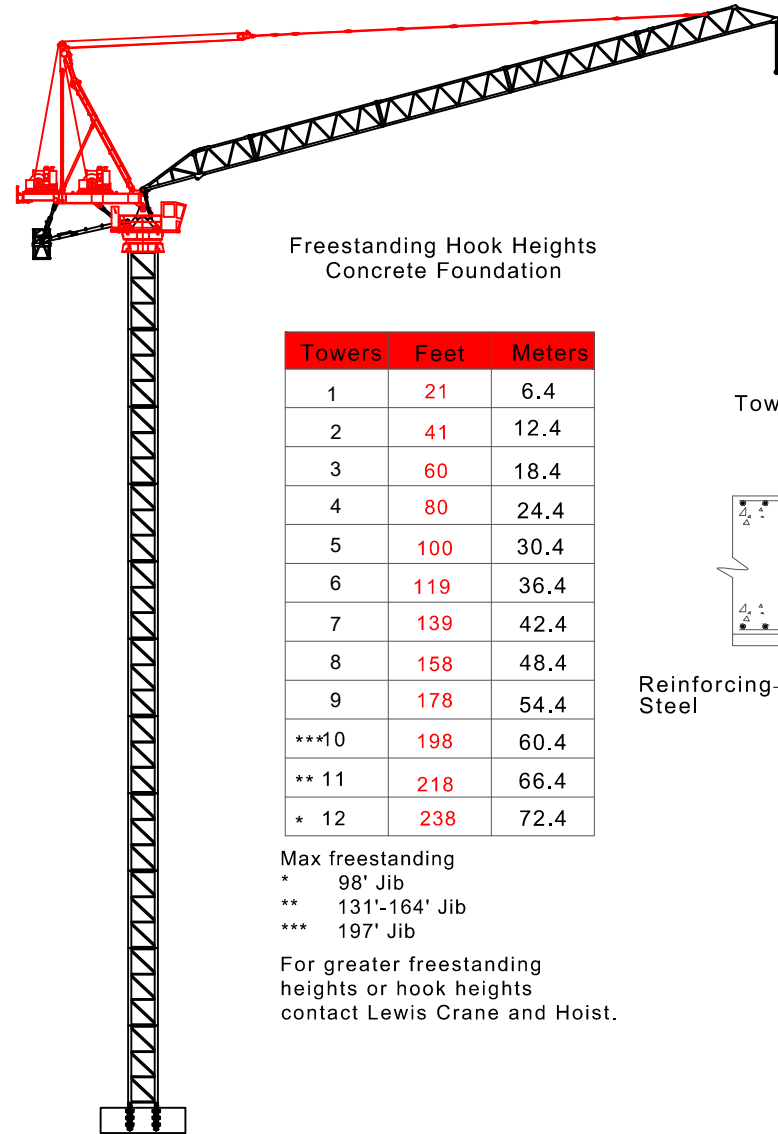
Radius and capacity (feet and pounds)		4-Part-Line												ft		
Hook	Radius	66	72	79	85	92	98	105	112	118	125	131	148	164		
		lbs														
164	39,683 lbs - 76 ft	39,683	39,683	38,052	35,031	32,452	30,203	28,241	26,500	24,978	23,589	22,355	19,731	17,635		
131	39,683 lbs - 83 ft	39,683	39,683	39,683	38,647	35,803	33,334	31,173	29,277	27,580	26,059	24,780				
98	39,683 lbs - 86 ft	39,683	39,683	39,683	39,683	36,927	34,480									

Radius and capacity (meters and tons)		2-Part-Line												m		
Hook	Radius	20	26	28	30	32	34	36	38	40	45	50	55	60		
		t														
60	12 t - 25.7 m	12	11.84	10.99	10.23	9.56	8.98	8.45	7.99	7.57	6.68	5.97	5.38	4.9		
50	12 t - 32.9 m	12	12	12	12	12	11.59	10.9	10.27	9.71	8.53	7.6				
40	12 t - 36.3 m	12	12	12	12	12	12	12	11.43	10.85						
30	12 t - 30 m	12	12	12	12											

Radius and capacity (meters and tons)		4-Part-Line												m		
Hook	Radius	20	22	24	26	28	30	32	34	36	38	40	45	50		
		t														
50	18 t - 23.1 m	18	18	17.26	15.89	14.72	13.7	12.81	12.02	11.33	10.7	10.14	8.95	8		
40	18 t - 25.3 m	18	18	18	17.53	16.24	15.12	14.14	13.28	12.51	11.82	11.24				
30	18 t - 26.1 m	18	18	18	18	16.75	15.64									

# Hook Heights / Freestanding

**COMEDIL CTL-400**

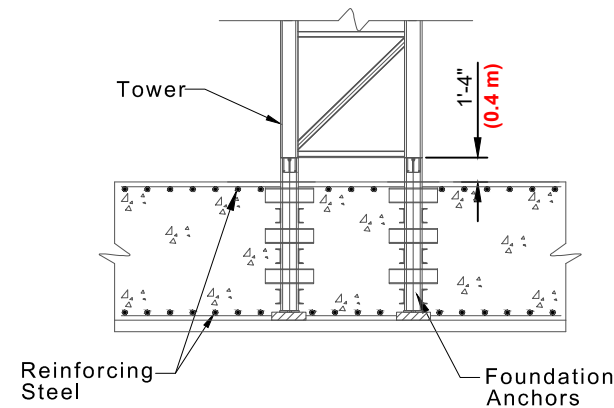


Freestanding Hook Heights  
Concrete Foundation

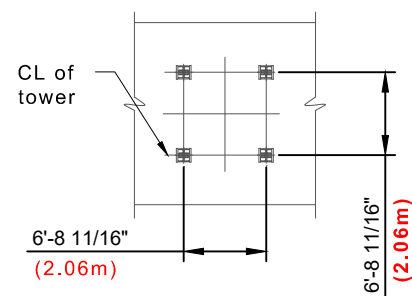
Towers	Feet	Meters
1	21	6.4
2	41	12.4
3	60	18.4
4	80	24.4
5	100	30.4
6	119	36.4
7	139	42.4
8	158	48.4
9	178	54.4
***10	198	60.4
** 11	218	66.4
* 12	238	72.4

Max freestanding  
 \* 98' Jib  
 \*\* 131'-164' Jib  
 \*\*\* 197' Jib

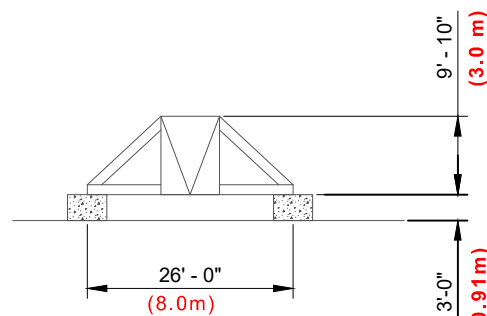
For greater freestanding heights or hook heights contact Lewis Crane and Hoist.



Elevation View of Anchors



Plan View of Anchors

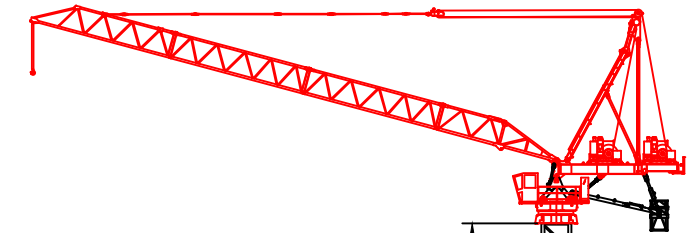


Elevation View of Undercarriage

- A = Height of complete slewing unit 6' - 7" - (2m)
- B = Height of cab tower section 11' - 10" - (3.61m)
- C = Height of jib section 8' - 2" - (2.5m)
- D = Height of Service Derrick 12' - 0" - (3.6m)

# Climbing / Tie - in Assembly

**COMEDIL CTL-400**



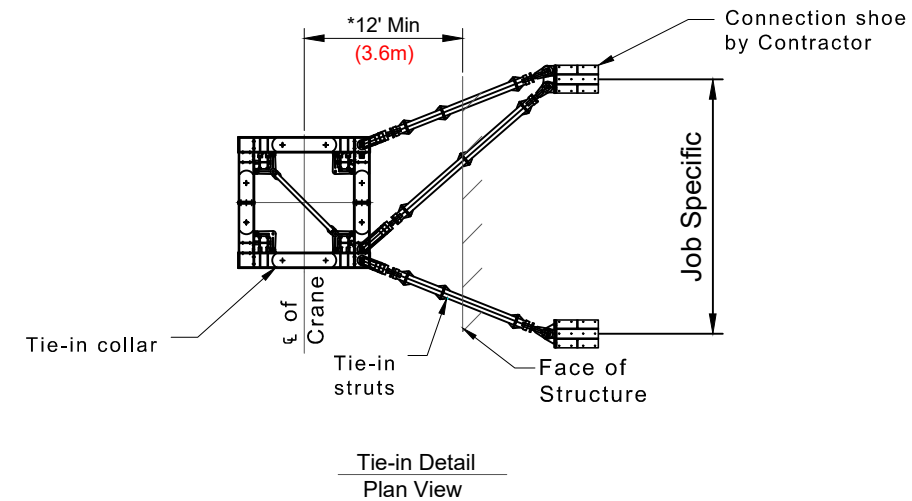
Jib Length (ft)	98	131	164	197
A Min/Max	98/216	98/216	98/197	98/177
B Min/Max	79/118	79/118	79/118	79/98
C Min/Max	112	98	98	85

NOTE:

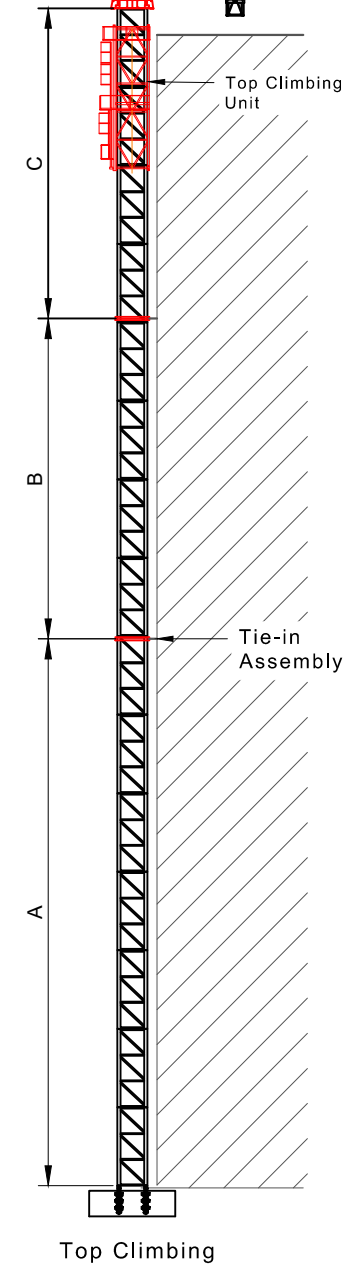
Tie-in installations may vary due to job site conditions. Contact Lewis Crane and Hoist for information regarding dimensions and reaction forces.

The jib must be parallel to the face of building when climbing.

\*Projects that require climbing the minimum distance we be decrease.



Tie-in Detail Plan View



Top Climbing