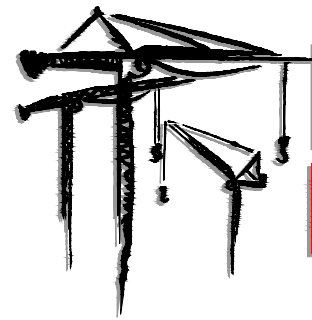


LEWIS
CRANE & HOIST

• **Tower Crane** • **Hoist** • **Mobile** •
Rentals and Sales

 **TEREX** | **COMEDIL**

COMEDIL CTT561
Tower Crane



LEWIS
CRANE & HOIST

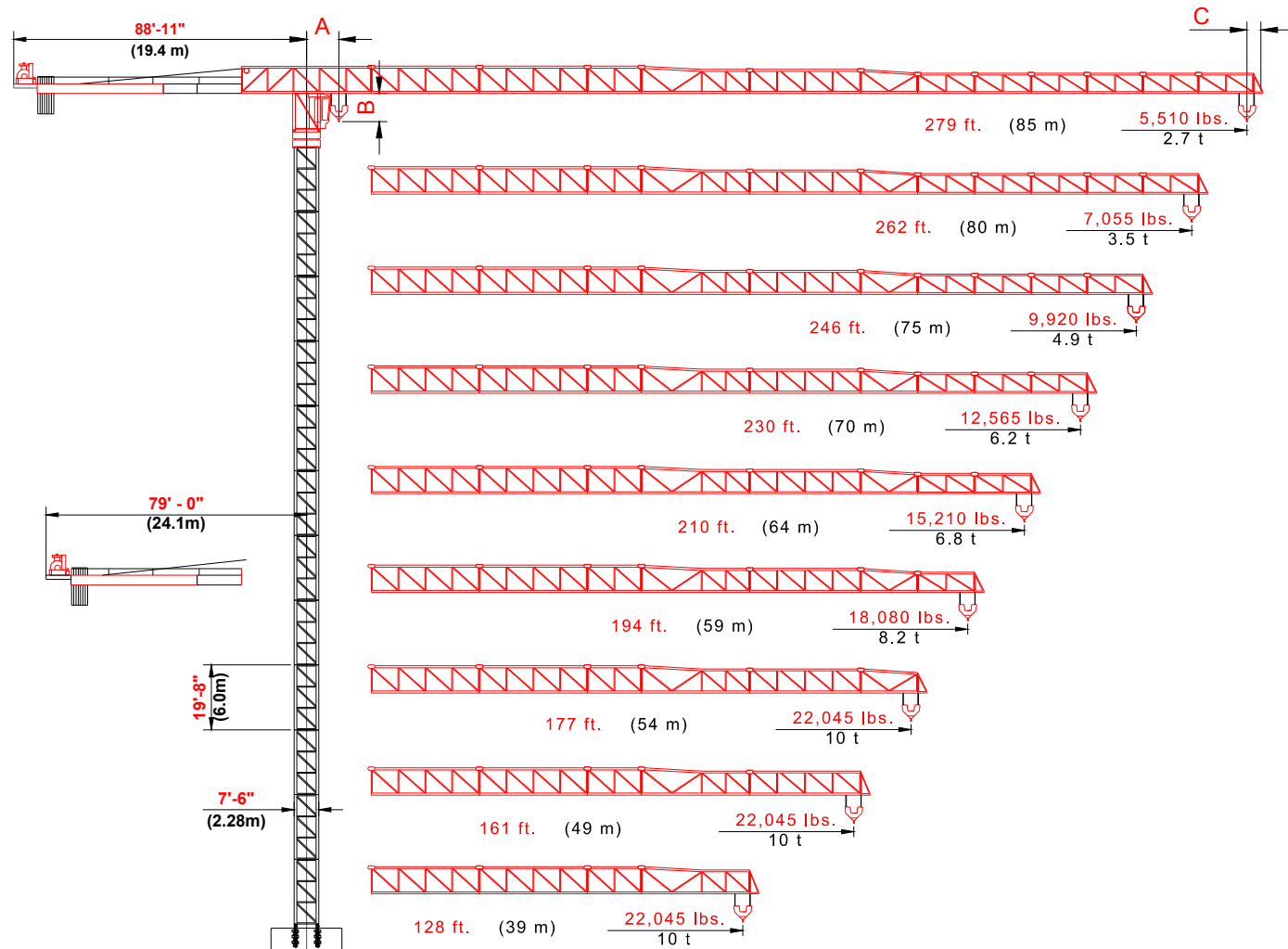
2214 HWY. 1187 BLDG. 1
Mansfield, TX 76063
817-225-1090

"Your Turnkey Crane and Hoist Provider"





Tower Crane



U.S. ton is the short ton which equates to 2000 pounds
 A = Centerline crane to minimum 2 part hook radius 7'-6" (2.3m)
 B = Bottom of Jib to block 7'-6" (2.3m)
 C = Add for jib tip 4'-11" (1.5m)

Line Speeds and Power Requirements

Hoist Unit
 90 hp 67 kW

2 - Part Line	Line Speed	Capacity
Gear 1	112 ft/min 34 m/min	22,050 lbs 10 t
Gear 2	135 ft/min 41 m/min	17,640 lbs 8 t
Gear 3	177 ft/min 54 m/min	13,230 lbs 6 t
Gear 4	253 ft/min 77 m/min	8,820 lbs 4 t
Gear 5	387 ft/min 118 m/min	5,292 lbs 2.4 t

4 - Part Line	Line Speed	Capacity
Gear 1	56 ft/min 17 m/min	44,100 lbs 20 t
Gear 2	67 ft/min 20.5 m/min	35,280 lbs 16 t
Gear 3	88.5 ft/min 27 m/min	26,460 lbs 12 t
Gear 4	126.5 ft/min 38.5 m/min	17,640 lbs 8 t
Gear 5	193 ft/min 59 m/min	10,584 lbs 4.8 t

Unit	Horsepower	Kilowatts	Speed
Trolley	14.7	11	0 - 328 ft/min 0 - 100 m/min
Swing	4 x 59 lbs. ft.	4 x 80 Nm	.73 rpm
Traveling	4 x 59 lbs.ft	4 x 80 Nm	39 - 79 ft/min 12 - 24 m/min

Power Requirements
 480 volts, 60 cycle, 3 phase: 300 amp service

Additional Equipment and Services Available

- Moritsch Tower Cranes
- Comedil Tower Cranes
- Peiner Tower Cranes
- Sun Tower Cranes
- Comansa Tower Cranes
- Timberland Derricks
- Hardrock Elevators
- Hercules Elevators
- Specialized Rigging
- Technical Services
- Third Party Inspections
- Parts and Repair Services
- Erection and Dismantlement Services

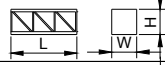
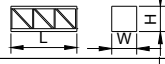
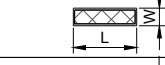
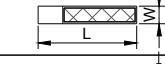
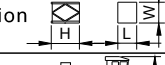
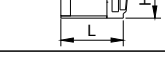

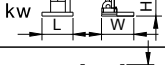
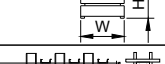


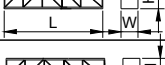
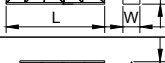
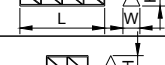
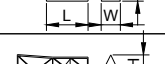

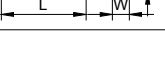
*Due to product improvement specifications are subject to change without notice.


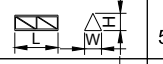
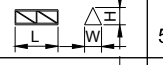
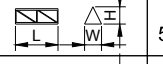
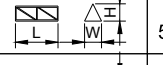
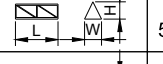
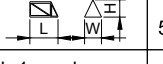
EQUIPMENT RENTALS - SALES- 24 HOUR SERVICE - YARD STORAGE & TRANSFERS - REGIONAL SERVICE

2214 FM 1187, SUITE 1
 MANSFIELD, TX 76063
 OFFICE: 817-225-1090 FAX: 817-225-1095

WWW.LEWISCRANEANDHOIST.COM

Crane Component List

DESCRIPTION	DIMENSION L x W x H	WEIGHT
HD23 26.6 * Tower Section 	19'-8" x 7'-8" x 7'-7" 6m x 2.32m x 2.32m	14,270 lbs 6473 kg
HD23 22.6 * Tower Section 	19'-8" x 7'-6" x 7'-6" 6m x 2.28m x 2.29m	10,635 lbs 4823 kg
Counterjib "1C" 	13'-7" x 6'-6" x 2'-11" 5.16m x 1.95m x 0.88m	3,660 lbs 2110 kg
Counterjib "3C" 	38'-3" x 6'-11" x 3'-7" 11.66m x 2.12m x 1.1m	12,260 lbs 5560 kg
Cab Tower Section 	6'-10" x 8'-2" x 10'-0" 2.09m x 2.5m x 3.0m	5,744 lbs 2605 kg
Cabin Support Platform 	17'-11" x 6'-2" x 8'-10" 5.45m x 1.87m x 2.69m	4,410 lbs 2000 kg
Top Climing Unit Complete 	10'-10" x 6'-12" x 7'-9" 3.3m x 2.13m x 2.37m	31,973 lbs 14500 kg
Hoisting Unit 67 kw 	10'-10" x 6'-12" x 7'-9" 3.3m x 2.13m x 2.37m	15,986 lbs 7250 kg
Complete HD23 Slewing Unit 	9'-9" x 7'-7" x 7'-4" 2.96m x 2.32m x 2.24m	25,358 lbs 11500 kg
26.6 Foundation Anchors x4 	8'-4" x 2'-7" x 2'-7" 2.55m x .80m x .80m	827 lbs 1824 kg
22.6 Foundation Anchors x4 	6'-11" x 1'-11" x 1'-11" 2.13m x .60m x .60m	997 lbs 452 kg
Jib Section - 1 	39'-4" x 6'-11" x 8'-6" 12m x 2.12m x 2.60m	19,845 lbs 9000 kg
Jib Section - 2 	32'-10" x 6'-2" x 8'-2" 10.00m x 1.87m x 2.50m	9,692 lbs 4350 kg
Jib Section - 3 	32'-10" x 6'-2" x 8'-2" 10.00m x 1.87m x 2.5m	8,820 lbs 3815 kg
Jib Section - 4 	16'-5" x 6'-2" x 8'-2" 5m x 1.87m x 2.5m	3,903 lbs 1770 kg
Jib Section - 5 	32'-10" x 6'-2" x 8'-2" 10m x 1.87m x 2.5m	5,954 lbs 2700 kg
Jib Section - 6 	33'-9" x 6'-2" x 7'-2" 10.29m x 1.87m x 2.18m	4,256 lbs 1930 kg

DESCRIPTION	DIMENSION L x W x H	WEIGHT
Jib Section - 7 	17'-4" x 6'-2" x 7'-2" 5.28m x 1.87m x 2.18m	1,985 lbs 900 kg
Jib Section - 8 	17'-3" x 6'-2" x 6'-1" 5.25m x 1.87m x 1.86m	1,720 lbs 780 kg
Jib Section - 9 	17'-2" x 6'-2" x 6'-1" 5.22m x 1.87m x 1.86m	2,073 lbs 940 kg
Jib Section - 10 	17'-0" x 6'-2" x 6'-1" 5.19m x 1.87m x 1.86m	1,150 lbs 520 kg
Jib Section - 11 	16'-11" x 6'-2" x 6'-1" 5.16m x 1.87m x 1.86m	997 lbs 452 kg
Jib Section - 12 	16'-11" x 6'-2" x 5'-10" 5.16m x 1.87m x 1.77m	840 lbs 380 kg
Jib Section - 13 	16'-10" x 6'-2" x 6'-1" 5.10m x 1.87m x 1.77m	717 lbs 325 kg
Jib Assembly-Part 1 Jib 1 used for all Jib Assemblies	67'-8" x 6'-2" x 8'-4" 20.63m x 1.87m x 2.54m	19,845 lbs 9001 kg
Jib Assembly-Part 2 from 2 to 13 + jib tip for 279 ft (85 m) jib	198'-3" x 6'-2" x 8'-2" 60.42m x 1.87m x 2.5m	42,084 lbs 19,089 kg
Jib Assembly-Part 2 from 2 to 12 + jib tip for 262 ft (80 m) jib	181'-10" x 6'-2" x 8'-2" 55.43m x 1.87m x 2.5m	41,599 lbs 18,869 kg
Jib Assembly-Part 2 from 2 to 11 + jib tip for 246 ft (75 m) jib	165'-6" x 6'-2" x 8'-2" 50.45m x 1.87m x 2.5m	40,882 lbs 18,544 kg
Jib Assembly-Part 2 from 2 to 10 + jib tip for 230 ft (70 m) jib	149'-0" x 6'-2" x 8'-2" 45.46m x 1.87m x 2.50m	39,045 lbs 17,711 kg
Jib Assembly-Part 2 from 2 to 9 + jib tip for 213 ft (65 m) jib	132'-9" x 6'-2" x 8'-2" 40.47m x 1.87m x 2.5m	37,895 lbs 17,189 kg
Jib Assembly-Part 2 from 2 to 8 + jib tip for 197 ft (60 m) jib	116'-4" x 6'-2" x 8'-2" 35.47m x 1.87m x 2.5m	36,175 lbs 16,409 kg
Jib Assembly-Part 2 from 2 to 7 + jib tip for 180 ft (55 m) jib	100'-1" x 6'-2" x 8'-2" 30.5m x 1.87m x 2.5m	34,190 lbs 15,508 kg
Jib Assembly-Part 2 from 2 to 6 + jib tip for 164 ft (50 m) jib	83'-7" x 6'-2" x 8'-2" 25.47m x 1.87m x 2.5m	32,117 lbs 14,568 kg
Jib Assembly-Part 2 from 2 to 5 + jib tip for 131 ft (40 m) jib	50'-9" x 6'-2" x 8'-2" 15.48m x 1.87m x 2.5m	28,214 lbs 12,798 kg

NOTE: Weights and dimensions are approximate. Please weigh components before lifting.

Turntable upper weight (slewing ring incl.)	5300 kg/11,690 lbs
Turntable lower weight (slewing ring incl.)	6700 kg/14,770 lbs
Top climbing unit total weight (all included)	16000 kg/35,300 lbs
Double hook block	1230 kg/2,700 lbs
Double trolley	900 kg/1,980 lbs
Counterweight A2 type	3570 kg/7,850 lbs
Counterweight C2 type	2500 kg/5,500 lbs
Counterjib long tie bar set	2100 kg/ 4,620 lbs

- Jib assembly doesn't include trolley and load block
- Hoist unit doesn't include wire rope, counterjib frame or platform
- Long counterjib doesn't include hoist winch frame and tie bars
- Operator cabin doesn't include platform (400 kg/880 lbs)
- Turntable complete doesn't include platform and operating cabin
- Counterjib includes handrails and platforms
- Cabin tower includes platform and ladder.

Radius and Capacities

Radius and capacity (feet and pounds)		2-Part-Line											ft	
Hook	Radius	82	98	115	131	148	164	180	197	213	230	246	262	279
279 ft	22,045 lbs - 91 ft	22,045	20,020	17,655	14,330	12,455	10,980	9,765	8,750	7,890	7,165	6,550	5,595	5,510
262 ft	22,045 lbs - 110 ft	22,045	22,045	20,990	18,035	15,785	13,975	12,500	11,290	10,520	9,370	8,600	7,935	
246 ft	22,045 lbs - 130 ft	22,045	22,045	22,045	21,805	19,115	16,955	15,210	13,755	12,545	11,485	10,580		
230 ft	22,045 lbs - 150 ft	22,045	22,045	22,045	22,045	22,045	19,930	17,945	16,270	14,860	13,670			
213 ft	22,045 lbs - 161 ft	22,045	22,045	22,045	22,045	22,045	21,540	19,380	17,590	16,095				
197 ft	22,045 lbs - 174 ft	22,045	22,045	22,045	22,045	22,045	22,045	21,120	19,180					
180 ft	22,045 lbs - 180 ft	22,045	22,045	22,045	22,045	22,045	22,045	22,045						
164 ft	22,045 lbs - 164 ft	22,045	22,045	22,045	22,045	22,045								
131 ft	22,045 lbs - 131 ft	22,045	22,045	22,045	22,045									

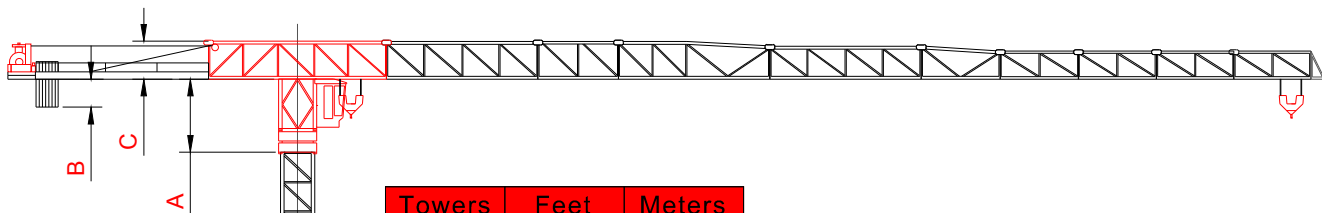
Radius and capacity (feet and pounds)		4-Part-Line											ft	
Hook	Radius	82	98	115	131	148	164	180	197	213	230	246	262	279
279 ft	44,090 lbs - 47 ft	22,490	17,900	14,640	12,240	10,360	8,890	7,670	6,660	5,820	5,090	4,480	3,920	3,530
262 ft	44,090 lbs - 56 ft	28,510	22,930	19,000	16,090	13,850	12,040	10,580	9,370	8,330	7,470	6,700	6,170	
246 ft	44,090 lbs - 67 ft	35,140	28,440	23,700	20,190	17,460	15,300	13,540	12,080	10,850	9,790	9,040		
230 ft	44,090 lbs - 77 ft	41,050	33,400	28,000	23,990	20,880	18,410	16,400	14,730	13,320	12,350			
213 ft	44,090 lbs - 82 ft	44,090	35,960	30,180	25,900	22,580	19,930	17,790	16,010	14,770				
197 ft	44,090 lbs - 88 ft	44,090	39,020	32,870	28,290	24,740	21,910	19,620	18,080					
180 ft	44,090 lbs - 99 ft	44,090	44,090	37,350	32,190	28,200	25,040	22,930						
164 ft	44,090 lbs - 102 ft	44,090	44,090	38,540	33,220	29,120	26,460							
131 ft	44,090 lbs - 105 ft	44,090	44,090	39,770	35,270									

Radius and capacity (meters and tons)		2-Part-Line											m	
Hook	Radius	25	30	35	40	45	50	55	60	65	70	75	80	85
85 m	10 t - 27.6 m	10.0	9.08	7.6	6.5	5.65	4.98	4.43	3.97	3.58	3.25	2.97	2.72	2.5
80 m	10 t - 33.5 m	10.0	10.0	9.52	8.18	7.16	6.34	5.67	5.12	4.65	4.25	3.9	3.6	
75 m	10 t - 39.6 m	10.0	10.0	10.0	9.89	8.67	7.69	6.9	6.24	5.69	5.21	4.8		
70 m	10 t - 45.7 m	10.0	10.0	10.0	10.0	10.0	9.04	7.14	7.38	6.74	6.2			
65 m	10 t - 49.0 m	10.0	10.0	10.0	10.0	10.0	9.77	8.79	7.98	7.3				
60 m	10 t - 52.9 m	10.0	10.0	10.0	10.0	10.0	10.0	9.58	8.7					
55 m	10 t - 55.0 m	10.0	10.0	10.0	10.0	10.0	10.0	10.0						
50 m	10 t - 50.0 m	10.0	10.0	10.0	10.0	10.0	10.0							
40 m	10 t - 40.0 m	10.0	10.0	10.0	10.0									

Radius and capacity (meters and tons)		4-Part-Line											m	
Hook	Radius	25	30	35	40	45	50	55	60	65	70	75	80	85
85 m	20 t - 14.3 m	10.2	8.12	6.64	5.55	4.7	4.03	3.48	3.02	2.64	2.31	2.31	1.78	1.6
80 m	20 t - 17.2 m	12.93	10.4	8.62	7.3	6.28	5.46	4.8	4.25	3.78	3.39	3.04	2.8	
75 m	20 t - 20.5 m	15.94	12.9	10.75	9.16	7.92	6.94	6.14	5.85	4.92	4.44	4.1		
70 m	20 t - 23.5 m	18.62	15.15	12.7	10.88	9.47	8.35	7.44	6.68	6.04	5.6			
65 m	20 t - 25.0 m	20.0	16.31	13.69	11.75	10.24	9.04	8.07	7.26	6.7				
60 m	20 t - 26.9 m	20.0	17.7	14.91	12.83	11.22	9.94	8.9	8.2					
55 m	20 t - 30.1 m	20.0	20.0	16.94	14.6	12.79	11.36	10.4						
50 m	20 t - 31.0 m	20.0	20.0	17.48	15.07	13.21	12.0							
40 m	20 t - 31.9 m	20.0	20.0	18.04	16.0									

Hook Heights / Freestanding

Climbing / Tie - in Assembly



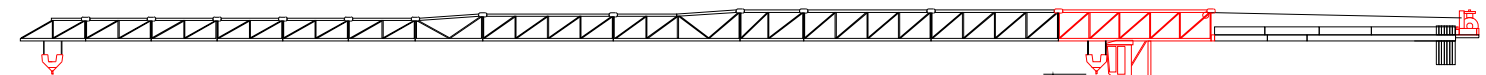
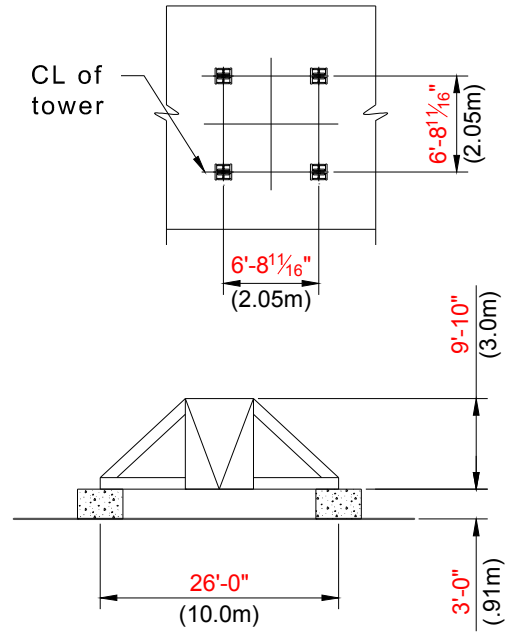
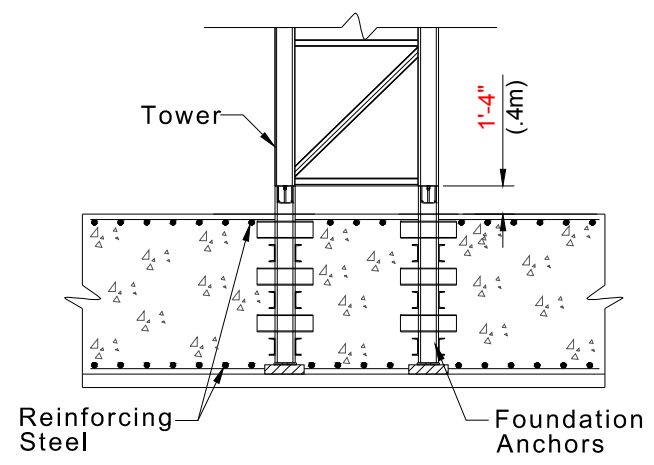
Towers	Feet	Meters
1	23	7.2
2	43	13.2
3	63	19.2
4	83	25.2
5	102	31.2
6	122	37.2
7	142	43.2
8	161	49.2
9	181	55.2
10	201	61.2
11	220	67.2
*12	240	73.2
*13	259	79.2
*14	279	85.2

For greater freestanding heights or hook heights for static or traveling undercarriage contact Lewis Crane and Hoist.

* Big Tower used to accomplish heights

NOTE:
Hook heights may be limited by geographic location

- A = Height of complete slewing unit 7'-7" (2.3m)
- B = Height of cab tower section 10'-0" (3.05m)
- C = Height of jib section 8'-2" (2.5m)
- D = Height of service deck 12'-0" (2.6m)



NOTE:

1. Lower or remove top climbing unit prior to operating the crane.
2. If hook height exceeds 330 ft (100m) the number of tower sections above the upper most tie-in location must be reduced by one section.

NOTE:

Tie-in installations may vary due to job site conditions. Contact Sun Crane and Hoist for information regarding dimensions and reaction forces.

The jib must be parallel to the face of building when climbing.

